



New Hampshire Fish and Game Department



NEW HAMPSHIRE

# FRESHWATER FISHING

2021 DIGEST

Jan. 1–Dec. 31, 2021



*Go Fish*  
**New Hampshire!**

Nearly 1,000 fishable lakes and  
12,000 miles of rivers and streams...

**The Official New Hampshire  
Digest of Regulations**

[fishnh.com](http://fishnh.com)



# Irwin Marine

Celebrating 100 Years



## Why Smoker Craft?

It takes a true fisherman to know what makes a better fishing experience. That's why we're constantly taking things to the next level with design, engineering and construction that deliver best-in-class aluminum fishing boats for every budget.

**SMOKER**  
CRAFT



### \\Pro Angler:

#### Grab Your Friends and Head for the Water

More boat for your bucks. The Smoker Craft Pro Angler aluminum fishing boat series leads the way with feature-packed value.

### \\Voyager:

#### Years of Worry-Free Reliability

The Voyager is perfect for the no-nonsense angler. This spacious and deep boat is perfect for the first time boat buyer or a seasoned veteran who is looking for a solid utility boat.

#### Laconia

958 Union Ave., PO Box 6145,  
Laconia, NH 03246

603-524-6661

#### Alton Bay

396 Main Street  
Alton Bay, NH 03810

603-875-8848

#### Hudson

261 Derry Road Route 102  
Hudson, NH 03051

603-595-7995

**Irwin Marine**  
Celebrating 100 Years



[www.irwinmarine.com](http://www.irwinmarine.com)



# FRESHWATER FISHING

2021 DIGEST



## Lakes and Rivers Galore

I am new to Fish and Game, but I was born and raised in New Hampshire and have spent a lifetime working in the outdoors of our Granite State. I grew up with my friends ice fishing for lake trout and cusk on the hard waters of Lake Winnepesaukee and Lake Winnisquam with my father and his friends. Or we would be off with another father to catch bass or pickerel through the ice on a local pond. When school let out and summer started, my friends and I would spend our nights catching hornpout for breakfast. Today our youth have many

more ways to spend their time, but there is no replacement for some good quality time spent fishing as a family. And don't forget to involve your children's friends too.

We are very fortunate to live in such a beautiful state that includes nearly 1,000 fishable lakes and 12,000 miles of rivers and streams. Popular coldwater species include brook, brown, and rainbow trout, lake trout, and landlocked salmon. For those who prefer warm water, New Hampshire offers small- and largemouth bass, pickerel, black crappie, bluegill, and yellow perch among others. Whether you are an expert or a novice, fish from a boat or from shore, or enjoy casting or fly fishing, there is truly something for everyone when it comes to angling in the Granite State.

Whether you're a seasoned angler, a lapsed fisherman, or someone who has thought about fishing but haven't yet, why not make this the year to try something new? Take the kids fishing and pass the sport on to a new generation—children under 16 fish for free. Don't forget our free fishing days on January 16 and June 5 in 2021, when anglers do not need a license to try fishing.

Our hatchery staff stock over a million trout as well as landlocked salmon for your fishing enjoyment each year. The healthy fisheries we have today are the result of conservation efforts here at Fish and Game dating back to 1865, when the State Legislature established the Commission on Fisheries to reverse the trend of rapidly depleted species around the state. Because of careful management from raising and stocking fish to stream restoration and watershed conservation to population testing and assessment, fishing opportunities abound.

Also thanks to our Public Boat Access Program, guided by the Public Water Access Advisory Board, or PWAAB, there are more than 140 Fish and Game boat launch sites around the state. Construction and maintenance of these facilities is supported in part by the federal Sport Fish Restoration Program.

So get outside, be safe, and happy fishing!

Scott R. Mason  
Executive Director  
N.H. Fish and Game Department

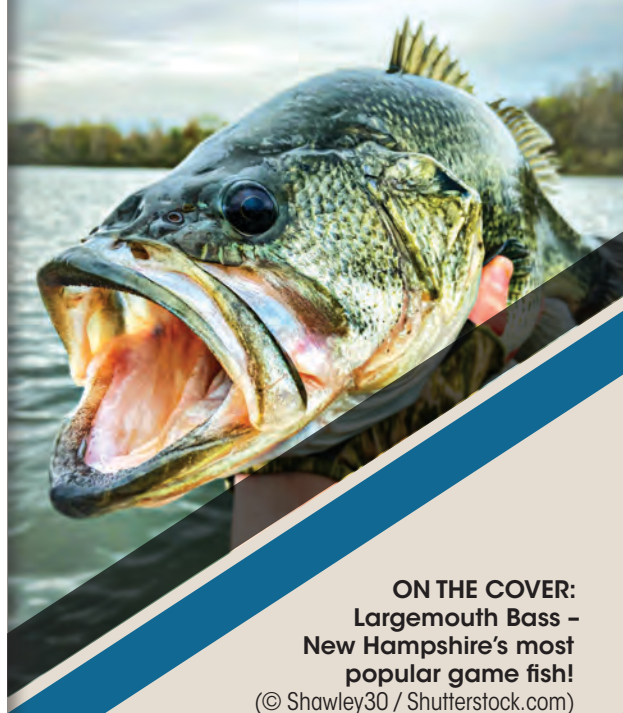


## N.H. Fish and Game — Our Mission

As the guardian of the state's fish, wildlife and marine resources, the New Hampshire Fish and Game Department works in partnership with the public to:

- Conserve, manage and protect these resources and their habitats;
- Inform and educate the public about these resources; and
- Provide the public with opportunities to use and appreciate these resources.

The N.H. Fish and Game Department receives Federal Assistance from the US Fish & Wildlife Service, and thus prohibits discrimination on the basis of race, color, national origin, disability, age and sex, pursuant to Title VI of the Civil Rights Act of 1964, Section 504 of the Rehabilitation Act of 1973, Title II of the Americans with Disabilities Act of 1990, Title IX of the Education Amendments of 1972, and the Age Discrimination Act of 1975. If you believe you have been discriminated against in any program, activity or service, please contact or write the US Fish & Wildlife Service, Division of Wildlife and Sport Fish Restoration, 4001 N. Fairfax Drive, Mail Stop: WSFR – 4020, Arlington, Virginia 22203, Attention: Civil Rights Coordinator for Public Programs.



**ON THE COVER:**  
**Largemouth Bass –**  
**New Hampshire's most**  
**popular game fish!**  
(© Shawley30 / Shutterstock.com)

# CONTENTS

- 2 Contact Information
- 5 Wildlife Heritage Foundation of N.H.
- 6 License Information
- 7 License Fees and Requirements
- 8 Definitions
- 10 Important Laws and Rules
- 12 **Rules for Lakes and Ponds**
- 21 Reel Fun: Go Fish with the Kids!
- 22 **Rules for Rivers and Streams**
- 26 Inland Fisheries Division – What We Do
- 27 N.H. Record and Trophy Fish
- 28 Boating in N.H.
- 30 Ice Fishing
- 32 Your Fisheries Habitat Fee
- 33 Freshwater Smelt Rules
- 34 Fish Identification
- 36 Stop Aquatic Hitchhikers
- 37 Bait Fish Information
- 38 Interstate Waters: ME, VT, MA
- 40 Fish Consumption Guidelines
- 41 Sunrise/Sunset Tables

# FRESHWATER FISHING

## 2021 DIGEST

### State of New Hampshire

Christopher T. Sununu, Governor

Scott R. Mason, Executive Director

New Hampshire Fish and Game Department

11 Hazen Drive • Concord, New Hampshire 03301



### Law Enforcement Districts

#### District 1

Region 1, 629B Main St.

Lancaster, NH 03584

(603) 788-3164

Lt. Mark W. Ober

#### District 2

Region 2, Box 417

New Hampton, NH 03256

(603) 744-5470

Lt. Bradley R. Morse

#### District 3

Region 2, Box 417

New Hampton, NH 03256

(603) 744-5470

Lt. James E. Kneeland

#### District 4

Region 4, 15 Ash Brook Court

Keene, NH 03431

(603) 352-9669

Lt. William J. Boudreau

#### District 5

Fish and Game HQ

11 Hazen Drive

Concord, NH 03301

(603) 271-3361

Lt. Adam P. Cheney

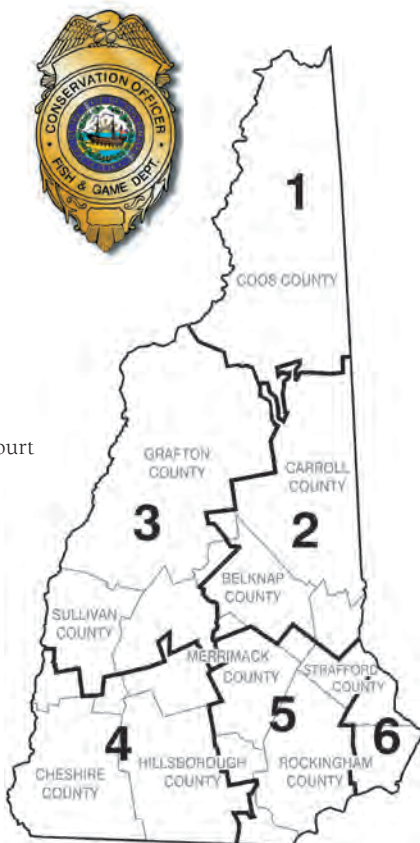
#### District 6

Region 3, 225 Main St.

Durham, NH 03824-4732

(603) 868-1095

Lt. Delayne Brown



### Fish and Game Commissioners

The numbers on this page are the home phone numbers of Fish and Game Commissioners. Please use discretion with the timing of your calls. For emergency calls after hours, contact N.H. State Police or your local police. For questions about N.H. fishing laws, call (603) 271-3127.

#### Belknap County

Marc Lachance

(603) 722-0509

#### Carroll County

David L. Patch

Vice Chair

(603) 387-3771

#### Cheshire County

John Caveney

(802) 254-1535

#### Coastal

Paul G. McInnis

(603) 770-6677

#### Coos County

Eric G. Stohl

Chair

(603) 237-4206

#### Grafton County

Paul W. DeBow

(603) 481-2479

#### Hillsborough County

Ray Green

Secretary/Treasurer

(603) 396-2493

#### Merrimack County

Christopher Hodgdon

(603) 746-1000

#### Rockingham County

Christina Luppi

(603) 957-8524

#### Strafford County

Frederick T. Bird

(603) 289-7745

#### Sullivan County

Bruce Temple

(603) 543-0519

### N.H. Fish & Game Telephone Numbers

#### Law Enforcement

Dispatch..... (603) 271-3361

Regular Hours: 8 a.m.–5 p.m., Mon.–Fri. ; 7 a.m.–6 p.m., Sat. & Sun.

Sept. 1 to end of firearms season: Seven days a week, 7 a.m.–6 p.m.

Questions about New Hampshire Fishing Laws..... (603) 271-3127

#### To Report Violations 24 Hours A Day

Operation Game Thief..... 1-800-344-4262

or [wildnh.com/ogt](http://wildnh.com/ogt)

Off-Highway Recreational Vehicle (laws/education)..... (603) 271-3129

#### N.H. Fish and Game

Headquarters/License Office..... (603) 271-3421

Regular Hours: 8 a.m.–4 p.m., Mon.–Fri.

Executive Director's Office..... (603) 271-3511

Inland Fisheries..... (603) 271-2501

License Agent Accounting/OHRV Registry..... (603) 271-2743

Marine Fisheries..... (603) 868-1095

Nuisance Wildlife Questions..... (603) 223-6832

Public Boat Access Program..... (603) 271-1748

Public Affairs..... (603) 271-3211

Wildlife Programs..... (603) 271-2461

#### Regional Offices

Region 1: Lancaster..... (603) 788-3164

Region 2: New Hampton..... (603) 744-5470

Region 3: Durham..... (603) 868-1095

Region 4: Keene..... (603) 352-9669

### About This Publication

This publication is a summary of fishing regulations. It is not the full laws or rules. It is intended only as a guide to inform the angler of seasons and other necessary information.

For more detailed information concerning regulations, consult the New Hampshire Fish and Game Law Book, Fish and Game Administrative Rules, or contact your local Conservation Officer. Fish and Game laws and rules may be viewed at any Fish and Game office (contact information on this page); Legislative Services, Administrative Rules, in the State House Annex, 25 Capitol St., Room 219, Concord, NH 03301; and at [fishnh.com](http://fishnh.com) or [nh.gov](http://nh.gov). A compendium of Fish and Game laws may also be purchased at Department headquarters in Concord for \$41.

This publication is partially paid for through the sale of advertising. The New Hampshire Fish and Game Department neither endorses products or services listed or claims made nor accepts any liability arising from the use of products or services listed.

© 2021 N.H. Fish and Game Department. All rights reserved.



Find us on  
**Facebook**

[facebook.com/nhfishandgame](https://facebook.com/nhfishandgame)

**This digest, with enlarged type,  
is available for the visually impaired.**

**Call (603) 271-3211 or  
email [information@wildlife.nh.gov](mailto:information@wildlife.nh.gov)**





**YOUR  
ENJOYMENT  
MADE EASY**

**GEICO<sup>®</sup>**  
**FOR YOUR BOAT**

Get a GEICO quote for your boat and, in just 15 minutes, you'll know how much you could be saving. If you like what you hear, you can buy your policy right on the spot. Then let us do the rest while you enjoy your free time with peace of mind.

**geico.com/boat | 1-800-865-4846**

Some discounts, coverages, payment plans, and features are not available in all states, in all GEICO companies, or in all situations. Boat and PWC coverages are underwritten by GEICO Marine Insurance Company. In the state of CA, program provided through Boat Association Insurance Services, license #0H87086. GEICO is a registered service mark of Government Employees Insurance Company, Washington, DC 20076; a Berkshire Hathaway Inc. subsidiary. © 2020 GEICO



New Hampshire  
**WILDLIFE JOURNAL**  
Subscribe today!  
**40% OFF** COVER PRICE  
WITH A 2-YEAR SUBSCRIPTION




The brooks that contain wild trout are often quite modest and can be easily fished while wearing an old pair of sneakers...

**nhwildlifejournal.com**





## 2021 Free Fishing Days

Saturday, January 16

Saturday, June 5

- Freshwater or saltwater fishing by angling only
  - Resident or nonresident
  - NO LICENSE REQUIRED\*
  - All other regulations apply
- \* Anglers participating in fishing tournaments on Free Fishing Days must have a license.

## Did You Know?

While designated Trout Ponds are closed from October 16 to the fourth Saturday in April, many ponds and lakes remain open for trout fishing year round. Learn more at [www.fishnh.com/fishing/trout-year-round.html](http://www.fishnh.com/fishing/trout-year-round.html)



Williamstown, MA | Birmingham, AL

## About This Guide

This high-quality guide is offered to you by the N.H. Fish and Game Department through its unique partnership with J.F. Griffin Publishing, LLC.

The revenue generated through ad sales significantly lowers production costs and generates savings. These savings translate into additional funds for other important agency programs.

If you have any feedback or are interested in advertising, please contact us at 413.884.1001 or at [www.JFGriffin.com](http://www.JFGriffin.com)

### Graphic Design:

Jon Gulley, Dane Fay, John Corey, Evelyn Haddad, Chris Sobolowski



This guide is also available online at

**eRegulations.com**



# WILDLIFE HERITAGE FOUNDATION OF NEW HAMPSHIRE

The Wildlife Heritage Foundation of New Hampshire is the official non-profit partner of the New Hampshire Fish and Game Department. The foundation raises money and works with wildlife professionals and conservation education partners to fund Fish and Game's conservation of wildlife and natural places important to New Hampshire family traditions such as fishing, hiking, hunting, and wildlife watching.

In recent years, the foundation has supported a wide range of projects, including aerial stocking of trout into remote ponds, monitoring river herring passage on the Lamprey River, kiosks for the Connecticut Lakes Natural Area, Fish and Game's Landowner Relations Program, Conservation Canine search and rescue dogs, publication of *Wild Times for Kids*, and improvements at Owl Brook Hunter Education Center and Barry Conservation Camp.

Funding for the Wildlife Heritage Foundation's grants program comes from individual and corporate donors and from the annual auction of fish and game permits and licenses. The foundation accepts general and targeted cash donations, as well as planned gifts and tangible assets; most contributions are tax-deductible.

To learn more about the foundation or make an online donation, visit [nhwildlifeheritage.org](http://nhwildlifeheritage.org) or contact [admin@nhwildlifeheritage.org](mailto:admin@nhwildlifeheritage.org) or (603) 496-2778. Thanks for your support!



WILDLIFE HERITAGE  
FOUNDATION of NH

SHARING THE PAST, SHAPING THE FUTURE.



## Wildlife Legacy Initiative

### Supporting Fish and Game's Landowner Relations Program

If you love New Hampshire's fish, wildlife, and wild places, give a little extra this year when you buy your fishing or hunting license or make a donation. Support the **Wildlife Legacy Initiative** and help the New Hampshire Fish and Game Department's Landowner Relations Program, working to keep New Hampshire open to all outdoor users by protecting access to private land.

When you contribute to the **Wildlife Legacy Initiative**, be assured that 100% of your donation goes to support an important New Hampshire effort. The Landowner Relations Program actively encourages local landowners and hunters, anglers and wildlife watchers to maintain access to open lands and helps to address issues and concerns landowners face in providing this access on their property. Learn more at [wildnh.com/landshare](http://wildnh.com/landshare).

You can donate when you buy your license — in person or online at [wildnh.com](http://wildnh.com). Just check off the \$10 Wildlife Legacy Donation...and thank you!

## LET'S GO FISHING!



All your fishing needs, line winding service, rod and reel repair. Outstanding customer service!





1.603.332.3270 [Coyote-Creek-Outfitters.com](http://Coyote-Creek-Outfitters.com)  
Exit 15 off the Spaulding Turnpike (Rte 11)  
22 Farmington Road | Rochester, NH | 03867

## MAKE SAFETY A PRIORITY

Visit [safewaters.com](http://safewaters.com) for facility information

**WEAR IT****WEAR IT**



**Brookfield**  
Renewable U.S.



# LICENSE INFORMATION

Fishing licenses are required for people 16 years of age and older. Review page 7 for license information.

## How to Use This Book

1. Review *License Information* on pages 6–7; *Definitions* on pages 8–9; *Important Laws and Rules*, including *Unlawful Actions* on pages 10–11; and *Ice Fishing Rules* on page 31.
2. If you want to fish a lake or pond, check to see if it is listed in *Lakes & Ponds with Special Rules* (pages 14–20).
  - » If it is listed, make note of any restrictions, seasons, bag limits, methods or additional special rules shown. For those lakes and ponds listed as Trout Ponds, Fly-fishing only, Wild Trout, or Lake Trout and/or Salmon waters, refer to *Lakes & Ponds: Special Rules* on page 12.
  - » If the lake or pond is **not** listed on pages 14–20, follow *Lakes & Ponds: General Rules* (page 13), including seasons, bag limits, etc., as shown.
3. If you want to fish a river or stream, check to see if it is listed in *Rivers & Streams with Special Rules* (pages 23–25).
  - » If it is listed, make note of any restrictions, seasons, bag limits, methods or additional special rules shown for the specified section.
  - » If the river or stream is **not** listed on pages 23–25, follow *Rivers & Streams: General Rules* (page 22), including seasons, bag limits, etc., as shown.
4. Interstate Waters — see pages 38–39.

## Buying a License

Fishing and hunting licenses, valid Jan. 1 to Dec. 31 of each year, may be purchased online via [fishnh.com](http://fishnh.com), from license agents, Fish and Game Department headquarters in Concord, Fish and Game Region 1, 2, and 4 offices, and some town or city clerks. Applicants must purchase their own licenses.

## Lost Licenses

Lost licenses may be reprinted at the original issuing agent or Fish and Game's Concord headquarters. If purchased at a license agent, and it is at least one week from the date of issue, the license can be reprinted from the online sales site. There is no charge for reprints, however, there is a limit on the number of reprints allowed.

## Violation/Revocation

Convictions for violations of any fishing law or rule, littering, or criminal trespass (RSA 214:19; 207:36-b; 635:2) will result in the revocation of your fishing license or privilege.

## Exceptions

A fishing license is not required for children under the age of 16 (RSA 214:2).

## Fisheries Habitat Fee

All freshwater anglers pay a \$1 fisheries habitat fee, which is included in the license price. Revenue is used to improve and restore fisheries habitats. For more information, see page 32.

## Residency Requirements

To obtain a license at resident rates, the person must present to the issuing agent a valid New Hampshire driver's license or non-driver's picture identification card issued by the N.H. Department of Safety, Div. of Motor Vehicles. Whenever the applicant is under 18 years of age, the parent or guardian of the applicant shall be a resident and present their valid N.H. driver's license or non-driver's picture identification.

Note: Any person who is no longer a legal resident of the state, but still retains a valid N.H. driver's license, is guilty of a misdemeanor if he/she tries to obtain a resident fishing, hunting, or trapping license based on this driver's license.

## Military Licenses

N.H. residents who are regular active duty in the US Army, Navy, Marines, Air Force, or Coast Guard permanently stationed outside the state are eligible for free temporary hunting and fishing licenses and may acquire them at no charge. Available at N.H. Fish and Game Headquarters in Concord; Region 1, 2 and 4 offices; or by mail or fax (603) 271-5829 (download an Active Duty Military License application from the Fish and Game website and send with duty orders). A copy of duty orders must be presented for verification. Call (603) 271-3422 for information.

Non-resident military personnel on regular, active duty, and permanently stationed in New Hampshire, may purchase licenses at N.H. resident rates. (Cannot be purchased online or at Walmart).

## Buy Your Annual Hike Safe Card

\$25 for individual or \$35 per family. Available through online purchase only, at [wildnh.com/safe](http://wildnh.com/safe). Hike Safe Cards are good for the calendar year (expiring on December 31). Card holders are not liable to pay rescue costs, with some exceptions. Purchase is voluntary.

A great way to support the Fish and Game Search and Rescue Fund.

If you have a current N.H. fishing or hunting license or OHRV, snowmobile, or boat registration, you are already covered!



SHOPWILDNH.COM



Connecting you to life outdoors™



# LICENSES: FEES & REQUIREMENTS

	TYPE OF LICENSE	2021 FEE	AGE
N.H. RESIDENTS	<b>Resident Hunting &amp; Freshwater Fishing<sup>1</sup></b> Proof of hunter ed. course or previous hunting license required.	\$56.00	16–67
	<b>Resident 1-Day Freshwater Fishing<sup>1</sup></b>	\$10.00	16–67
	<b>Resident Freshwater Fishing<sup>1</sup></b>	\$45.00	16–67
	<b>Recreational Saltwater Fishing<sup>2</sup></b>	\$11.00	16+
	<b>Senior Freshwater Fishing<sup>1,3</sup></b> Available to N.H. residents born in 1948 or later, and at least 68 years of age at the time of purchase. Must be purchased annually.	\$7.00	68+
	<b>Senior Combination Hunting and Fishing<sup>1,3</sup></b> Available to those born in 1948 or later, and at least 68 years of age at the time of purchase. Must be purchased annually. Proof of hunter education course or previous hunting license required.	\$7.00	68+
NONRESIDENTS	<b>Nonresident Hunting &amp; Freshwater Fishing<sup>1</sup></b> Proof of hunter ed. course or previous hunting license required.	\$151.00	16+
	<b>Nonresident Freshwater Fishing<sup>1</sup></b> (all species)	\$63.00	16+
	<b>Recreational Saltwater Fishing<sup>2</sup></b>	\$11.00	16+
	<b>Nonresident 1-Day Freshwater Fishing<sup>1</sup></b>	\$15.00	16+
	<b>Nonresident 3-Day Freshwater Fishing<sup>1</sup></b> (consecutive days only)	\$28.00	16+
	<b>Nonresident 7-Day Freshwater Fishing<sup>1</sup></b> (consecutive days only)	\$35.00	16+

**NOTE:** All license prices include a \$1.00 agent fee. A \$1.00 Fisheries Habitat Fee has been added to all Freshwater Fishing Licenses. A \$2.00 transaction fee (\$2.75 online) is charged for each license form. Hunting licenses also require a \$2.50 wildlife habitat fee.

1 Fishing licenses allow taking of fish in freshwater.

2 A N.H. Recreational Saltwater License is required for recreational taking, possessing, or transporting of finfish from N.H. coastal and estuarine waters. For more information, see the *N.H. Saltwater Fishing Digest*.

3 For N.H. residents born in 1947 or earlier, **a free permanent Milestone license is available** for fishing (freshwater) or combination hunting & fishing. Available only at Fish and Game headquarters in Concord or Regional Offices 1, 2, and 4; also available at select licensing agents, or by mail using the application at [fishnh.com](http://fishnh.com).

SELECTED MISCELLANEOUS LICENSES Available only in person or by mail at the N.H. Fish and Game Department, 11 Hazen Drive, Concord, NH 03301. (603) 271-3422.	2021 FEE
<b>Newborn Lifetime NH Hunting &amp; Freshwater Fishing</b> Parent/legal guardian must be N.H. resident. Child's birth certificate required. Available from birth to day before first birthday. Purchase at Fish and Game headquarters or by mail ( <a href="http://fishnh.com/licensing/forms.html">see fishnh.com/licensing/forms.html</a> ).	\$304.50
<b>Resident Guide, Hunting or Fishing</b>	\$100.00
<b>Nonresident Guide, Hunting or Fishing</b>	\$100.00
<b>Bait Dealer's Retail</b>	\$26.00
<b>Bait Dealer's Wholesale</b>	\$76.00

## Buying Your License

New Hampshire fishing licenses can be purchased online at [fishnh.com](http://fishnh.com), from one of our 185 friendly license agents statewide (listed at [fishnh.com/licensing](http://fishnh.com/licensing)), or in person or by mail at Fish and Game headquarters, 11 Hazen Drive, Concord, NH 03301. A \$2 transaction fee is charged for each license form (\$2.75 for Internet purchases).

## Carry Your License

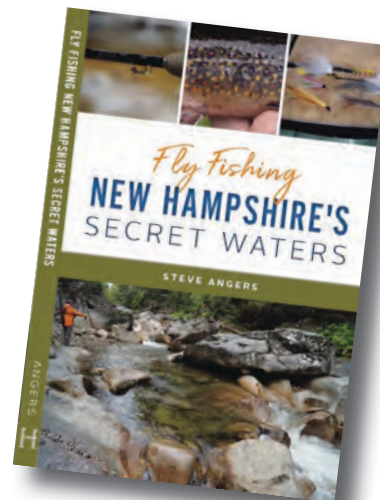
The license must be carried on your person when fishing or hunting. For **fishing licenses** (not hunting), a pdf or other fixed image of a valid license visible on a smart phone is sufficient to comply with the law, as long as a Conservation Officer can view the information contained on the license, and a photo ID can be presented.

## Non-Resident Student Licenses

Full-time students attending school in New Hampshire may purchase non-resident fishing or hunting licenses at resident rates. Students may be in high school, college or graduate school; they must be registered for at least 12 credit hours per semester. To get the reduced rate, you must show a valid, current school ID. These licenses are sold only at Fish and Game headquarters, 11 Hazen Drive, Concord NH 03301, in person or by mail.

## FLY FISHING IN NEW HAMPSHIRE'S SECRET WATERS

New Hampshire's hard and rugged exterior protects one of America's richest native brook trout fisheries. The anticipation of the largest mayfly hatch contrasts with the quiet, deep waters of holding



pools, and anglers are rewarded when they learn how to read the rivers and streams. With more than fifty years of experience, Steve Angers reveals some of his favorite spots and details what it takes to be successful when fishing in the Granite State.

Available at  
**NorthCountryAngler.com**  
or other fine resellers



# DEFINITIONS

**Angling:** The taking of fish by line in hand or rod in hand to which is attached a cast of artificial flies, or an artificial bait, or hooks or other devices for the attachment of bait. A person may use up to two lines. Rod holders are permitted.

**Artificial bait:** Any fishing bait constructed by humans as an imitation or substitute for natural bait or fish forage and includes but is not limited to spinners, spoons, poppers, plugs, jigs and plastic, rubber or other artificial imitations of natural bait. Artificial bait does not include a fly.

**Bag and creel limit:** The number or weight of any kind of wildlife permitted to be killed in a specified time.

**Bait:** Dead or live natural bait whether in part or whole and includes but is not limited to fish, mollusks, crustaceans, amphibians, invertebrates, reptiles, or their progeny or eggs, and power bait or any ingestible substance.

**Black bass:** Largemouth and smallmouth bass.

**Brook trout:** Brook, rainbow, brown and golden trout, Loch Leven trout and all their hybrids.

**Cast of artificial flies:** No more than 3 flies.

**Closed Season:** That period of time during which fish, game, wild or fur-bearing animals, or marine species may not be taken or killed, and all periods of time not included within the open season.

**Culling:** The act of exchanging a fish for one of the same species already in possession.

**Cusk fishing device:** A device for storing line in a manner which is not free-running and is securely attached to the device and to which is attached a sinker, weighing at least one ounce,

not more than 6 inches above, and independent of, an attached single hook for bait. The weight must rest on the bottom of the lake. If using lead sinker, it must be greater than one ounce. See page 33. The device shall be plainly marked with name and address of the person using it. These devices may only be used on certain approved waterbodies listed on page 31.

**Fly:** A hook dressed with feathers, hair, thread, tinsel, or any similar material to which no spinner, spoon, or similar device is added.

**Fly-fishing:** Fishing by trolling or casting with only fly rod, fly reel, and fly line combination with an artificial fly or cast of artificial flies attached, and does not include the use of spinning, spincast, and casting rods and reels and lead core lines.

**Ice fishing:** Taking freshwater fish during the open season through man-made openings in the ice by the use of ice fishing devices.

**Ice fishing device:** Any device used to take fish through the ice, including a tip-up, jig stick, rod in hand, or handline, exclusive of a cusk fishing device.

**Ice-in:** That period when the surface of a body of water or a portion thereof is covered with sufficient ice to safely support a person.

**Inclusion of dates:** Whenever a period is named during which an act is permitted or prohibited, both the first and second dates named shall be included within such period.

**Man-made opening:** A hole in the ice made by an ice cutting tool, including but not limited to augers, chisels, and saws. Man-made openings shall not include areas that remain ice-free due to current and movement created by dock aerators and similar devices.

**Minimum length or minimum total length:** The shortest total length of a fish allowed to be taken.

**Net:** Any open fabric constructed of string, cord, thread, or wire knotted or woven together in such a way as to be capable of entraining or entrapping finfish.

**Open Season:** That period of time during which wildlife may be legally taken or killed.

**Set line:** An unattended line placed in the fresh waters of the state (including through the ice) for the purpose of taking fish, which is not under the direct view and control of the person placing the line.

**Single hook artificial lure:** An artificial lure with one single hook with not more than 3 hook points.

**Snagging, snatching, or lifting:** The taking or attempted taking of any fish by foul hooking, that is, hooking the fish in any part of the body other than inside the mouth.

**Take or Taking:** Includes pursuing, shooting, hunting, killing, capturing, trapping, snaring, and netting wildlife, and all lesser acts, such as disturbing, harrying, worrying, wounding, or placing, setting, drawing, or using any net or other device commonly used to take wildlife, whether they result in taking or not. Includes every attempt to take and every act of assistance to every other person in taking or attempting to take wildlife, provided that whenever taking is allowed by law, reference is had to taking by lawful means and in a lawful manner.

**Tandem fly:** Two single-pointed hooks dressed with feathers, hair, thread, tinsel, or any similar material and joined together by a single strand of wire or line, one behind the other to form a single artificial fly. There shall be no spinner, spoon, or similar device added.

**Tip-up:** A fishing device for storing line, designed to be set through the ice and to indicate when something has disturbed the bait attached thereto.

**Total length:** The greatest possible length of the fish with mouth closed and caudal (tail) fin rays squeezed together to give the maximum overall measurement. For all fish that have a total length limit, the head and tail must remain intact while on or leaving the waters of the state.

**Tributary:** Any waters flowing directly or indirectly into a waterbody.


**Trolling:** Angling by trailing a line from a vessel defined in RSA 270-D:1 XI being propelled by machinery, electric, or manual power.

## Landowner Protections

New Hampshire State law provides certain protections for landowners who open their land to those using it for outdoor recreation. Learn more at [www.fishnh.com/fishing/trout-year-round.html](http://www.fishnh.com/fishing/trout-year-round.html)

**DON'T LET A LAWBREAKER OFF THE HOOK**

Protect New Hampshire's natural resources.  
Know your bag limits and report wildlife law violators.



**OPERATION GAME TIME**  
24-HOUR HOTLINE: 1-800-344-4262  
[wildnh.com/ogt](http://wildnh.com/ogt)



## Help Protect Nongame Wildlife

When you buy your fishing license, consider adding a donation to Fish and Game's Nongame and Endangered Wildlife Program. Nongame projects protect endangered fish, conserve key wetland habitats, and help a wide range of species. Donate online at [wildnh.com/nongame/donate.html](http://wildnh.com/nongame/donate.html).



# LEGENDARY FISHING AWAITS!

## **SALMON RIVER, PULASKI NEW YORK**

**I**t only takes one light tackle hook-up for you to understand why they are called Steelhead.

Anglers from around the world will tell you that these underwater lightning bolts do more than steal your bait. By the time they have had their way with you, they'll have stolen your heart and soul. Whether heading upstream for a fall feeding frenzy or dropping back to Lake Ontario in the spring, these 5-10 lb. "chromers" will give you the freshwater fight that brings you back for more.

Let this be your year to experience the legendary waters of the Salmon River -- long regarded as one of North America's premier steelhead destinations!



[visitoswegocounty.com](http://visitoswegocounty.com)

## **ORDER YOUR FREE GUIDE!**

CALL US AT:

## **315.349.8322**





# IMPORTANT LAWS & RULES

- **Possession and use of live fish for bait:** Only the following species shall be possessed and used as live fish for bait when fishing any freshwaters of the state: rainbow smelt (*Osmerus mordax*), longnose dace (*Rhinichthys cataractae*), blacknose dace (*Rhinichthys atratulus*), northern redbelly dace (*Phoxinus eos*), lake chub (*Couesius plumbeus*), creek chub (*Semotilus atromaculatus*), fallfish (*Semotilus corporalis*), golden shiner (*Notemigonus crysoleucas*), common shiner (*Luxilus cornutus*), emerald shiner (*Notropis atherinoides*), spottail shiner (*Notropis hudsonius*), silvery minnow (*Hybognathus nuchalis*), creek chubsucker (*Erimyzon oblongus*), longnose sucker (*Catostomus commersoni*), white sucker (*Catostomus commersoni*) and killifish/tomcod (*Fundulus sp.*).
- **Approved bait fish species (excluding white suckers)** may be taken for personal use by licensed anglers with up to six traps not over 18 inches long each, with an opening not over one inch in diameter, or a circular drop net not over 48 inches in diameter; or a square net of equal area. Each trap must have the angler's name and address on it. Daily limit 2 quarts (liquid measure). There is no daily limit for white suckers.
- **Commercial harvesting** of bait is permitted with a bait dealer's license and under specific rules. The license is available from the New Hampshire Fish and Game Department. More on page 37.
- **While taking fish in open water, two hooks may be used for bait per line**, one with a single hook point and the other with no more than three hook points, **except** for certain lake trout and salmon lakes, where only a single hook with a single hook point may be used (see pages 14–20).

## Let's Go Fishing!

Want to learn how to fish, enhance your fishing skills, help turn a friend into a fishing buddy? Check out *Let's Go Fishing* classes from N.H. Fish and Game's Aquatic Resources Education team! Free courses are offered throughout the state by trained volunteer instructors who bring a wealth of experience and knowledge to help anglers get started.

Courses available for adults and children on fly fishing, saltwater fly fishing, fly tying, ice fishing and more. Visit [fishnh.com](http://fishnh.com).



- A person may use **up to 2 lines** for open-water fishing.
- **Fishing is allowed at any time of the day or night, except the taking of brook trout, brown trout, rainbow trout, lake trout, trout hybrids, and salmon** between two

hours after sunset and one hour before sunrise is prohibited.

- **Traps, nets, fish houses, holding boxes, or other receptacles** used to take, hold, or to keep live bait fish in public waters must be marked with the name and address of the owner and user.
- **While anglers are being guided**, as defined in RSA 207:1 XII and XIII, and taking freshwater fish by trolling (as defined on page 9) the number of lines being used for angling shall not exceed the legal number of lines allowed for each angler, excluding the guide(s).
- **Fishing tournaments on New Hampshire waters** require a permit. Applications are taken on a first-come, first-served basis and are available from the New Hampshire Fish and Game Department. Except for bass tournaments, the permit fee is \$49.00.
- **Bass fishing tournaments:** Applications are accepted beginning October 1 for permits requested for the following year. Applications for each bass tournament event received between October 1 and December 1 will be assigned a random computer-generated number. After the lottery, "first come, first serve applications" will be accepted prior to issuance starting March 1 and will be issued a sequential number upon receipt. When there are multiple requests for bass tournaments on the same date and waterbody, preference will be given to the application(s) for bass tournament(s) with the lowest assigned

**When in doubt about whether a fish you have caught is legal, play it safe and release the fish unharmed.**

## Ban on Lead Sinkers and Jigs

State law prohibits the use of lead sinkers and jigs weighing 1 ounce or less, regardless of length, in all fresh waters of New Hampshire. The sale of these lead sinkers and jigs is prohibited in the state of New Hampshire. Learn more at [fishleadfree.org](http://fishleadfree.org).



## Catch & Release

- **Time is of the essence.** Play and release the fish as quickly and carefully as possible.
- **When landing a fish**, use a net with fine mesh or rubber net to avoid injury. A net is probably not necessary for small fish. Keep the fish in the water as much as possible. A fish out of water is suffocating and could be injured.
- **When releasing a fish**, handle it as little as possible when removing the hook. When handling the fish, do not let it flop around or squeeze it. Gently hold the fish around the middle and upside down while removing the hook. This position calms the fish and deters it from moving around.
- **Remove the hook** with small pliers or use your thumb and forefinger to loosen and back out the hook. If a hook cannot be easily removed, cut the leader as close as possible to the hook. The hook will rust or fall out in a short time.
- **To revive a tired fish**, hold it in a swimming position with one hand under its bottom jaw and the other hand grasping the fish in front of the tail. Gently move the fish back and forth through the water until it is able to swim away.





# IMPORTANT LAWS & RULES

number(s). The permit fee is \$49.00, except for "catch and immediate release" and "club level" bass tournaments which are \$10.00.

## Unlawful Actions

- The sale of freshwater fish is prohibited, other than approved bait fish sold by licensed individuals.
- Snagging fish in freshwaters is prohibited. Any fish accidentally snagged must be immediately released to the water.
- No fish may be taken by use of a set line (as defined on page 9) in freshwater, which would include so-called "jug fishing."
- Exceeding daily bag limits of fish is prohibited, whether taken from one or several water bodies.
- No person may have in his possession at one time more wildlife (including fish) than he may lawfully take in 2 days.
- No person shall have live lake trout, landlocked salmon, brook trout, black bass, northern pike, or black crappie in their possession, except if the person is a bass tournament permittee or is an aquaculturist permittee or has a permit to import, possess, or release these fish.
- Release of fish in waters other than where caught is prohibited. Fish must be returned to the water where taken.
- Culling of fish, except during permitted bass tournaments, is prohibited.
- The water surrounding any dam containing a fishway is closed to fishing. (See *Rivers and Streams with Special Rules* on pages 23–25.)
- The use of alewives, carp, or goldfish as live bait while fishing is prohibited. The use of shad or whitefish as bait for cusk is prohibited.
- Importation of live fish or their eggs, including bait fish, is prohibited without a special permit.
- Except as otherwise specifically permitted, it is unlawful to use or have in possession poisons, explosives, net, set line, fishing otter, trawl, grapple, spear, jack, jack light, or electrical or other device for killing or stunning fish.
- To counsel or aid another in violating a fishing rule is prohibited.
- The use of lead sinkers and jigs weighing 1 ounce or less, regardless of length, is prohibited in all fresh water. Sale of lead sinkers and jigs (1 ounce or less, regardless of length) is prohibited.
- The use of a gaff to take fish in any fresh waters of the state is prohibited.
- To continue to take or attempt to take fish after filling the daily bag limit for that species of fish is prohibited.
- It is illegal to tag, brand, fin-clip, or otherwise mark any fish prior to release without written permission to do so from the N.H. Fish and Game Executive Director.

## Don't Spend All Your Time Fishin' Around for Information

Just visit our website!  
[fishnh.com](http://fishnh.com)



- Buy your N.H. fishing license online
- Find out where to fish
- See where we've stocked trout!
- Get fishing tips and depth maps
- Download the Freshwater Fishing Guide
- Fish New Hampshire and relax... We have what you're looking for!

**Violation of any fishing rule or regulation may result in the loss of the violator's license or privilege to fish in New Hampshire.**



**US Army Corps  
of Engineers®**

Find us in NH at these lakes & dams

Franklin Falls  
Blackwater  
Otter Brook  
Surry Mountain  
Hopkinton-Everett  
Edward MacDowell



# LAKES & PONDS: GENERAL AND SPECIAL RULES

## General Fishing Rules

General Fishing Rules apply to most lakes and ponds in the state. Follow the seasons, bag limits, length limits, and important notes listed with each species in the chart on the facing page. **The taking of brook trout, brown trout, rainbow trout, lake trout, trout hybrids, and salmon between two hours after sunset and one hour before sunrise is prohibited.**

## Lakes & Ponds with Special Rules — Pages 14–20

This section has information on lakes and ponds with Special Rules. These waterbodies have rules that may differ from, or be in addition to, the *General Fishing Rules for Lakes & Ponds*.

Turn to *Lakes & Ponds: Special Rules* on pages 14–20. If you find the waterbody you intend to fish in the table, look to the right for the waterbody's designation under the "Special Rules" column. It will either be a Lake Trout and/or Salmon Lake, a Fly-Fishing-Only Pond, a Trout Pond, a Wild Trout Pond, or a miscellaneous special regulation water.

### Want Answers About Your Favorite Lake's Water Quality?

Join the New Hampshire Department of Environmental Services (DES) Volunteer Lake Assessment Program (VLAP) and find out!

### Be a VLAP Volunteer!

Volunteers provide critical water quality data to DES by collecting water samples from lakes that they live near or fish most. This data helps DES to determine if lakes are meeting water quality standards and if lake restoration projects are required.

For more information about your favorite lake or how to join VLAP, contact Sara Steiner, VLAP Coordinator, at (603) 271-2658 or [sara.steiner@des.nh.gov](mailto:sara.steiner@des.nh.gov).

This page (see below) has information on season dates, bag limits, length limits and other species information for these special waters.

**Interstate Waters:** See pages 38–39.

## Lake Trout and/or Salmon Lakes

Several waterbodies are managed for lake trout and/or landlocked salmon, and are open year-round subject to restrictions listed below. For information on bag and length limits for species other than trout and salmon in this waterbody, see *Lakes & Ponds: General Rules* on the next page.

1. The taking of brook trout, brown trout, rainbow trout, lake trout, trout hybrids, and salmon between two hours after sunset and one hour before sunrise is prohibited.
2. Minimum Length:
  - » Brook trout, rainbow trout, brown trout and their hybrids: 15 inches.
  - » Lake trout: 18 inches
  - » Landlocked salmon: 15 inches.
  - » The head and tail must remain intact while on or leaving the waters of the state.
3. From January 1 to March 31:
  - » Fish may be taken by ice fishing only;
  - » The combined daily bag limit for all trout species, including lake trout, is 2 fish;
  - » Closed to the taking of landlocked salmon (salmon season is from April 1 to September 30);
  - » Two (2) ice fishing devices are allowed per person. Single hook with single hook point for bait, or an artificial lure or flies shall be used to take fish through the ice;
  - » Six (6) cusk fishing devices may be used to take cusk on approved waterbodies (see page 31).
4. From April 1 to September 30:
  - » The combined daily limit for lake trout, salmon, brook trout, rainbow trout, brown trout and their hybrids is 2 fish;
  - » Open to the taking of all species, except no smelt may be taken from March 15 to June 15.

5. From October 1 until December 31:

» Closed to the taking of lake trout, salmon, brook trout, brown trout, rainbow trout and shad (whitefish).

6. From April 1 through December 31, no person may take fish through the ice, from the ice, or from any object supported by the ice.

## Trout Ponds

Designated Trout Ponds are managed for trout, and are open to fishing for all species from the fourth Saturday in April through October 15. Fishing for any species is prohibited from October 16 until the fourth Saturday in April the following year. For information on bag and length limits for species other than trout, see *Lakes & Ponds: General Rules* on the next page.

1. The taking of brook trout, rainbow trout, brown trout, lake trout, trout hybrids and salmon between two hours after sunset and one hour before sunrise is prohibited.
2. Trout ponds open on the fourth Saturday in April. Closed to salmon October 1 and to all species October 16.
3. The daily combined limit for trout is 5 fish or 5 pounds, whichever limit is reached first.
4. The use of live fish, or their eggs, for bait is prohibited. The use of salmon eggs, however, is permitted.

## Fly-Fishing-Only Ponds

All rules listed above for *Trout Ponds* apply. In addition, fish may be taken only by fly-fishing (fishing by trolling or casting with only fly rod, fly reel, and fly line combination with an artificial fly or cast of artificial flies attached, and does not include the use of spinning, spincast, and casting rods and reels and lead core lines).

## Wild Trout Ponds

All rules listed above for *Trout Ponds* apply, except:

1. Open season dates are from the fourth Saturday in April through Labor Day;
2. All fish shall be immediately released; and
3. Only single hook, barbless artificial lures and flies shall be used.

## Water Supply Reservoirs

The waters listed at right are partially or wholly closed to fishing because they are public water supply reservoirs. Contact NHDES Drinking Water and Groundwater Bureau (603-271-7061) for more details.

- Babbidge Reservoir (Roxbury)
- Bear Pond (Warner)
- Canaan Street Lake (Canaan)
- Hanover Reservoirs (Hanover)
- Gilman Pond (Unity)
- Massabesic Lake (Manchester/Auburn)
- Penacook Lake (Concord)
- Rochester Reservoirs (Rochester/Strafford)
- Round Pond (Barrington)
- Upper Beech Pond (Wolfeboro)
- Woodward Pond (Roxbury)



# LAKES & PONDS: GENERAL RULES

## GENERAL FISHING RULES FOR LAKES & PONDS

SPECIES	SEASON	BAG LIMITS & MINIMUM LENGTHS	IMPORTANT NOTES
<b>Black Bass</b> (Smallmouth Bass & Largemouth Bass)	Jan. 1 to March 31	2 fish daily limit; only 1 fish >16 inches.	See exceptions for Clement Pond/Joe Silvia Lake, Grassy Pond, Gregg Lake, and Warren Lake.
	April 1 to May 14	2 fish daily limit; no length limit.	
	May 15 to June 15	Catch and release only.	Artificial lures and flies only.
	June 16 to June 30	2 fish daily limit; no length limit.	
	July 1 to Dec. 31	5 fish daily limit; no length limit.	
<b>Brook Trout, Brown Trout, Rainbow Trout and their hybrids</b>	Open water (ice-out to ice-in)	5 fish or 5 pounds daily limit, whichever is reached first; no length limit.	Many waterbodies with trout have special rules—see page 12. Designated trout ponds and fly-fishing-only ponds open the fourth Saturday in April and close Oct. 15. Lake Trout and Salmon Lakes are closed to taking trout from Oct. 1 to Dec. 31. Designated wild trout ponds open the fourth Saturday in April through Labor Day.
	Through the ice	2 fish daily limit; no length limit.	Designated trout ponds are closed to ice fishing.
<b>Lake Trout</b>	Jan. 1 to Sept. 30	2 fish daily limit. Minimum length 18 inches. Daily bag limit for lake trout and salmon is 2 fish (2 lake trout, 2 salmon, or 1 of each).	Lake Trout and Salmon Lake rules are on page 12. Stinson Lake (Rumney) and Tarleton Lake (Piermont) are examples of General Rules Waters that have lake trout.
<b>Landlocked Salmon</b>	April 1 to Sept. 30	2 fish daily limit. Minimum length 15 inches. Daily bag limit for lake trout and salmon is 2 fish (2 lake trout, 2 salmon, or 1 of each).	Most waterbodies with landlocked salmon are designated as Lake Trout and/or Salmon Lakes; see page 12. Taking landlocked salmon from Oct. 1 through March 31 is prohibited.
<b>Chain Pickerel</b>	No closed season.	10 fish daily limit; no length or weight limits.	See illustration on page 34.
<b>Northern Pike</b>	No closed season.	1 fish daily limit; minimum length 28 inches.	See illustration on page 34.
<b>Walleye</b>	No closed season.	2 fish daily limit; minimum length 18 inches; no weight limit.	See page 38 for walleye regulations in the Connecticut River.
<b>White and Yellow Perch, Black Crappie, Sunfish, Horned Pout</b>	No closed season.	25 fish each species daily limit; no more than 50 fish total combined; no length or weight limits.	
<b>Rock Bass</b>	No closed season.	No daily limits; no length or weight limits.	
<b>Carp</b>	No closed season.	No daily limits; no length or weight limits.	In addition to angling and ice fishing, carp may be taken by bow and arrow with a cord attached from the Connecticut River, Merrimack River and Mascoma Lake.
<b>Cusk</b>	No closed season.	No daily limits; no length or weight limits.	Can be taken by all legal methods (angling, trolling, tip-ups). For approved cusk fishing device waters, see page 31.
<b>River Herring</b>	No open season.		
<b>American Shad</b>	No closed season.	Catch and release only.	
<b>Lake Whitefish</b>	Jan. 1 to Sept. 30	2 fish daily limit; no length or weight limits.	
<b>Round Whitefish</b>	No open season.		All Round Whitefish must be immediately released.
<b>Smelt</b>	For smelt angling rules and waterbodies open to the taking of this species by dip net, see page 33.		
<b>Suckers</b>	No closed season for angling, ice fishing or traps.	No daily limits; no length or weight limits.	Suckers may be taken for personal use with two traps, not more than 50 inches long, 30 inches wide, with an opening no smaller than 3½ inches in diameter. All traps or holding boxes will have the name and address of the owner.
	March 1 to May 31	No daily limits; no length or weight limits.	Suckers may be taken by hand dip nets not over 18 inches in diameter, drop nets not over 48 inches in diameter, spears or bow and arrow with cord attached. Suckers taken by spear or bow and arrow must not be left in, or adjacent to, the body of water.

# LAKES & PONDS WITH SPECIAL RULES

WATERBODY	TOWN(S)	ACRES	WATERBODY DESIGNATION	ADDITIONAL RULES	ACCESS	RESTRICTIONS*
Airport Marsh	Whitefield	12	Trout Pond		Cartop	
Archery Pond	Allenstown	1	Trout Pond; Fly-fishing only	Daily limit for brook trout is 2 fish	Shorebank	No boats
Back Lake	Pittsburg	348	Trout Pond		Ramp	10 MPH speed limit some areas
Barbadoes Pond	Dover, Madbury	16	Trout Pond		Shorebank	
Basin Pond	Chatham	40	Trout Pond		Cartop	No motors
Bear Brook Pond, Big	Errol	12	Trout Pond		Cartop	
Bear Brook Pond, Little	Wentworths Location	5	Trout Pond; Fly-fishing only		Remote Walk-in	
Big Brook Bog	Pittsburg	36	Trout Pond; Fly-fishing only		Cartop	No motors
Black Mountain Pond	Sandwich	7	Trout Pond		Remote Walk-in	No motors
Black Pond	Lincoln	5	Trout Pond		Remote Walk-in	No motors
Blue Pond	Madison	7	Trout Pond		Remote Walk-in	
Bog Pond, Little	Odell	34	Trout Pond		Cartop	
Boundary Pond	Pittsburg	20	Trout Pond; Fly-fishing only		Remote Walk-in	No motors
Bragg Pond	Millsfield	14	Trout Pond		Remote Walk-in	
Butterfield Pond	Wilmot	12	Trout Pond		Remote Walk-in	No motors
Campton Pond (unnamed)	Campton	37		1) This waterbody is open to the taking of all species, except salmon and smelt, January 1 through October 15. 2) Fishing through the ice, from the ice, or from any object supported by the ice is prohibited.	Shorebank	No motors
Carr Pond	Clarksville	11	Trout Pond		Remote Walk-in	
Carter Pond	Beans Purchase	1	Trout Pond		Remote Walk-in	No motors
Center Pond	Nelson	31	Trout Pond		Ramp	No motors
Chapin Pond	Newport, Claremont	15	Trout Pond; Fly-fishing only		Shorebank	
Clarksville Pond	Clarksville	22	Trout Pond; Fly-fishing only		Cartop	No petroleum motors; electric motors limited to trolling speed
Clement Pond (Joe Sylvia Lake)	Hopkinton	119		From Jan. 1 to March 31, the taking of black bass from 15 to 20 inches in length is prohibited. The daily limit of black bass is 3 fish, of which only one may be longer than 20 inches.	Ramp	
Clough Pond	Loudon	44	Trout Pond		Ramp	
Cold Spring Pond (Abbott Forest Pond)	Stoddard	31	Trout Pond		Cartop	No motors
Coldrain Pond	New Durham	18	Trout Pond; Fly-fishing only		Remote Walk-in	
Cole Pond	Enfield	17	Trout Pond; Fly-fishing only	No person shall take brook trout 12 to 16 inches in length. All brook trout 12 to 16 inches shall be immediately released unharmed. The daily limit for brook trout shall be 2 fish, of which only one may be over 16 inches.	Remote Walk-in	
Connecticut Lake, First	Pittsburg	3,071	Lake Trout and/or Salmon	There is no minimum length for brook trout, rainbow trout, brown trout, or their hybrids. Yellow perch cannot be used for bait. From April 1 through September 30, the combined daily limit for lake trout, salmon, brook trout, rainbow trout, brown trout, and their hybrids is 4 fish, of which no more than 2 fish may be lake trout and/or salmon.	Ramp	
Connecticut Lake, Second	Pittsburg	1,102	Lake Trout and/or Salmon	Same as First Connecticut Lake, above.	Ramp	
Connecticut Lake, Third	Pittsburg	231	Lake Trout and/or Salmon	Same as First Connecticut Lake, above.	Ramp	
Conner Pond	Ossipee	85	Trout Pond		Cartop	No petroleum motors; headway speed limit
Conservation Pond	Wentworth	3	Trout Pond		Remote Walk-in	

\*More details on restricted bodies of water at [nh.gov/safety/divisions/nhsp/fob/marine-patrol/restricted.html](http://nh.gov/safety/divisions/nhsp/fob/marine-patrol/restricted.html)



# LAKES & PONDS WITH SPECIAL RULES (CONTINUED)

WATERBODY	TOWN(S)	ACRES	WATERBODY DESIGNATION	ADDITIONAL RULES	ACCESS	RESTRICTIONS*
Conway Lake	Conway, Eaton	1,316	Lake Trout and/or Salmon	The area of the lake that lies within 500 feet of the outlet dam shall be closed to all fishing from Oct. 16 through Dec. 31. When trolling to take fish: 1) Only one artificial bait, one fly, one tandem fly or one bait shall be used per rod; and, 2) Only one hook with a single hook point shall be used with bait.	Ramp	No houseboats
Coon Brook Bog	Pittsburg	19	Trout Pond; Fly-fishing only		Cartop	No motors
Corser Pond	Errol	5	Trout Pond		Remote Walk-in	
Cranberry Bog Pond	Columbia	4	Trout Pond		Remote Walk-in	
Dan Hole Pond, Big	Tuftonboro, Ossipee	443	Lake Trout and/or Salmon	There is no minimum length for brook trout, rainbow trout, brown trout, or their hybrids. Yellow perch cannot be used for bait. From April 1 through September 30, the combined daily limit for lake trout, salmon, brook trout, rainbow trout, brown trout, and their hybrids is 4 fish, of which no more than 2 fish may be lake trout and/or salmon.	Ramp (at campground)	
Devils Washbowl	Odell	6	Trout Pond		Remote Walk-in	
Diamond Pond, Big	Stewartstown	181	Lake Trout and/or Salmon	There is no minimum length for brook trout, rainbow trout, brown trout, or their hybrids. Yellow perch cannot be used for bait. From April 1 through September 30, the combined daily limit for lake trout, salmon, brook trout, rainbow trout, brown trout, and their hybrids is 4 fish, of which no more than 2 fish may be lake trout and/or salmon.	Ramp	
Diamond Pond, Little	Stewartstown	60	Trout Pond		Ramp	No motor over 10 HP
Dublin Lake (Monadnock Pond)	Dublin	236	Trout Pond		Ramp	10 MPH speed limit
Dummer Pond, Big	Dummer	114	Trout Pond		Cartop	
Dummer Pond, Little	Dummer	31	Trout Pond		Cartop	
Duncan Lake	Ossipee	83	Trout Pond		Shorebank	6 MPH speed limit
Dustin Pond	Wentworths Location	5	Trout Pond		Remote Walk-in	
East Inlet	Pittsburg	92	Trout Pond		Cartop	
Echo Lake	Franconia	38	Trout Pond		Ramp	
Ethan (Willey) Pond	Bethlehem	5	Wild Trout Pond		Remote Walk-in	No motors
Exeter Reservoir (Water Works Pond)	Exeter	20	Trout Pond		Shorebank	
Falls Pond	Albany	8	Trout Pond		Remote Walk-in	No motors
Ferrin Pond	Weare	18	Trout Pond		Shorebank	No motors
Flat Mountain Pond	Waterville Valley	28	Trout Pond		Remote Walk-in	No motors
Four Mile Pond	Dixs Grant	4	Trout Pond		Remote Walk-in	
Francis, Lake	Pittsburg	1,934	Lake Trout and/or Salmon	There is no minimum length for brook trout, rainbow trout, brown trout, or their hybrids. Yellow perch cannot be used for bait. From April 1 through September 30, the combined daily limit for lake trout, salmon, brook trout, rainbow trout, brown trout, and their hybrids is 4 fish, of which no more than 2 fish may be lake trout and/or salmon.	Ramp	
French Pond	Henniker	39	Trout Pond		Ramp	No motors over 5 HP
Gilmore Pond	Jaffrey	125	Trout Pond		Ramp	No wake area
Granite Lake (Munsonville Pond)	Nelson, Stoddard	238	Lake Trout and/or Salmon	There is no minimum length for brook trout, rainbow trout, brown trout, or their hybrids. Yellow perch cannot be used for bait. From April 1 through September 30, the combined daily limit for lake trout, salmon, brook trout, rainbow trout, brown trout, and their hybrids is 4 fish, of which no more than 2 fish may be lake trout and/or salmon.	Ramp	
Grassy Pond	Rindge	99		From Jan. 1 to March 31, the taking of black bass from 15 to 20 inches in length is prohibited. The daily limit of black bass is 3 fish, of which only one may be longer than 20 inches.	Ramp	
Greeley Pond, Upper	Livermore	3	Trout Pond		Remote Walk-in	No motors

\*More details on restricted bodies of water at [nh.gov/safety/divisions/nhsp/fob/marine-patrol/restricted.html](http://nh.gov/safety/divisions/nhsp/fob/marine-patrol/restricted.html)

# LAKES & PONDS WITH SPECIAL RULES (CONTINUED)

WATERBODY	TOWN(S)	ACRES	WATERBODY DESIGNATION	ADDITIONAL RULES	ACCESS	RESTRICTIONS*
Greenough Pond, Big	Wentworths Location	234	Lake Trout and/or Salmon	When trolling to take fish: 1) Only one artificial bait, one fly, one tandem fly or one bait shall be used per rod; and, 2) Only one hook with a single hook point shall be used with bait.	Cartop	
Greenough Pond, Little	Wentworths Location	42	Wild Trout Pond		Cartop	
Gregg Lake	Antrim	195		From Jan. 1 to March 31, the taking of black bass from 15 to 20 inches in length is prohibited. The daily limit of black bass is 3 fish, of which only one may be longer than 20 inches.	Ramp	Motors restricted to 150 hp or less
Guinea Pond	Sandwich	13	Trout Pond		Remote Walk-in	No motors
Gunstock Pond (Belknap Recreation Area Pond)	Gilford	4	Trout Pond		Shorebank	
Halfmile Pond	Enfield	8	Trout Pond		Remote Walk-in	
Hall Pond, Lower	Sandwich	13	Trout Pond		Remote Walk-in	No motors
Hall Pond, Middle	Sandwich	6	Trout Pond		Remote Walk-in	No motors
Hall Pond, Upper	Sandwich	23	Trout Pond; Fly-fishing only	No person shall take brook trout 12 to 16 inches in length. All brook trout 12 to 16 inches shall be immediately released unharmed. The daily limit for brook trout shall be 2 fish, of which only one may be over 16 inches.	Cartop	No motors
Harris Pond	Pittsburg	3	Trout Pond		Cartop	
Hatch Pond (Hidden Pond)	Eaton	19	Trout Pond		Cartop	
Hellgate Pond	Second College Grant	2	Trout Pond		Remote Walk-in	
Hopkins Pond (Adder Pond)	Andover	27	Trout Pond		Ramp	No motors
Hot Hole Pond	Concord, Loudon	27	Trout Pond		Ramp	No wake area
Hoyt Pond	Madbury	1	Trout Pond; Fly-fishing only		Shorebank	
Hunkins Pond	Sanbornton	16	Trout Pond		Cartop	No motors
Hunts Pond	Hancock	50	Trout Pond		Cartop	
Jacquith Pond	Pittsburg	1	Trout Pond		Remote Walk-in	
Jericho Lake	Berlin	127		1) This waterbody is open to the taking of all species, except salmon and smelt, all year-round by all legal methods. 2) The daily limit for northern pike is 3 fish. 3) The minimum length for northern pike is 20 inches.	Ramp	No petroleum motors; Electric motors no greater than 3 HP; 5 MPH speed limit
Jones Pond	Middleton	12	Trout Pond; Fly-fishing only	The daily limit for brook trout is 2 fish.	Remote Walk-in	
Judd Pond	Clarksville	3	Trout Pond		Remote Walk-in	
Kiah Pond	Sandwich	8	Trout Pond		Remote Walk-in	No motors
Ledge Pond	Madison	14	Trout Pond		Remote Walk-in	No motors
Lime Pond	Columbia	14	Trout Pond; Fly-fishing only	No person shall take brook trout 12 to 16 inches in length. All brook trout 12 to 16 inches shall be immediately released unharmed. The daily limit for brook trout shall be 2 fish, of which only one may be over 16 inches.	Remote Walk-in	
Lonesome Lake	Lincoln	12	Trout Pond		Remote Walk-in	
Long Pond	Benton	96	Trout Pond		Ramp	
Long Pond	Eaton	24	Trout Pond		Cartop	
Long Pond	Errol	33	Trout Pond		Cartop	
Long Pond	Lempster	114	Trout Pond		Ramp	6 MPH speed limit near islands
Long Pond	Millsfield	28	Trout Pond		Cartop	
Long Pond (Coniston Lake)	Croydon	139	Trout Pond		Ramp	
Lucas Pond	Northwood	40	Trout Pond		Cartop	No motors
Merrymeeting Lake	New Durham	1,233	Lake Trout and/or Salmon	When trolling to take fish: 1) Only one artificial bait, one fly, one tandem fly or one bait shall be used per rod; and, 2) Only one hook with a single hook point shall be used with bait.	Ramp	
Middle Pond	Pittsburg	8	Trout Pond		Cartop	No motors

\*More details on restricted bodies of water at [nh.gov/safety/divisions/nhsp/fob/marine-patrol/restricted.html](http://nh.gov/safety/divisions/nhsp/fob/marine-patrol/restricted.html)



# LAKES & PONDS WITH SPECIAL RULES (CONTINUED)

WATERBODY	TOWN(S)	ACRES	WATERBODY DESIGNATION	ADDITIONAL RULES	ACCESS	RESTRICTIONS*
Millen Lake	Washington	143	Trout Pond		Cartop	10 MPH speed limit certain times
Millsfield Pond, Big	Millsfield	165	Trout Pond		Ramp	
Millsfield Pond, Little (Moose Pond)	Millsfield	29	Trout Pond; Fly-fishing only		Remote Walk-in	
Mirror Lake (Blake Pond)	Dalton, Whitefield	54	Trout Pond		Ramp	
Moose Falls Flowage	Pittsburg	25	Trout Pond		Shorebank	No motors
Moose Pond	Pittsburg	10	Trout Pond; Fly-fishing only		Cartop	No motors
Morey Pond	Andover	7	Trout Pond		Cartop	
Mount William Pond	Weare	32	Trout Pond		Ramp	No petroleum motors
Mountain Pond	Brookfield	12	Trout Pond	No person shall take brook trout 12 to 16 inches in length. All brook trout 12 to 16 inches shall be immediately released unharmed into the waters from which taken. The daily limit for brook trout shall be 2 fish, of which only one may be over 16 inches. Only single hook artificial lures and flies shall be used and all hooks shall be barbless or have all barbs pinched.	Remote Walk-in	
Mountain Pond	Chatham	83	Trout Pond		Remote Walk-in	No motors
Mountain Pond	Lyman	6	Trout Pond		Remote Walk-in	
Mud Pond	Easton	4	Trout Pond		Remote Walk-in	No motors
Munn Pond	Errol	45	Trout Pond		Remote Walk-in	
Nathan Pond	Dixville	22	Trout Pond		Remote Walk-in	
Newfound Lake	Alexandria, Bridgewater, Bristol, Hebron	4,450	Lake Trout and/or Salmon	The minimum length for lake trout is 15 inches. The area of the lake that lies within 500 feet of the Cockermonth River and Fowler River shall be closed to all fishing from Oct. 16 through Dec. 31. When trolling to take fish: 1) Only one artificial bait, one fly, one tandem fly or one bait shall be used per rod; and, 2) Only one hook with a single hook point shall be used with bait.	Ramp	6 MPH in some areas; Other restrictions
Nubanusit Lake	Hancock, Nelson	722	Lake Trout and/or Salmon	There is no minimum length for brook trout, rainbow trout, brown trout, or their hybrids. Yellow perch cannot be used for bait. From April 1 through September 30, the combined daily limit for lake trout, salmon, brook trout, rainbow trout, brown trout, and their hybrids is 4 fish, of which no more than 2 fish may be lake trout and/or salmon.	Ramp	
Oliverian Pond	Benton	33	Trout Pond		Ramp	No motors
Orange Pond	Orange	24	Trout Pond		Shorebank	No petroleum motors
Ossipee Lake	Freedom, Ossipee	4,024	Lake Trout and/or Salmon	The area of the lake that lies within 500 feet of the Bearcamp River shall be closed to all fishing from Oct. 16 through Dec. 31. When trolling to take fish: 1) Only one artificial bait, one fly, one tandem fly or one bait shall be used per rod; and, 2) Only one hook with a single hook point shall be used with bait.	Ramp	Headway speed in some areas
Peaked Hill Pond	Thornton	15	Trout Pond		Remote Walk-in	No motors
Perch Pond	Campton	45	Trout Pond		Shorebank	
Perry Pond	Pittsburg	12	Trout Pond; Fly-fishing only		Remote Walk-in	
Phillips Pond	Odell	71	Trout Pond; Fly-fishing only		Cartop - subject to gates and bars	
Pike Pond	Stark	14	Trout Pond		Cartop	
Pleasant Lake	New London	602	Trout Pond	Use or possession of rainbow smelt for bait shall be permitted.	Ramp	
Pond of Safety	Randolph	18	Trout Pond		Remote Walk-in	No motors
Profile Lake	Franconia	13	Trout Pond; Fly-fishing only	No person shall take brook trout 12 to 16 inches in length. All brook trout 12 to 16 inches shall be immediately released unharmed. The daily limit for brook trout shall be 2 fish, of which only one may be over 16 inches.	Cartop	
Province Pond	Chatham	10	Trout Pond		Remote Walk-in	No motors
Rand Pond	Goshen	48	Trout Pond		Ramp	10 HP or less

\*More details on restricted bodies of water at [nh.gov/safety/divisions/nhsp/fob/marine-patrol/restricted.html](http://nh.gov/safety/divisions/nhsp/fob/marine-patrol/restricted.html)

# LAKES & PONDS WITH SPECIAL RULES (CONTINUED)

WATERBODY	TOWN(S)	ACRES	WATERBODY DESIGNATION	ADDITIONAL RULES	ACCESS	RESTRICTIONS*
Rocky Pond	Wentworth	20	Trout Pond		Remote Walk-in	
Round Pond	Errol	42	Trout Pond		Cartop	
Round Pond	Pittsburg	59	Trout Pond		Cartop	
Russell Pond	Woodstock	41	Trout Pond		Cartop	No motors
Saco Lake	Carroll	7	Trout Pond; Fly-fishing only		Shorebank	No motors
Saltmarsh Pond	Gilford	40	Trout Pond		Ramp	Electric motors only; no wake
Sand Pond (Echo Lake)	Marlow, Lempster	155	Trout Pond		Ramp	
Sawyer Pond	Livermore	40	Trout Pond		Remote Walk-in	No motors
Sawyer Pond, Little	Livermore	6	Trout Pond		Remote Walk-in	No motors
Scott Bog	Pittsburg	88	Trout Pond; Fly-fishing only		Cartop	No motors
Sessions Pond	Dummer	41	Trout Pond		Remote Walk-in	
Shaw Pond (Shawtown)	Freedom	13	Trout Pond; Fly-fishing only	No person shall take brook trout 12 to 16 inches in length. All brook trout 12 to 16 inches shall be immediately released unharmed. The daily limit for brook trout shall be 2 fish, of which only one may be over 16 inches.	Cartop	No petroleum motors
Shehan Flowage Pond	Clarksville	19	Trout Pond		Remote Walk-in	
Shoal Pond	Lincoln	5	Wild Trout Pond		Remote Walk-in	No motors
Signal Pond	Errol	5	Trout Pond		Remote Walk-in	
Silver Lake	Madison	969	Lake Trout and/or Salmon	When trolling to take fish: 1) Only one artificial bait, one fly, one tandem fly or one bait shall be used per rod; and, 2) Only one hook with a single hook point shall be used with bait.	Ramp	No houseboats
Silver Lake	Nelson, Harrisville	333	Lake Trout and/or Salmon	There is no minimum length for brook trout, rainbow trout, brown trout, or their hybrids. Yellow perch cannot be used for bait. From April 1 through September 30, the combined daily limit for lake trout, salmon, brook trout, rainbow trout, brown trout, and their hybrids is 4 fish, of which no more than 2 fish may be lake trout and/or salmon.	Ramp	Headway speed certain times
Silver Lake	Tilton/Belmont	202		The portion of the lake that lies within 1,000 feet of the Lochmere Dam: Open season April 1 through September 30. Closed to all fishing October 1 through March 31.	Cartop	
Simmons Pond	Warner	22	Trout Pond		Shorebank	
Sky Pond	New Hampton	14	Trout Pond; Fly-fishing only	No person shall take brook trout 12 to 16 inches in length. All brook trout 12 to 16 inches shall be immediately released unharmed. The daily limit for brook trout shall be 2 fish, of which only one may be over 16 inches.	Cartop	No motors
Smith Pond	Washington	29	Trout Pond		Ramp	
Solitude Lake	Newbury	6	Trout Pond		Remote Walk-in	
South Pond	Stark	124		The minimum length for lake trout is 15 inches.	Cartop	
Spectacle Pond	Groton, Hebron	53	Trout Pond		Ramp	No petroleum motors; 10 MPH speed limit
Spofford Lake	Chesterfield	739		1) The waterbody shall be closed to the taking of all fish October 16 through March 31. 2) The open season for taking all species except brook trout, brown trout, rainbow trout, trout hybrids and smelt shall be from April 1 through October 15. 3) The open season for taking brook trout, brown trout, rainbow trout, and trout hybrids shall be the 4th Saturday in April through October 15. 4) Smelt shall be taken by angling only. 5) The open season for taking smelt shall be June 16 through October 15. 6) The daily limit for brook trout, brown trout, rainbow trout, or their hybrids is 2 fish. 7) The minimum length for brook trout, brown trout, rainbow trout, or their hybrids is 15 inches. 8) From April 1 through October 15 no person shall take fish through the ice, from the ice or from any object supported by the ice.	Ramp	40 MPH day, 20 MPH night

\*More details on restricted bodies of water at [nh.gov/safety/divisions/nhsp/fob/marine-patrol/restricted.html](https://nh.gov/safety/divisions/nhsp/fob/marine-patrol/restricted.html)



# LAKES & PONDS WITH SPECIAL RULES (CONTINUED)

WATERBODY	TOWN(S)	ACRES	WATERBODY DESIGNATION	ADDITIONAL RULES	ACCESS	RESTRICTIONS*
Spoonwood Pond	Nelson	159	Trout Pond		Remote Walk-in	No petroleum motors
Squam Lake	Holderness, Center Harbor, Moultonborough, Sandwich	6,791	Lake Trout and/or Salmon	The area of the lake that lies within 500 feet of Barville Brook shall be closed to all fishing from Oct. 16 to Dec. 31. When trolling to take fish: 1) Only one artificial bait, one fly, one tandem fly or one bait shall be used per rod; and, 2) Only one hook with a single hook point shall be used with bait.	Ramp	Speed and other restrictions
Squam Lake, Little	Ashland, Holderness	454	Lake Trout and/or Salmon	When trolling to take fish: 1) Only one artificial bait, one fly, one tandem fly or one bait shall be used per rod; and, 2) Only one hook with a single hook point shall be used with bait.	Ramp	Speed and other restrictions
Stirrup Iron Pond	Salisbury	2	Trout Pond; Fly-fishing only		Shorebank	
Stone Pond	Marlborough, Dublin	79	Trout Pond		Ramp	
Stonehouse Pond	Barrington	13	Trout Pond; Fly-fishing only		Cartop	No petroleum motors
Stratford Bog Pond	Stratford	33	Trout Pond		Cartop	No petroleum motors
Stub Hill Pond	Pittsburg	3	Trout Pond		Remote Walk-in	
Success Pond	Success	282	Trout Pond		Ramp	
Sunapee Lake	New London, Newbury, Sunapee	4,136	Lake Trout and/or Salmon	1) The area of the lake that lies within 500 feet of Otter Brook shall be closed to all fishing from Oct. 16 to Dec. 31. 2) All tributaries will be closed to fishing Oct. 16 to May 31. When trolling to take fish: 1) Only one artificial bait, one fly, one tandem fly or one bait shall be used per rod; and, 2) Only one hook with a single hook point shall be used with bait.	Ramp	Speed and other restrictions
Swain Pond	Wentworth	6	Trout Pond		Cartop	
Swanzy Lake	Swanzy	108	Trout Pond		Cartop	
Sweat Pond	Errol	10	Trout Pond		Remote Walk-in	
Terrill Pond (West Branch Pond)	Pittsburg	18	Trout Pond; Fly-fishing only		Cartop	
Three Ponds, Lower	Ellsworth, Warren	2	Trout Pond		Remote Walk-in	No motors
Three Ponds, Middle	Ellsworth, Warren	13	Trout Pond		Remote Walk-in	No motors
Three Ponds, Upper	Ellsworth, Warren	11	Trout Pond		Remote Walk-in	No motors
Trio Pond, Lower 1 & 2	Odell	69	Trout Pond		Remote Walk-in	
Trio Pond, Upper 3	Odell	20	Trout Pond; Fly-fishing only		Remote Walk-in	
Trout Pond	Lyme	12	Trout Pond		Shorebank	
Trout Pond (Stacy Pond)	Freedom	21	Trout Pond		Remote Walk-in	
Unknown Pond	Pittsburg	3	Trout Pond; Fly-fishing only		Remote Walk-in	
Wachipauka Pond (Meador Pond)	Warren	28	Trout Pond		Remote Walk-in	No motors
Warren Lake	Alstead	186		From Jan. 1 to March 31, the taking of black bass from 15 to 20 inches in length is prohibited. The daily limit of black bass is 3 fish, of which only one may be longer than 20 inches.	Ramp	
Waukeena Lake (Pleasant Pond)	Danbury	56	Trout Pond		Ramp	No petroleum motors
Waukewan, Lake (Measley Pond)	Meredith, New Hampton	927		The daily limit for brook trout, rainbow trout, brown trout, and their hybrids shall be 2 fish.	Ramp	Restrictions near intake
Whitcomb Pond	Odell	19	Trout Pond		Remote Walk-in	
White Pond	Ossipee	46	Trout Pond; Fly-fishing only		Ramp	6 MPH speed limit
White Pond	Wilmot	11	Trout Pond		Shorebank	No motors
Whittemore Lake	Bennington, Greenfield	41	Trout Pond		Ramp	No motors
Willard Pond	Antrim	110	Trout Pond; Fly-fishing only		Ramp	No petroleum motors

\*More details on restricted bodies of water at [nh.gov/safety/divisions/nhsp/fob/marine-patrol/restricted.html](http://nh.gov/safety/divisions/nhsp/fob/marine-patrol/restricted.html)

## LAKES & PONDS WITH SPECIAL RULES (CONTINUED)

WATERBODY	TOWN(S)	ACRES	WATERBODY DESIGNATION	ADDITIONAL RULES	ACCESS	RESTRICTIONS*
Winnepesaukee, Lake	Alton, Gilford, Laconia, Meredith, Moultonborough, Tuftonboro, Wolfeboro	44,424	Lake Trout and/or Salmon	<p>The areas of the lake that lie within 500 feet of Gunstock River, Poor Farm Brook, Melvin River, Merymeeting River, Mink Brook, and Smith River, and the lake area of Lake Winnepesaukee 500 feet on either side of the Main Street bridge in Wolfeboro, are closed to all fishing from Oct. 16 to Dec. 31.</p> <p>The following two areas of the lake are closed to all fishing October 1 through March 31:</p> <ol style="list-style-type: none"> <li>1) the area of Paugus Bay which lies between the railroad trestle at its south end and the Lakeport Dam in Laconia;</li> <li>2) the area of open water (the area not normally covered by ice in winter) at Weirs Channel. <p>When trolling to take fish:</p> <ol style="list-style-type: none"> <li>1) Only one artificial bait, one fly, one tandem fly or one bait shall be used per rod; and,</li> <li>2) Only one hook with a single hook point shall be used with bait.</li> </ol> </li></ol>	Ramp	No wake area and speed restrictions
Winnisquam Lake	Belmont, Laconia, Meredith, Sanbornton, Tilton	4,214	Lake Trout and/or Salmon	<p>The area of the lake that lies within 500 feet of the Winnepesaukee River shall be closed to all fishing from Oct. 16 to Dec. 31.</p> <p>When trolling to take fish:</p> <ol style="list-style-type: none"> <li>1) Only one artificial bait, one fly, one tandem fly or one bait shall be used per rod; and,</li> <li>2) Only one hook with a single hook point shall be used with bait.</li> </ol>	Ramp	Speed and other restrictions
Winona Lake	Center Harbor, Meredith, New Hampton	148		The daily limit for brook trout, rainbow trout, brown trout, and their hybrids shall be 2 fish.	Ramp	
Wright Pond	Pittsburg	5	Trout Pond; Fly-fishing only		Remote Walk-in	

\*More details on restricted bodies of water at [nh.gov/safety/divisions/nhsp/fob/marine-patrol/restricted.html](http://nh.gov/safety/divisions/nhsp/fob/marine-patrol/restricted.html)

## LEARNING ABOUT HEALTHY AQUATIC ECOSYSTEMS

The N.H. Fish and Game Department's Watershed Education Program allows students to become citizen scientists who study and work to improve aquatic habitats in their communities.

### Monitoring Water Quality

Students start by visiting a local waterbody to collect water samples and measure dissolved oxygen, pH, temperature, turbidity, and conductivity. They also collect and classify macroinvertebrates. They use this chemical and biological data to determine the water quality.

Students then explore their watershed by using Geographic Information Systems (GIS)

maps. They import local data about their own watersheds, use Global Positioning System (GPS) units to locate their water quality testing sites, post water quality and macroinvertebrate data on the maps, and share that data with their local community and other watershed schools. In the process, they begin to see how human activities may impact the watershed.



### Trout in the Classroom

As an extension of studying the river, students can raise trout eggs in the classroom through the **Trout in the Classroom** program. Or they can study fish behavior with a warmwater fish tank.

The Watershed Education Program also allows students to become fisheries biologists for a day to study the aquatic resources of a river. Working with N.H. Fish and Game staff, students experience fish sampling techniques; perform a habitat assessment; and collect, identify, and measure freshwater fish.

### Learn More

For more information on signing up for the Watershed Education Program at your school, contact Judy Tumosa at (603) 271-0456 or [judy.l.tumosa@wildlife.nh.gov](mailto:judy.l.tumosa@wildlife.nh.gov)



# REEL FUN

## GO FISH WITH THE KIDS!



**Fishing is a great way to reconnect with friends and family.** Children under age 16 don't need a license to fish, so bring them along for a day of fresh air, sunshine and family fun! An inexpensive rod-and-reel, a colorful, kid-friendly tackle box for toting hooks, sinkers, bobbers, lures, and a pair of pliers is all you need!

### Catch a Smile

Plan ahead and let the kids help decide where to go and what to bring. Dress for the weather and don't forget snacks and drinks, a hat, sunglasses and sunscreen. It's a good idea to keep the first few trips short and let interest and enthusiasm grow.

For most kids, it's important to make a catch that first time out. You can help by seeking out places that are packed with panfish, like crappies and sunfish. Check our Take Me Fishing Guides for ideas on where to go and what kinds of fish you might catch. Don't forget the camera — you'll definitely want to have a picture of that first-fish smile!

### "Unplug" from the Wired World

Being outside in the fresh air and sunshine is the most obvious benefit of learning how to fish, but taking a break from electronic devices

is an added bonus! Fishing doesn't have to be difficult or far from home. The important thing is to go fishing as a family and have fun!

### Enjoy Free Fishing Days

Take advantage of New Hampshire's annual Free Fishing Days on January 16 and June 5, 2021. You can fish any fresh or salt water in N.H. without a license on those days. Applies to both residents and non-residents. All other fishing regulations apply. Note that all anglers participating in fishing tournaments on Free Fishing Days must have a license.

# "take me fishing"™

### Find Fishing Close to Home

For fishing tips, species identification and places to cast your line in N.H., consult our Shoreline Fishing Guides to the Manchester/Nashua Region, the Concord/Capital Region, the Great North Woods, the Southwest Region, Seacoast N.H., the Lakes Region, Southeastern N.H. and the Upper Valley!

Visit [fishnh.com/fishing/publications.html](http://fishnh.com/fishing/publications.html) or call (603) 271-2501.



# RIVERS & STREAMS: GENERAL AND SPECIAL RULES

## General Fishing Rules

*General Fishing Rules for Rivers and Streams* apply to most rivers and streams in the state. Follow the seasons, bag limits, length limits, and important notes listed with each species in the chart.

## Rivers & Streams with Special Rules

This section has information on rivers and streams with Special Rules. These rivers and streams have rules that may differ from, or be in addition to, *General Fishing Rules for Rivers and Streams*.

**In general, rivers and streams are CLOSED TO ALL FISHING from Oct. 16 through Dec. 31, unless specified for a particular river in the *Rivers and Streams with Special Rules* section.**

**Fishing through the ice, from the ice, or from any object supported by the ice is prohibited unless specified for a particular river in the *Rivers and Streams with Special Rules* section.**

**The taking of brook trout, lake trout, trout hybrids and salmon between 2 hours after sunset and 1 hour before sunrise is prohibited, unless otherwise specified.**

Turn to the *Rivers & Streams With Special Rules* section on pages 23–25. If you find the waterbody you intend to fish, look immediately beside it for the rules on season dates, bag limits, length limits and methods of taking.

In instances where special limits, seasons, and methods of taking are not noted for a particular river or stream, the *General Fishing Rules for Rivers and Streams* apply.

**Interstate Waters:** See pages 38–39.

## GENERAL FISHING RULES FOR RIVERS & STREAMS

SPECIES	SEASON	BAG LIMITS & MINIMUM LENGTHS	IMPORTANT NOTES
<b>Black Bass</b> (Smallmouth Bass & Largemouth Bass)	January 1 to March 31	2 fish daily limit; only 1 fish >16 inches.	
	April 1 to May 14	2 fish daily limit.	
	May 15 to June 15	Catch and release only.	Artificial lures and flies only.
	June 16 to June 30	2 fish daily limit.	
	July 1 to October 15	5 fish daily limit.	
<b>Brook Trout, Brown Trout, Rainbow Trout and their hybrids</b>	January 1 to October 15	5 fish or 5 pounds daily limit, whichever is reached first; no length limit.	"Brook trout" include Brook, Brown, Rainbow, Golden, Loch Leven trout and all their hybrids.
<b>Lake Trout</b>	January 1 to September 30	2 fish daily limit for lake trout and salmon combined (2 lake trout, 2 salmon, or 1 of each); minimum length 18 inches.	Combined daily limit applies only during salmon season, April 1 – Sept. 30.
<b>Landlocked Salmon</b>	April 1 to September 30	2 fish daily limit for lake trout and salmon combined (2 lake trout, 2 salmon, or 1 of each); minimum length 15 inches.	Salmon may not be taken in any water body after September 30 and before April 1. Salmon may not be taken through the ice.
<b>Chain Pickerel</b>	January 1 to October 15	10 fish daily limit; no length or weight limits.	See illustration on page 34.
<b>Northern Pike</b>	January 1 to October 15	1 fish daily limit; minimum length 28 inches.	See illustration on page 34.
<b>Walleye</b>	January 1 to October 15	2 fish daily limit; minimum length 18 inches; no weight limit.	Special regulations in the Connecticut River — see page 39.
<b>White &amp; Yellow Perch, Black Crappie, Sunfish, Horned Pout</b>	January 1 to October 15	25 fish each species daily limit; no more than 50 fish total combined; no length or weight limits.	
<b>Rock Bass</b>	January 1 to October 15	No daily limit; no length or weight limits.	
<b>Carp</b>	January 1 to October 15	No daily limit; no length or weight limits.	Carp may be taken in the Connecticut River, Merrimack River, and Mascoma Lake by bow and arrow with cord attached.
<b>Cusk</b>	January 1 to October 15	No daily limit; no length or weight limits.	
<b>River Herring</b>	No open season.		
<b>American Shad</b>	January 1 to October 15	Catch and release only.	
<b>Lake Whitefish</b>	January 1 to October 15	2 fish daily limit; no length or weight limits.	
<b>Round Whitefish</b>	No open season.		All Round Whitefish must be immediately released.
<b>Smelt</b>	For smelt angling rules and waterbodies open to the taking of this species by dip net, see page 33.		
<b>Suckers</b>	January 1 to October 15	No daily limits; no length or weight limits.	Suckers may be taken for personal use with two traps, not more than 50 inches long, 30 inches wide, with an opening no smaller than 3½ inches in diameter. All traps or holding boxes will have the name and address of the owner.
	March 1 to May 31	No daily limits; no length or weight limits.	Suckers may be taken by hand dip nets not over 18 inches in diameter, drop nets not over 48 inches in diameter, spears or bow and arrow with cord attached. Suckers taken by spear or bow and arrow must not be left in, or adjacent to, the body of water.



# RIVERS & STREAMS WITH SPECIAL RULES

WATERBODY	TOWN(S)	SECTION	SPECIAL RULES: For species not listed under this section, please refer to the General Regulations section for Rivers and Streams.
Alder Brook	Second College Grant	All sections	Jan. 1 - Labor Day season. Catch-and-release, single barbless hook artificial lures/flyes. Managed for wild trout.
Ammonoosuc River	Littleton to Bath	Apthorp Dam in Littleton to confluence with Connecticut River in Bath	Brown trout may be taken any time of day or night during the open season.
Androscoggin River	Errol	Errol Dam to the markers at the dead water at Bragg Bay	Fly-fishing only. Daily limit for brook trout 2 fish; minimum length 12 inches
Androscoggin River	Dummer	Dummer-Cambridge town line to Pontook Dam	No closed season for all species except salmon. Daily limit of 2 brook trout through the ice.
Androscoggin River	Dummer to Berlin	Wheeler Bay in Dummer boundary line at 44° 36.9011'N 71° 13.3816'W to 44° 36.9341'N 71°13.4449'W using WGS84 map datum to Sawmill Dam in Berlin	Brown trout may be taken any time of day or night during the open season.
Androscoggin River	Berlin to Shelburne	Sawmill Dam in Berlin to ME/NH boundary	No closed season for all species. Single barbless hook, artificial lures/flyes. Catch-and-release all species.
Ashuelot River	Surry	Surry Mountain Reservoir	No closed season for all species. Daily limit of 2 brook trout through the ice.
Ashuelot River, South Branch	Troy to Swanzey	Marlborough Road bridge in Troy to Old Richmond Road bridge in East Swanzey	Fly-fishing only. Daily limit for brook trout 2 fish; minimum length 12 inches.
Bellamy River	Madbury	Bellamy Reservoir	No closed season for all species. Daily limit of 2 brook trout through the ice.
Blackwater River	Salisbury to Andover	The Bays and Cilleyville Bog	No closed season for all species. Daily limit of 2 brook trout through the ice.
Carroll Stream	Whitefield to Carroll	Upstream of its confluence with Airport Pond in Whitefield	Jan. 1 - Labor Day season. Catch-and-release, single barbless hook artificial lures/flyes. Managed for wild trout.
Cocheco River	Rochester to Dover	Watson Road dam downstream to head of tide	No closed season for all species. Oct. 16 to 4th Sat. in April - Catch-and-release, single barbless hook, artificial lures/flyes. 4th Sat. in April to Oct. 15 - Daily limit for brook trout 5 fish or 5 lbs., all legal methods.
Connecticut River	Pittsburg	Dam at Second CT Lake to upstream side of logging bridge on Magalloway Road	Fly-fishing only, catch-and-release for all species.
Connecticut River	Pittsburg	Magalloway Rd bridge to inlet at Green's Point on First CT Lake	Fly-fishing only. Daily limit for brook trout is 2 fish.
Connecticut River	Pittsburg	First CT Lake dam to the signs on Lake Francis	Fly-fishing only. Daily limit for brook trout is 2 fish; minimum length 12 inches.
Connecticut River	Pittsburg	Murphy Dam to NH/VT border	Jan. 1 to March 31: Catch-and-release, single barbless hook, artificial lures/flyes. April 1 to Oct. 15: Daily limit for brook trout 5 fish or 5 lbs. All legal methods.
Connecticut River	See also NH-VT Interstate Rules on page 39.		
Contoocook River	Rindge to Henniker	Contoocook Lake downstream to area marked with signs and wire in West Henniker	No closed season for all species. Daily limit of 2 brook trout through the ice.
Contoocook River	Henniker	From 2,500 ft. above former paper mill dam in West Henniker, marked by signs and wire, upstream 1 mile to a point marked by signs and wire	Jan. 1 through Nov. 30 season. Single hook artificial lures/flyes. Daily limit for brook trout is 2 fish; minimum length 12 inches.
Contoocook River	Henniker to Concord	From 2,500 ft. above former paper mill dam in West Henniker, to confluence with Merrimack River	No closed season for all species. Daily limit of 2 brook trout through the ice.
Dead Diamond River	Second College Grant	From confluence of Swift Diamond River downstream to Magalloway River	Jan. 1 through Sept. 30 season. Single barbless hook, artificial lures/flyes. Catch-and-release for trout. No limits for black bass
Dead Diamond River	Second College Grant	Headwaters to confluence with Swift Diamond River	Jan. 1 to Sept. 30 season. Daily limit of 5 brook trout or 5 lbs. All legal methods.
Ellis River	Jackson	From the covered bridge in Jackson to Iron Railroad Bridge in Glen	Fly-fishing only. Daily limit for brook trout is 2 fish
Exeter River	Brentwood to Exeter	Downstream side of the Cross Road bridge to Route 111 bridge	No closed season for all species. Oct. 16 to 4th Saturday in April: Catch-and-release, single barbless hook, artificial lures/flyes. 4th Saturday in April through Oct. 15: Daily limit for brook trout 5 fish or 5 lbs. All legal methods.
Exeter River	Sandown to Exeter	From Route 121-A to the Pickpocket Dam and from Route 111 to the Squamscott River	No closed season for all species. Daily limit of 2 brook trout through the ice. Closed to all fishing from the upstream side of the Pickpocket Dam and fishway including a 50 foot radius in front of the fishway on the upstream side to the downstream side of the Cross Road Bridge in the towns of Brentwood and Exeter
Flints Brook	Hollis	All sections	Jan. 1 - Labor Day season. Catch-and-release, single barbless hook artificial lures/flyes. Managed for wild trout.

# RIVERS & STREAMS WITH SPECIAL RULES (CONTINUED)

WATERBODY	TOWN(S)	SECTION	SPECIAL RULES:
			For species not listed under this section, please refer to the General Regulations section for Rivers and Streams.
Gulf Brook	Chesterfield	All sections	Jan. 1 - Labor Day season. Catch-and-release, single barbless hook artificial lures/flyes. Managed for wild trout.
Isinglass River	Barrington to Rochester	From Route 125 bridge downstream to confluence with Cocheco River	No closed season for all species. Oct. 16 to 4th Saturday in April: Catch-and-release, single barbless hook, artificial lures/flyes. 4th Saturday in April through Oct. 15: Daily limit for brook trout 5 fish or 5 lbs. All legal methods.
Lamb Valley Brook	Second College Grant	All sections	Jan. 1 - Labor Day season. Catch-and-release, single barbless hook artificial lures/flyes. Managed for wild trout.
Lamprey River	Raymond to Durham	Raymond/Deerfield town line to Wiswall Dam	No closed season for all species. Daily limit of 2 brook trout through the ice.
Lamprey River	Durham	Wiswall Dam to first railroad trestle downstream of Packers Falls	No closed season for all species. Oct. 16 to 4th Saturday in April: Catch-and-release, single barbless hook, artificial lures/flyes. 4th Saturday in April through Oct. 15: Daily limit for brook trout 5 fish or 5 lbs. All legal methods.
Lamprey River	Durham	Wiswall Dam area	Closed to all fishing 200 feet below Wiswall Dam between April 1 and July 31. Closed to all fishing in the waters 50 feet above the Wiswall Dam year round.
Long Mountain Brook	Odell to Stratford	All sections	Jan. 1 - Labor Day season. Catch-and-release, single barbless hook artificial lures/flyes. Managed for wild trout.
Loomis Valley Brook	Second College Grant	All sections	Jan. 1 - Labor Day season. Catch-and-release, single barbless hook artificial lures/flyes. Managed for wild trout.
Lost River	Woodstock	From 100 ft. above parking area entrance bridge to 100 ft below last footbridge in Lost River Gorge	Closed to all fishing
Lyman Brook	Columbia	From headwaters to the upper bridge on Meriden Hill Road in Columbia	Jan. 1 - Labor Day season. Catch-and-release, single barbless hook artificial lures/flyes. Managed for wild trout.
Magalloway River	Second College Grant, Wentworth's Location	All NH sections downstream to the markers at the confluence with Sturtevant Stream at 44°50.41638'N-71°03.03498'W using WGS84 map datum.	Jan. 1 through Sept. 30. Single barbless hook, artificial lures/flyes. Catch-and-release for trout. No limits on black bass.
Magalloway River	Wentworth's Location, Errol	From the markers at the confluence with Sturtevant Stream at 44°50.41638'N-71°03.03498'W to the markers at confluence of Umbagog Lake at 44°47.73612'N-71°03.70758'W using WGS84 map datum.	Jan. 1 through May 31 & day after Labor Day through September 30. Single barbless hook, artificial lures/flyes. Catch-and-release for trout. No limits on black bass. Fishing from the ice prohibited.  June 1 through Labor Day. Single hook artificial lures/flyes, only a single hook point shall be used with bait, all hooks shall be barbless or have barbs pinched, use or possession of live fish for bait shall be prohibited. Catch and release for trout. No limits on black bass. Closed to all fishing Oct. 1 - Dec. 31.
Mascoma River	Enfield to Lebanon	From Route 4 bridge south of Mascoma Lake Dam downstream to the covered bridge.	Fly-fishing only. Daily limit for brook trout is 2 fish.
Meadow Brook	Sharon	All sections	Jan. 1 - Labor Day season. Catch-and-release, single barbless hook artificial lures/flyes. Managed for wild trout.
Merrimack River	Bow	Garvins Falls Dam from canal wall, including fish bypass plunge pool, to a point 300 feet downstream to main river.	Closed to all fishing.
Merrimack River	Franklin to Mass. border (except closed sections)	All sections	No closed season for all species except salmon. Daily limit of 2 brook trout through the ice.
Merrimack River	Manchester	Upstream side of Amoskeag Dam to upstream side of Amoskeag Bridge, and between west bank of river and island adjacent to powerhouse for 500 feet downstream of fishway entrance.	Closed to all fishing.
Merrymeeting River	New Durham	Merrymeeting Lake Dam to 200 ft below Powder Mill Hatchery	Closed to all fishing
Merrymeeting River	New Durham to Alton	From 200 ft. below Powder Mill Hatchery to lower dam at Alton	No closed season for all species except salmon. Daily limit of 2 brook trout through the ice
Merrymeeting River	Alton	From lower dam at Alton to Route 11 bridge at Alton Bay	Jan. 1 - June 15 and Oct. 1-31 fly-fishing only, barbless hooks, catch-and-release. June 16 - Sept. 30 combined daily limit for trout and salmon is 2 fish, minimum length 15 inches, minimum length for lake trout 18 inches
Mohawk River, West Branch	Colebrook	All sections	Jan. 1 - Labor Day season. Catch-and-release, single barbless hook artificial lures/flyes. Managed for wild trout.
Nashua River	Hollis to Nashua	From MA/NH border to confluence with Merrimack River	No closed season for all species except salmon. Daily limit of 2 brook trout through the ice



# RIVERS & STREAMS WITH SPECIAL RULES (CONTINUED)

WATERBODY	TOWN(S)	SECTION	<b>SPECIAL RULES:</b> For species not listed under this section, please refer to the General Regulations section for Rivers and Streams.
Nashua River	Nashua	Jackson Mills Dam 200 ft. above to 200 ft. below	Closed to all fishing
Nashua River	Nashua	Mines Falls Dam to 200 ft. below	Closed to all fishing
Newfound River	Bristol	Area between West Shore Road and dam adjacent to Crescent St	Jan. 1 - October 31 season, fly-fishing only. Jan. 1 - March 31: daily limit for trout is 2 fish and all salmon immediately released; April 1 - Sept. 30: combined daily limit for trout/salmon is 2 fish, minimum length for salmon and lake trout is 15 inches. Oct. 1-31: barbless hooks only, catch-and-release all fish
Pemigewasset River	Bristol	From Route 104 bridge to Ayers Island Dam	No closed season for all species except salmon. Daily limit of 2 brook trout through the ice
Pemigewasset River	Bristol	From Ayers Island Dam 300 ft. downstream	Closed to all fishing
Pemigewasset River	Bristol to Franklin	From 300 ft. below Ayers Island Dam to the Eastman Falls Dam in Franklin	No closed season for all species except salmon. Daily limit of 2 brook trout through the ice
Pemigewasset River	Franklin	From Eastman Falls Dam 150 ft. downstream	Closed to all fishing
Pemigewasset River	Franklin	From 150 ft. below Eastman Falls Dam to the confluence of Winnepesaukee River	No closed season for all species except salmon. Daily limit of 2 brook trout through the ice
Perry Stream	Pittsburg	Happy Corner Bridge to Connecticut River	Fly-fishing only. Daily limit for brook trout is 2 fish
Piscataquog River	Goffstown	Howe Bridge to Glen Lake	No closed season for all species. Daily limit of 2 brook trout through the ice
Piscataquog River, South Branch	New Boston	From 300 ft. upstream of the bridge located at 42° 57.447'N 71° 42.494'W using WGS84 map datum on Lyndeboro Road downstream to the first bridge on Route 13 in New Boston	October 16 - June 15: Catch-and-release, single barbless hook artificial lures/flyes. June 16 - October 15: Daily limit for brook trout is 5 fish or 5 lbs.
Pond Brook	Odell to Stratford	All sections	Jan. 1 - Labor Day season. Catch-and-release, single barbless hook artificial lures/flyes. Managed for wild trout.
Powwow River	Kingston	All sections	No closed season for all species. Daily limit of 2 brook trout through the ice.
Saco River	Conway	Lucy Brook downstream to confluence with Artist Falls Brook	Fly-fishing only. Daily limit for brook trout is 2 fish.
Sand Brook	Hillsborough	All sections	Jan. 1 - Labor Day season. Catch-and-release, single barbless hook artificial lures/flyes. Managed for wild trout.
Soucook River	Loudon to Pembroke	From Loudon Village Dam to confluence with the Merrimack River	No closed season for all species. Daily limit of 2 brook trout through the ice.
Souhegan River	Greenville to Wilton	From 300 ft upstream of green bridge on Old Wilton Road in Greenville to 300 ft downstream of Route 31 bridge in Wilton	October 16 - June 15: Catch-and-release, single barbless hook artificial lures/flyes. June 16 - October 15: Daily limit for brook trout is 5 fish or 5 lbs.
Sucker Brook	Auburn	From dam in Auburn Village downstream to Lake Massabesic	No closed season for all species. Daily limit of 2 brook trout through the ice
Sugar River	Newport	Rte. 11/103 Bridge to the so-called Oak Street Bridge	Jan. 1 - Nov. 30 season. Fly-fishing only. Daily limit for brook trout is 2 fish.
Suncook River	Barnstead to Allenstown/Pembroke	From Route 126 bridge in Barnstead downstream to confluence with the Merrimack River	No closed season for all species. Daily limit of 2 brook trout through the ice.
Swift River	Sandwich to Tamworth	From Route 113A bridge downstream to Route 113 bridge	Fly-fishing only. Daily limit for brook trout is 2 fish.
Swift Diamond River	Dixville to Second College Grant	Headwaters downstream to confluence with Dead Diamond River	Jan. 1 - Sept. 30 season
Taylor River	Hampton Falls	West of Route 95	No closed season for all species. Daily limit of 2 brook trout through the ice
Turkey River	Concord	All sections	No closed season for all species. Daily limit of 2 brook trout through the ice
Winnepesaukee River	Laconia to Tilton	From dam at Paugus Bay to 500 ft downstream and Messer Street bridge downstream to Dixon Point; and from old Union Bridge abutment in Tilton/Belmont downstream to a point 1000 ft below Lochmere Dam	April 1 - Sept. 30 season
Winnepesaukee River	Franklin	From Franklin Falls Hydro Dam to confluence with Pemigewasset River	No closed season for all species except salmon. Daily limit of 2 brook trout through the ice
Witches Spring Brook	Hollis	All sections	Jan. 1 - Labor Day season. Catch-and-release, single barbless hook artificial lures/flyes. Managed for wild trout.

# INLAND FISHERIES DIVISION

The N.H. Fish and Game Department's Inland Fisheries Division is responsible for all fresh-water fish within both state and interstate waters. Fisheries biologists and fish culturists work to protect and restore fish resources and aquatic habitat and to provide New Hampshire anglers with diverse fishing opportunities.

## What we do...for you!

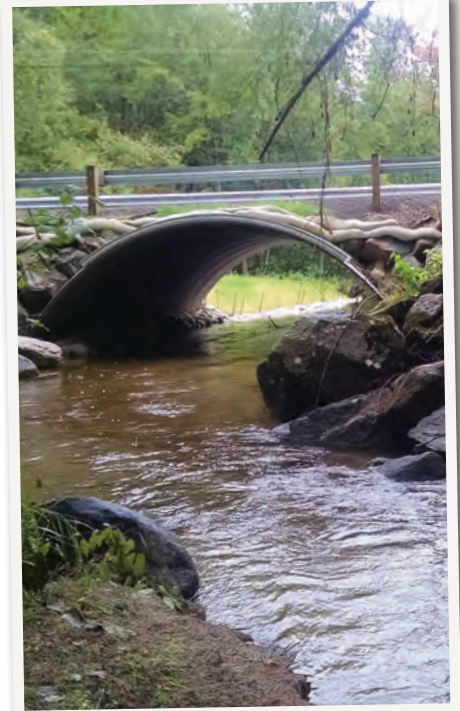
- Operate and maintain six hatcheries that raise and stock nearly 1 million trout and salmon annually.
- Provide diverse, high-quality fishing opportunities for anglers to enjoy.
- Monitor fish populations in numerous rivers, streams, lakes, and ponds.
- Restore populations of migratory species, including river herring, American shad, and American eels.
- Conserve, improve, and restore fisheries habitat in New Hampshire.
- Provide fisheries expertise and technical assistance to many organizations for the benefits of maintaining, improving, or restoring habitat and fish populations.



*Fish biologists use telemetry to measure the movement of bass following fishing tournaments.*



*American shad are transported upriver in the Merrimack in an effort to restore their population.*



*A wildlife-friendly arched culvert reconnects fish habitat on Falls Brook in Swanzy.*



## Visit a State Fish Hatchery

New Hampshire's Fish and Game fish hatcheries are a great place to learn about how fish are hatched and reared. These facilities raise nearly a million trout each year! Hatcheries are open year round, from 8:00 a.m. to 4:00 p.m. Outdoor fish viewing is available throughout the year. Guided hatchery tours are available by reservation. You'll enjoy meeting our dedicated, hardworking hatchery staff, who not only understand the technical challenges of raising fish... many of them love to fish themselves!

### Berlin Fish Hatchery

RR 3 Box 3783  
(Off Route 110) York Pond Road  
Berlin, NH 03570  
(603) 449-3412

### Twin Mountain Fish Hatchery

1450 Route 3 North  
Carroll, NH 03598  
(603) 846-5429

### Warren Fish Hatchery

23 Fish Hatchery Road  
Warren, NH 03279  
(603) 764-8593

### New Hampton Fish Hatchery

204 Main St.  
New Hampton, NH 03256  
(603) 744-3709

### Powder Mill Fish Hatchery

288 Merrymeeting Road  
New Durham, NH 03855  
(603) 859-2041

### Milford Fish Hatchery

386 North River Road  
Milford, NH 03055  
(603) 673-1416



# N.H. RECORD AND TROPHY FISH

## NEW HAMPSHIRE STATE RECORD FRESHWATER FISH

SPECIES	LENGTH	WEIGHT	WATERBODY	TOWN	DATE	ANGLER	STATE
American Eel	44.50"	8 lbs.	Crystal Lake	Eaton	7/6/1975	Michael Hansharak	NH
Black Crappie	17.00"	2 lbs. 15.84 oz.	Great East Lake	Wakefield	5/3/2016	Brian O'Day	NH
Bluegill	11.25"	2 lbs. 0.64 oz.	Goodwins Pond	Acworth	6/18/1992	Justin S. Therieau	NH
Bowfin	28.00"	8 lbs. 13 oz.	Wilson Pond	Swanzy	8/24/1994	Kenneth L'Abbe	NH
Brook Trout	25.50"	9 lbs.	Pleasant Lake	New London	5/8/1911	A. Val Woodruff	NH
Brown Bullhead	17.95"	3 lbs. 4.8 oz.	Merrimack River	Merrimack	8/06/2005	Donald Robbins	NH
Brown Trout	32.50"	16 lbs. 6 oz.	Connecticut River	Pittsburg	7/4/1975	Ken Reed, Jr.	CT
Carp (Bow Harvested)	40.50"	41 lbs. 0.04 oz.	Connecticut River	Hinsdale	6/2/2013	Kevin Martin	NH
Carp	37.00"	35 lbs. 13.12 oz.	Merrimack River	Manchester	5/16/2015	Donald St. Lawrence	NH
Chain Pickerel	26.00"	8 lbs.	Plummer Lake	Sanbornton	4/24/1966	Carroll R. Akeley	MA
Channel Catfish	31.30"	15 lbs. 5.28 oz.	Connecticut River	Chesterfield	8/29/2020	Matthew Smith	NH
Cusk	34.50"	12 lbs. 3.52 oz.	Lake Winnepesaukee	Gilford	3/13/2007	Ken Cayer	NH
Fallfish	20.75"	3 lbs. 8.96 oz.	Lake Winnepesaukee	Gilford	7/12/1991	John Conti	MA
Lake Trout	42.125"	37 lbs. 10.4 oz.	Big Diamond Pond	Stewartstown	2/25/2020	Thomas Knight	NH
Lake Whitefish	21.75"	5 lbs. 1 oz.	Lake Winnepesaukee	Alton	8/23/1974	Paul E. Littlefield	NH
Landlocked Salmon	34.50"	18 lbs. 8 oz.	Pleasant Lake	New London	8/31/1942	Mrs. Letty M. Clark	NH
	36.00"	18 lbs. 8 oz.	Pleasant Lake	New London	8/30/1914	Mr. P.H. Killelea	MA
Largemouth Bass	25.80"	10 lbs. 8 oz.	Lake Potanipo	Brookline	5/1967	G. Bullpitt	NH
Northern Pike	44.5"	26 lbs. 9.44 oz.	Moore Reservoir	Dalton	2/16/2013	Kevin Phelps	NH
Pumpkinseed	10.50"	1 lb., 1.76 oz.	Lake Winnepesaukee	Moultonborough	1/7/2017	Michael Steffen	NH
Rainbow Trout	35.50"	15 lbs. 7.2 oz.	Pemigewasset River	Bristol	9/16/1996	Lance King	NH
Rock Bass	13.50"	1 lb. 8 oz.	Island Pond	Stoddard	9/18/1982	Linc Chamberland	CT
Round Whitefish	18.00"	1 lb. 11.68 oz.	Newfound Lake	Bristol	2/05/2005	Marty Martin	NH
Smallmouth Bass	23.25"	7 lbs. 14.5 oz.	Goose Pond	Canaan	8/1970	Francis H. Lord	MA
Splake Trout	26.88"	9 lbs.	Crystal Lake	Eaton	2/20/1980	Thomas Barbour	NH
Sunapee Trout	33.00"	11 lbs. 8 oz.	Sunapee Lake	Sunapee	10/2/1954	Ernest Theoharris	NH
Tiger Muskellunge	35.50"	11 lbs. 11.68 oz.	Connecticut River	W. Lebanon	6/27/1982	Brian Patch	NH
Tiger Trout	20.00"	3 lbs. 8.64 oz.	Willard Pond	Antrim	7/6/2011	Molly Metivier	NH
Walleye	34.00"	12 lbs. 8.8 oz.	Connecticut River	Wells River, VT	5/4/1992	Anthony Bartolini	NH
White Catfish	23.00"	5 lbs. 11 oz.	Big Cub Pond	Danville	8/4/1996	Zachary Cross	NH
White Perch	17.20"	3 lbs. 11.5 oz.	Lake Winnepesaukee	Moultonborough	12/29/1986	John J. Ziolkowski	CT
White Sucker	22.50"	4 lbs. 13.28 oz.	Pawtuckaway Lake	Nottingham	4/16/2014	Jooson Kim	NH
Yellow Bullhead	16.00"	2 lbs. 8 oz.	Pecknolds Pond	Chester	8/1980	Gerald Menard	NH
Yellow Perch	15.50"	2 lbs. 6 oz.	Head's Pond	Hooksett	3/4/1969	R. Hebert	NH

### Trophy Fish Program

New Hampshire's Trophy Fish Program gives anglers of all ages recognition for their biggest catches, while giving biologists important information on the fisheries over time. There are awards for both kept and released fish in 23 freshwater species and 7 saltwater species categories.

All qualifying entrants receive a "Trophy Fish" shoulder patch for submitting their catch information. Each year, the person catching the heaviest fish or releasing the longest fish in a particular species category receives a certificate suitable for framing. All ages and all legal methods of angling are represented. Your trophy may qualify for a state record; see list above.

Check [fishnh.com](http://fishnh.com) for N.H. trophy fish rules, minimum weights/lengths and entry forms.

*Thomas Knight, of Meredith, New Hampshire, caught a lake trout that weighed in at 37.65 pounds, easily breaking the state record that was more than 60 years old.*



# BOATING IN N.H.

## New Hampshire is a boater's paradise!

You're never more than a short drive away from a boatable lake, pond or river in the Granite State. There are more than 400 public federal and state-owned launch sites where you can get your motorboat, kayak or canoe into the water to fish, boat and paddle on New Hampshire's scenic waterways.



## Boating Education Required

New Hampshire has a mandatory boating education law. Everyone 16 years of age and older who operates a motorboat over 25 horsepower on New Hampshire waters must have a boating education certificate. Find a class at [boatingeducation.nh.gov](http://boatingeducation.nh.gov).

## Boat Access Sites

N.H. Fish and Game owns and maintains 142 public boat access sites around the state. Visit [fishnh.com/access](http://fishnh.com/access) for a list or to find Fish and Game boat ramps by town. For more information, call Fish and Game Boat Access Coordinator Garret Graaskamp at (603) 271-1748.

## Register Your Boat

The N.H. Department of Safety is responsible for issuing boat registrations in New Hampshire. Call (603) 271-2333. A few boating registration fast facts:

- **Which boats?** All motorized vessels of any size must be registered, in addition to sailboats and sailboards 12 feet or longer. Unmotorized canoes, kayaks and small sailboats do not need to be registered.
- **New boat:** The boat owner must register in person at any N.H. Department of Motor Vehicles substation. Some marinas, sport shops, and town halls also can provide boat registrations; call first. The owner will be asked to show proof of ownership (such as a bill of sale) and a photo ID.
- **Renewal:** Once a boat is registered, registrants will receive a renewal form in the mail in subsequent years; boat registrations may be renewed by mail or in person.

## Reciprocity

Any vessel that is registered in another state may operate on New Hampshire waters for 30 consecutive days or less without a New Hampshire boat registration. Operators must have the appropriate Safe Boating Certificate.

## General Boating Information

### N.H. Department of Safety

**Marine Patrol Headquarters**  
(603) 293-2037

### Motor Restrictions

Division of Safety Services  
(603) 293-2037 or  
[NH.gov/safety/divisions/nhsp/fob/marine-patrol/restricted.html](http://NH.gov/safety/divisions/nhsp/fob/marine-patrol/restricted.html)

See "Restricted Bodies of Water"

## Boating Safety Courses

- Classes offered year-round by N.H. Marine Patrol.
- Many locations throughout the state.
- Open to any boater over 14 years of age.
- Online study materials: [boat-ed.com/nh](http://boat-ed.com/nh)
- NASBLA approved.
- Satisfies requirements of mandatory boating education law.
- For class schedule, call N.H. Marine Patrol at 1-888-254-2125 or visit [boatingeducation.nh.gov](http://boatingeducation.nh.gov).
- Be smart — boat safe!

EST. 2004  
**J.F. GRIFFIN**  
PUBLISHING

# Showcase your business!



For advertising inquiries, please call  
**(413) 884-1001**

**Missed the printed edition?**

Ask about year-round digital opportunities.





## Ten Tips for Safe Boating

- 1. Don't Overload** Carry only the specified limit for your craft and don't sit on the gun-wales or the transom.
- 2. Wear Life Jackets or Vests** State law requires one wearable life preserver for each person in a boat. Kids 12 and under must wear a life preserver while underway on a vessel.
- 3. Know the Water** Always carry a chart (map) of the waters you are boating on.
- 4. In an Accident** Your first obligation is to save lives and help the injured. Call N.H. Marine Patrol: (603) 293-2037.
- 5. Water and Alcohol Don't Mix** Sixty percent of recent boating fatalities in N.H. are alcohol-related. Don't drink and boat—the .08 law applies to boaters, too!
- 6. Use Your Lights** All boats operating after dark must display lights to be visible to other boaters.
- 7. Use Caution** When passing within 150 feet of another boat, swimmers, rafts, shore, docks, or mooring fields, you must be at headway speed.
- 8. Don't Use the Water as a Dump** It is illegal to litter or discharge sewage into the water.
- 9. Don't Harass Wildlife** All wildlife are protected on the state's waters, subject to strict hunting and fishing regulations.
- 10. Take a Boating Safety Course** For info call Marine Patrol at (603) 267-7256.

### Drain Those Live Wells!

N.H. State law requires boaters to drain their boat and other equipment that holds water, including live wells and bilges, when leaving a waterbody.

### Good Fishing Depends on Clean Water

Many of our rivers, lakes, and coastal areas are experiencing algae blooms that cover our favorite fishing spots with green slime and cause fish kills and "dead zones" where no aquatic life can survive. The cause is usually nitrogen and phosphorus pollution that comes from farm and lawn fertilizers, septic systems, animal waste, and sewage treatment plants. Everyone can do their part for clean water by reducing fertilizer use, preserving plants along shorelines, and picking up pet waste. Supporting water quality protection supports great fishing! Learn more at: [epa.gov/nutrientpollution](http://epa.gov/nutrientpollution). A message from the US Environmental Protection Agency.



## Wildlife & Sport Fish Restoration: More Than 75 Years of Restoring, Managing and Researching Fish and Wildlife

Our thanks to hunters, shooters, anglers, boaters, and our industry partners! With the purchase of firearms and ammunition, archery equipment, fishing equipment, and motorboat fuels, hunters, anglers, boaters, and manufacturers pay excise taxes that are distributed to state fish and wildlife agencies for approved projects.

The US Fish and Wildlife Service joins state fish and wildlife agencies, private industry and the public in a partnership to conserve fish and wildlife resources.

With help from more than \$150 million in federal aid funding over more than 75 years, New Hampshire Fish and Game has been able to:

- Gain knowledge through research
- Manage fish and wildlife populations
- Acquire Wildlife Management Areas
- Improve and protect aquatic habitat
- Restore fish and wildlife populations
- Conduct Hunter and Aquatic Education programs
- Construct, upgrade, and maintain more than 140 public access sites for boating and fishing.

Your purchase of hunting and fishing equipment and motorboat fuels supports wildlife and sport fish restoration and boating access facilities.



### Diver There, Please Beware

N.H. State law requires boaters to stay at least 150 feet away from a red flag with a white stripe or other flags in the water. They signal that scuba divers are in the area.

## CLEAN DRAIN DRY

**CLEAN** off any mud, plants, animals and algae from boats, trailers and equipment.

**DRAIN** your boat and equipment away from the waterbody.

**DRY** anything that comes into contact with the water.

### Please perform a self-inspection of your boat, trailer and gear.

Remove tag-along plants, animals and algae before launching and after leaving a waterbody.



It is **ILLEGAL** to transport and introduce aquatic invasive species in New Hampshire.

Boaters are **REQUIRED BY LAW** to clean and drain live-wells and other water-related equipment when leaving water bodies.

# FISHING THE “HARDWATER” SEASON



## Get your family excited about going ice fishing!

A few basic preparations can make your ice-angling adventure a day to remember.



Ice fishing equipment is specialized but simple. You need a sled for moving equipment onto the ice—a big plastic boat sled can haul your gear or a tired child. A homemade sled works great, too; try a wooden box attached to a pair of old downhill skis.

A “spud” can be used to test the thickness of the ice, to make holes in the ice, or to re-open holes made by someone else. An auger is a giant drill for making holes in the ice; get a hand auger for the exercise, or a power auger to make lots of holes in a hurry. Use a “skimmer”—a long-handled slotted spoon—to remove slush and ice from your ice-fishing holes.

The most popular ice-fishing device is the “tip-up.” The reel, spooled with several hundred feet of braided line, is submerged in the water; the rest of the device is suspended on the ice by a pair of crossed “arms.” A simple triggering mechanism makes a flag pop up when a fish takes the bait, at which point you pull the device from the water and reel the fish in by hand.

Your bait will usually be near the bottom, so you’ll want a “sounder” to know how far down the bottom is. A sounder is a heavy metal weight with a clip that attaches to your hook or line. Lower it into the hole, and take the guesswork out of how deep to fish. Mark your line with a button or small sinker, and you won’t have to re-sound after catching a fish or changing bait.

For a more active ice-fishing experience, try a jig rod—like a regular spinning outfit with a short (2 to 3-foot) rod. Jig rods are named for the up-and-down “jig” motion the angler gives the bait or lure. They allow you to fish throughout the water column.

### You’ll Need Bait

Live shiners are the bait of choice, and are sold in many locations. You will need a bait bucket for them, and a bait dipper, which is a small net to retrieve the little rascals from the cold water. Mealworms and maggots are best baits for sunfish and crappies.

### What to Wear

A good pair of insulated boots, heavy wool socks and long johns are musts. A fleece layer is next—or perhaps the traditional wool pants and shirt. Your outer layer needs to be wind-proof and waterproof; snow pants and a good winter coat will do the trick. Layering will give you and your family better protection and comfort in the cold. Don’t forget a warm hat and insulated gloves.

### Bring Snacks

Snacks and drinks are very important for keeping your energy up on the ice. Fill a thermos with beef stew or mac and cheese, and another with hot cocoa.

### Other Gear

A small tackle box carries other items you shouldn’t be without—hooks, spare sounders, non-lead sinkers, lures, jigs, a first-aid kit, pliers and trash bags. For safety and comfort, also bring rope (15 feet), extra clothing (leave in vehicle), a compass, fire starter and matches, a folding lawn chair or pack chair, a heavy blanket, and those handy little instant-heat packets. Consider ice crampons or “creepers” for walking on ice.

Ice fishing is the main focus of the trip, but there is some waiting involved; having activities to keep busy and warm will only add to the fun. Frisbee, wildlife tracking, snow-fort building and skating are favorites. Time of day doesn’t matter, so plan your trip around the warmest part of the day, and keep it short to start. You don’t have to go far from home to have a good time ice fishing. Let’s face it—New Hampshire winters can seem a little long. Having an activity to look forward to makes them much more fun. Enjoy your winter on the ice!

**Whether you’re fishing for trout, bass, crappie, or perch — ice fishing is a great way to spend a winter day.**



## General Rules

Ice fishing in most New Hampshire lakes and ponds begins at “ice-in” and ends at “ice-out.” Depending on the weather and ice safety, this “season” can be from late December through mid-April. These types of waters support mostly warmwater fish populations, including perch, pickerel, black crappie and bass, with a few waters providing opportunities to catch brook, rainbow or brown trout through the ice. For specific bag limits for certain species, see *Lakes & Ponds: General Rules* on page 13. **Waters managed for lake trout and/or salmon have a defined season of January 1 through March 31. Remember—salmon may not be taken through the ice. Designated trout ponds are closed to ice fishing.**

On most New Hampshire waters, the general rule is 6 ice fishing devices (lines) per person when ice fishing, with the following exceptions:

- Ice anglers are limited to 5 lines while ice fishing on N.H.-Maine border waters, except Great East Lake, which has a 2-line limit.
- Only 2 ice fishing devices (lines) per angler are allowed when fishing the designated lake trout and salmon lakes listed below (see exceptions under Cusk Fishing).

**Note on Interstate Waters:** See pages 38–39 for additional rules for ice fishing on interstate waters.

Hooks used for bait while ice fishing must have only a single hook with a single hook point per ice fishing device.

Bob houses must be removed from public waters, public property or private property no later than April 1. The owner's name and address shall be plainly marked on the bob house and shall have 12 square inches of reflective material half-way up on the outside of each side.

## Cusk Fishing

Freshwater cusk (burbot) may be taken through the ice with a cusk fishing device (see definition on page 8) marked with the name and address of the user. In addition to the normal number of lines allowed (see line limits above), up to 6 cusk fishing lines may also be used. Any species other than cusk caught on a cusk line must be released immediately by cutting the line without removing the fish from the water.

The sinker of the cusk fishing device must rest on the bottom of the waterbody. Through the ice, cusk fishing devices will be permitted to be set and left unattended, except once during each 24-hour period, the bait end of the line must be inspected. “Bobbing,” “jigging,” or movement of the bait to attract fish is prohibited.

**The use of cusk fishing devices is restricted to the following waters:** First Connecticut Lake (Pittsburg), Second Connecticut Lake (Pittsburg), Third Connecticut Lake (Pittsburg), Lake Francis (Pittsburg), Lovell Lake (Wakefield), Merrymeeting Lake (New Durham), Newfound Lake (Bristol, Alexandria, Bridgewater, Hebron), Ossipee Lake (Freedom/Ossipee), Silver Lake (Madison), Big Squam Lake (Holderness, Center Harbor, Sandwich, Moultonboro), Little Squam Lake (Holderness, Ashland), South Pond (Stark), Sunapee Lake (Newbury, New London, Sunapee), Waukewan Lake (Meredith), Wentworth Lake (Wolfboro), Lake Winnepesaukee (Alton, Center Harbor, Gilford, Laconia, Meredith, Moultonboro, Tuftonboro, Wolfeboro), and Winnisquam Lake (Belmont, Sanbornton, Laconia, Tilton, Meredith).

## Safety on Ice

Is the ice safe? You won't know until you test it. Use a chisel or “spud” to thump the ice as hard as you can; if it does not break through, continue onto the ice. Make a test hole to check the thickness where you hit, and check the ice at intervals on your way out to your fishing spot.

Generally speaking, solid, clear ice of 5 to 6 inches is adequate for small groups; ice thickness of 8 inches and up is good for large groups. Be aware that ice can be weakened by objects frozen into it, because they hold the heat from the sun; avoid docks, large rocks and trees fallen onto the ice. Also avoid areas with springs or moving water under the ice. Visit [fishnh.com/outdoor-recreation/ice-safety.html](http://fishnh.com/outdoor-recreation/ice-safety.html) to learn more.

## NH's TOP SELECTION SHIMANO REELS, RODS & CLOTHING



Tracker Boats

**Friendly experienced service!**

**TAX FREE NH!**

**TRACKER**  
OFF ROAD

**MERCUY**

**TRACKER**  
boats

**TRAILER**

**Tires! • Parts! • Service!**



*Family owned  
since 1948*

**17 New Rocherster Road, Dover, NH  
603.742.5453**

[www.dovermarine.com](http://www.dovermarine.com) • [www.coveredbridgesports.com](http://www.coveredbridgesports.com)

WATERBODY	MANAGED FOR LAKE TROUT	MANAGED FOR LANDLOCKED SALMON*
Connecticut Lake, First	•	•
Connecticut Lake, Second	•	•
Connecticut Lake, Third	•	•
Conway Lake		•
Dan Hole Pond, Big	•	•
Diamond Pond, Big	•	
Francis Lake	•	•
Granite Lake	•	
Great East Lake	•	
Greenough Pond, Big	•	
Merrymeeting Lake	•	•
Newfound Lake	•	•
Nubanusit Lake	•	•
Ossipee Lake		•
Silver Lake (Harrisville)	•	
Silver Lake (Madison)	•	
Squam Lake, Big	•	•
Squam Lake, Little	•	•
Sunapee Lake	•	•
Winnepesaukee Lake	•	•
Winnisquam Lake	•	•

\*Note: salmon may not be taken while ice fishing

## Win a \$100 Gift Card!

Take the monthly

**ANGLERSURVEY.COM**



**And be entered to win  
a \$100 gift certificate to your  
sporting good retailer of choice.**

Your anonymous participation advances fish and wildlife conservation, helps protect your right to hunt, fish and shoot, and guides companies in developing better outdoor products.

# YOUR FISHERIES HABITAT FEE

## Restoring and Conserving Fish Habitat in New Hampshire

When you buy a fishing license in New Hampshire, \$1 of your license fee goes into the Fisheries Habitat Account. This account has funded many restoration and land conservation efforts over the years. Typically, it funds about 10-20% of completed fisheries habitat projects.

To meet the goal of providing diverse fishing opportunities, the **Fisheries Habitat Program** restores and conserves habitat. For fish habitat restoration projects in streams and rivers, fisheries managers have learned from a body of large scientific studies that fish populations do best when their habitat is most like that which would naturally occur, so our projects mimic natural processes.

That typically means we are restoring riverine processes, things that create diverse habitats such as riffles and pools, with a particular focus on the restoration of instream wood, which has largely been removed from our rivers and streams. Instream wood is a natural part of streams and rivers. It forms deep pools and creates excellent shelter for all sizes and species of fish. It also can help reduce the nutrient load moving downstream; microbes such as bacteria and fungi live in the complex structure of instream wood (logs, sticks and leaves), and they use a large amount of the nutrients dissolved in the flowing water.

The Habitat Program conducts restoration projects with many partners across the state, representing the spectrum of conservation interests. Excellent relationships with our partners are vital to the successful completion of these high-priority projects. Typically, the program provides technical assistance, scientific analysis and recommendations to projects, and sometimes funding from the Fisheries Habitat Account.

Since 2000, the Habitat Account has been used to restore and conserve fish habitat across the state, and by a number of means. Much of this work has been done in streams and rivers, by strategically placing trees and boulders to restore natural river processes and aquatic habitat. Some examples are the Nash Stream and Indian Stream Restoration projects. Those two initiatives also included another activity: restoring the ability of fish to move throughout a watershed. Think about this in your life; you need to get to school, work, the grocery store, etc. Movement is especially important for fish to fulfill their life cycles and have healthy populations. We have focused on removing barriers, specifically culverts under roads, and replacing them with structures that do not impede the movement of fish. Another significant activity is the long-term preservation of the aquatic and nearby terrestrial habitat through land conservation. The account has provided funds to a number of high-priority projects, such as conservation of a property along the Connecticut River in Pittsburg that secured about five miles of habitat along the river, as well as several tributaries that flow into it.

An underwater view shows the complexity of instream wood, creating great cover for fish.

*Johnson Brook at Nash Stream Forest — wood carefully placed into this stream created deep pools and provides lots of cover for trout.*

## Are you a Landlocked Salmon Angler?

Anglers can help to conserve our landlocked salmon fishery through responsible catch-and-release angling practices, including the use of rubber nets, careful removal of hooks, and minimizing the time fish are held out of water. By pledging to be a dedicated steward of New Hampshire's limited landlocked salmon fishery, you can make a real difference in sustaining this valuable resource. Check [fishnh.com](http://fishnh.com) for more info and download a brochure.



Conserving This Unique  
Fishery Through  
Responsible Angling

## MARSHMALLOWS TASTE BETTER



Whatever you like to do,  
there's a NH campground for you!  
Download or order your free copy of  
the New Hampshire Camping Guide  
at [www.nhlovescampers.com](http://www.nhlovescampers.com)



## Bag Limits and General Rules

The daily bag limit for smelt is 2 quarts liquid measure of whole (head and tail intact) freshwater smelt in the 24-hour period between 12 noon one day and 12 noon the following day. Persons taking freshwater smelt must at all times keep their individual take in separate, unbreakable containers marked with their name. A person cannot take smelt while using a boat propelled by mechanical power.

## Season for Taking Smelt by Angling

From June 16 through March 14, smelt may be taken by angling only, except in Trout and Fly-Fishing-Only ponds, which are open June 16 through Oct. 15.

## Season for Taking Smelt with a Dip Net

From March 15 through April 30, smelt may be taken by means of a dip net not over 18 inches in diameter, between the hours of sunset and 12 midnight. **Only the following waters are open to the taking of freshwater smelt by dip net:**

POND/LAKE NAME	TOWN
Deering Reservoir	Deering
Manning Lake/Guinea Pond	Gilmanton
Pea Porridge Pond	Madison
Rust Pond	Wolfeboro
Sandy Pond	Richmond
Suncook Lake	Barnstead
Sunset Lake/Places Pond	Alton, Gilmanton
Webster Lake	Franklin

STREAM/RIVER NAME	TOWN
Bearcamp River (From Tamworth/Ossipee town line to Ossipee Lake)	Ossipee
Mascoma River (From Canaan/Enfield town line to Mascoma Lake)	Enfield

## Use of Lead Tackle Restricted in N.H.

**New Hampshire state law prohibits the use and sale of all lead sinkers and jigs that weigh one ounce or less, regardless of length, in all fresh waters of the state.** The law does not apply to lead core line, spinnerbaits, buzzbaits, spoons, poppers, plugs, or flies.

Loons and other waterbirds can die from lead poisoning after swallowing lead fishing sinkers and jigs lost by anglers.

Biologists have studied the effects of lead sinkers and jigs on waterbirds, such as loons and swans, since the 1970s. Their ongoing research has documented that, in the northeast U.S. and Canada where loons breed, lead sinkers or jigs can account for up to half of dead adult loons found by researchers.

## What You Can Do:

- Do not use lead sinkers and jigs.
- Spread the word. Tell other anglers about the problem with lead.
- Dispose of old lead sinkers and jigs properly. Drop-off locations include all N.H. Fish and Game offices.
- Learn more at [fishleadfree.org](http://fishleadfree.org).

## Careful with Those Plastic Baits!

New Hampshire fisheries biologists are reporting increasing numbers of caught trout and salmon with indigestible soft plastic lures in their stomachs. A discarded soft plastic lure consumed by a trout from the bottom of a freshwater lake likely remains in that fish's stomach for the rest of its life, and may cause health issues such as ulcers and weight loss. **Anglers are strongly encouraged to purchase biodegradable and food-based lures rather than soft plastic ones.** It is also important that anglers not discard plastic lures into any waters, and also to attempt to retrieve any soft plastic lures that have become unhooked.



*These lures were found in the stomach of a 14-pound lake trout caught by George Manley of Sidney, Maine, in Maranacook Lake in 2009. (Image courtesy of MDIFW)*



# FISH IDENTIFICATION



**Landlocked Atlantic salmon**



**American shad**

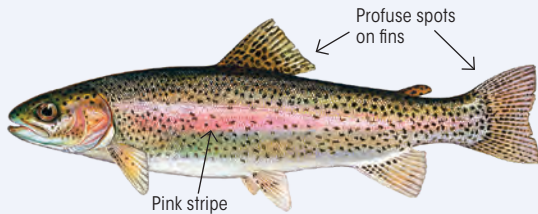


**Brown trout**

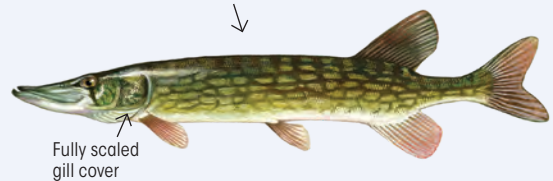


**Rainbow smelt**

Dark chain-like markings on olive background

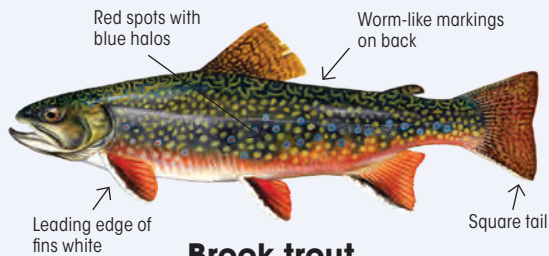


**Rainbow trout**



**Chain pickerel**

Light-colored bean-shaped spots on olive background



**Brook trout**



**Northern pike**



**Round whitefish**



**Lake trout**



**Lake whitefish**

Illustrations, this page: Landlocked Atlantic salmon, American shad, Rainbow smelt ©NHFS Victor Young; Brown trout, Rainbow trout, Chain pickerel, Brook trout ©Duane Raver; Northern pike, Round and Lake whitefish ©Ellen Edmondson (Image courtesy of the New York State Department of Environmental Conservation. All rights reserved.); Lake trout ©Timothy Knepp.



# FISH IDENTIFICATION



**White perch**



**Yellow perch**



**Walleye**



**Pumpkinseed**



**Brown bullhead (Horned pout)**



**Cusk (Burbot)**



**Largemouth bass**

**NOTE:** Both may be referred to as "black bass" on the regulatory pages.



**Smallmouth bass**



**Rock bass**



**Bluegill**



**Black crappie**

# STOP AQUATIC HITCHHIKERS!

The quality of our waters is extremely valuable, both as a natural and economic resource. In addition to providing essential aquatic habitat, New Hampshire's waters annually provide 14.7 million visitor days for boating, fishing and swimming — popular family-oriented recreational activities that add more than \$1 billion to the state's economy each year. Your help is needed to protect these resources. **It's up to boaters and anglers to keep nuisance species from invading New Hampshire's waters!**

New Hampshire's waters are threatened by several non-native aquatic invasive plants and animals. They can easily be transported to new waters by boats, motors, trailers, fishing equipment, live-wells, bait buckets, diving gear and other aquatic recreational equipment. **Check your boat and equipment** and remove any plants or other materials—milfoil and other invasives can easily adhere to propellers and many other catch points.

Invasives can also be put into our waters by individuals who are not aware of the environmental and economic damages these nuisance plants and animals can cause. **Never release** plants, fish or animals into a body of water unless they came out of that body of water. It's the law!

## Invasive Plants

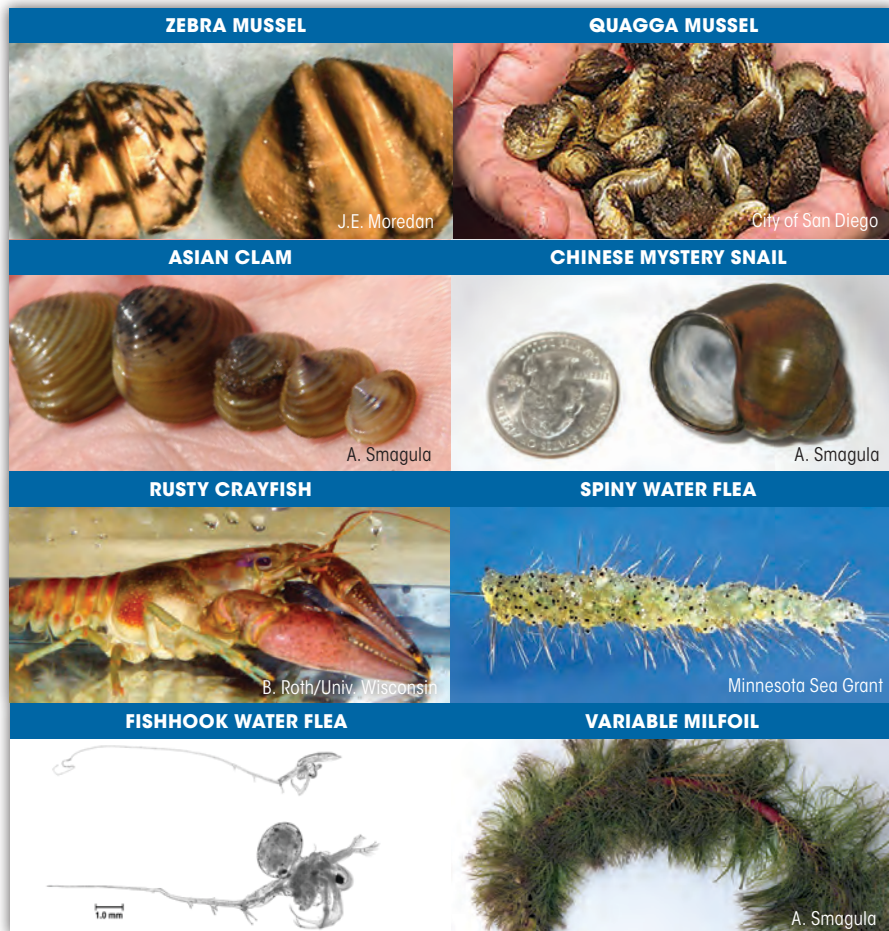
RSA 487: 16-c states it is illegal to transport, import, purchase, propagate, sell, or distribute 14 species of non-native aquatic plants in New Hampshire. Among the 14 species, **variable milfoil** is the most abundant and problematic invasive aquatic plant in New Hampshire.

## Invasive Animals

Nonnative invasive animals are also a growing concern in New Hampshire. **Zebra mussels** and **quagga mussels** can attach to boat hulls and clog water intake systems. They are not here yet—it is extremely important to keep them out of New Hampshire waters.

**Asian clams** are already present in the lower Merrimack River and several ponds; they compete with native mussels for space and food.

The **Chinese mystery snail** is also here, present in lakes and ponds as far north as the Lakes Region. **Rusty crayfish** have been found in Vermont. The **spiny water flea** and the **fishhook**



**water flea** are present in the Great Lakes and Lake Champlain. These invaders compete with native species for zooplankton, affecting the entire food chain.

## It's the Law

RSA 487:16-d requires boaters to drain their boat and other equipment that holds water, including live wells and bilges, when leaving a waterbody. Pursuant to RSA 487:43, a special aquatic invasive species out of state boater decal will be required for display on motorized boats registered in a state other than New Hampshire, which are used on New Hampshire's

waters. NOTE: This program is currently being established and is not yet implemented. We anticipate the out of state boater decal to be online for 2021 boating season, with online interface ready starting in December 2020, for purchase of 2021 decals. The boater decal will be available at [www.des.nh.gov](http://www.des.nh.gov).

## Learn More

For more information, contact the N.H. Department of Environmental Services, Exotic Species Program at 603-271-2248, [des.nh.gov](http://des.nh.gov); N.H. Fish and Game at 603-271-2501, [fishnh.com](http://fishnh.com); or visit [protectyourwaters.net](http://protectyourwaters.net).



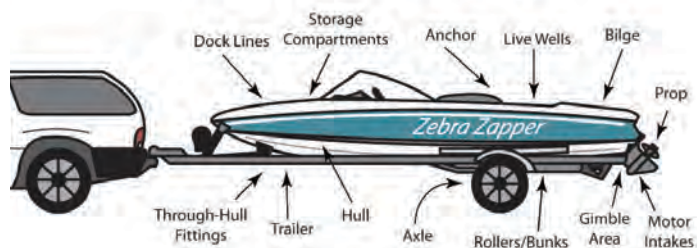
## STOP AQUATIC HITCHHIKERS!

### Clean...Drain...Dry

To help prevent the transport of aquatic nuisance species, clean all recreational equipment whenever you leave a body of water:

- **Remove** any visible mud, plants, fish or animals.
- **Drain water from equipment** (engine water intake systems, bilge, live wells, bait buckets).
- **Clean and dry** anything that comes into contact with water (boats, paddles, trailers, waders, etc.).

Before leaving and before launching...  
**inspect everything!**





# BAIT FISH INFORMATION

## Possession and Use of Live Fish for Bait

- Only the following species shall be possessed and used as live fish for bait when fishing any freshwaters of the state:

### Common name (Scientific Name)

- » Rainbow smelt (*Osmerus mordax*)
  - » Longnose dace (*Rhinichthys cataractae*)
  - » Blacknose dace (*Rhinichthys atratulus*)
  - » Northern redbelly dace (*Phoxinus eos*)
  - » Lake chub (*Couesius plumbeus*)
  - » Creek chub (*Semotilus atromaculatus*)
  - » Fallfish (*Semotilus corporalis*)
  - » Golden shiner (*Notemigonus crysoleucas*)
  - » Common shiner (*Luxilus cornutus*)
  - » Emerald shiner (*Notropis atherinoides*)
  - » Spottail shiner (*Notropis hudsonius*)
  - » Silvery minnow (*Hybognathus nuchalis*)
  - » Creek chubsucker (*Erimyzon oblongus*)
  - » Longnose sucker (*Catostomus catostomus*)
  - » White sucker (*Catostomus commersonii*)
  - » Killifish/tomcod (*Fundulus sp.*)
- Daily limit of bait fish for personal use is 2 quarts liquid measure. See special rules for rainbow smelt on page 33.
  - No more than 6 bait traps shall be used to take fishing bait, and all bait traps, holding boxes, or other receptacles shall be plainly marked with the name and address of the owner or user.
  - A circular drop net, not more than 48 inches in diameter, or a square net of equal area, may be used for taking baitfish, from waters not inhabited by brook trout. Traps may be set for taking baitfish, in water inhabited by trout, provided that no such trap shall exceed 18 inches in length, and that the aperture therein for the entrance of fish shall not exceed one inch in diameter.

## White Suckers

In addition to angling and ice fishing, white suckers may be taken for personal use as bait by use of traps, made of wire slats not more than 50 inches long nor more than 30 inches wide, with an aperture for the entrance of fish no smaller than 3 1/2 inches in diameter, except as otherwise provided in Fis 406 and Fis 407. No more than 2 traps shall be used by a licensed fisherman, and all bait traps, holding boxes or other receptacles shall be plainly marked with the name and address of the owner and user. There are no bag limits for suckers.

## Importation of Finfish for Bait

- Licensed bait dealers shall obtain a permit from the N.H. Fish and Game Department before importing any shipment or lot of bait fish from hatchery sources or wild stock. Such permits shall be issued to import only:

### Common name (Scientific Name)

- » White sucker (*Catostomus commersonii*)
  - » Eastern creek chubsucker (*Erimyzon oblongus*)
  - » Tomcod/killifish (*Fundulus sp.*)
- » Golden shiner/Arkansas shiner (*Notemigonus crysoleucas*)
  - » Common shiner (*Luxilus cornutus*)
  - » Spottail shiner (*Notropis hudsonius*)
  - » Eastern silvery minnow (*Hybognathus regius*)
  - » Emerald shiner (*Notropis atherinoides*)
  - » Lake chub (*Couesius plumbeus*)
  - » Creek chub (*Semotilus atromaculatus*)
  - » Fallfish (*Semotilus corporalis*)
  - » Rainbow smelt (*Osmerus mordax*)
- Live fish imported for use as freshwater fishing bait may only be imported from states with an approved aquatic invasive species monitoring program. No species of aquatic invertebrate shall be imported for use as bait or otherwise.

## Taking of Smelt by Licensed Bait Dealers

- Licensed bait dealers may take freshwater smelt for sale as bait or for personal use, in accordance with the restrictions for taking smelt in Fis 400.
- No licensed bait dealer shall have in possession more than one daily limit of freshwater smelt while taking freshwater smelt for sale as bait from streams, pond or lakes, or when leaving such waters.
- Licensed bait dealers may take freshwater smelt for sale as bait, from ice-in through February 28 in the following waters:
  - » Beech Pond (Lower), Tuftonboro
  - » Cedar Pond, Milan
  - » Christine Lake, Stark
  - » Crystal Lake, Enfield
  - » Crystal Lake, Gilmanton
  - » Crystal Pond, Eaton
  - » Deering Reservoir, Deering
  - » Iona Lake, Albany
  - » Loon Lake, Freedom
  - » Loon Pond, Gilmanton
  - » Manning Lake, Gilmanton
  - » Pea Porridge Pond, Madison
  - » Pleasant Lake, Deerfield
  - » Post Pond, Lyme
  - » Rust Pond, Wolfeboro
  - » Sandy Pond, Richmond
  - » South Pond, Stark
  - » Sunapee Lake, Little, Springfield
  - » Suncook Lakes, Barnstead
  - » Sunset Lake, Alton/Gilmanton
  - » Tewksbury Pond, Grafton
  - » Webster Lake, Franklin
  - » Wentworth Lake, Wolfeboro
  - » White Lake, Tamworth

- Licensed bait dealers may take smelt in the waterbodies listed above by means of a dip net held in hand, a drop net not over 48 inches in diameter, or by means of a square umbrella net not over 42 inches on a side.
- The daily limit for smelt taken in waterbodies listed above shall be 8 quarts liquid of whole, head and tail intact, freshwater smelt in the 24 hours between 12 noon one day and 12 noon the following day.

## Crayfish

Crayfish may be taken for personal use with traps. The number of traps is limited to 6 per person and must have the person's name and address attached. Persons wishing to trap and sell crayfish for bait must purchase a commercial bait dealer's license. There are no daily bag or possession limits for crayfish. 6 trap limit does not apply to dealers.

## Got Questions?

For more information about licensed bait dealer regulations, please contact the N.H. Fish and Game Department's Inland Fisheries Division at (603) 271-2501.

## Dispose of Bait on Land or in the Trash

Bait and non-native plants and animal hitchhiking in bait can harm our lakes and rivers. Remember not to litter—please dispose of bait containers in appropriate receptacles!



Image courtesy of Illinois-Indiana Sea Grant College Program

## Make Hunting & Fishing Dreams Come True!

*Hunt of a Lifetime* is a nonprofit organization that grants hunting and fishing dreams to children, age 21 and under, who have been diagnosed with life threatening illnesses.



If you are interested in helping a child live their dream, please contact us for more information.

Toll Free 866.345.4455 [HuntOfALifetime.org](http://HuntOfALifetime.org)

# INTERSTATE WATERS

## NEW HAMPSHIRE • MAINE

### Licenses

All New Hampshire and Maine fishing licenses are valid for the taking of fish from New Hampshire-Maine interstate waters listed below.

### Waters Include:

- **Umbagog Lake** in Errol/Cambridge, NH, and Upton, ME, which includes the waters of the Androscoggin River downstream to the Errol Dam, the waters of the Magalloway River upstream to coordinates 44.795602° -071.062732° to 44.795602° -071.061793° using WGS84 map datum within New Hampshire and the waters of the Rapid River upstream to the marker at Cedar Stump in Maine.
- **Province Lake** in Effingham/Wakefield, NH, and Parsonsfield, ME.
- **Balch Pond** in Wakefield, NH, and Acton/Newfield, ME.
- **Horn Pond** in Wakefield, NH, and Acton, ME. —The northern terminus of Horn Pond will be delineated by signage.
- **Great East Lake** in Wakefield, NH, and Acton, ME.
- **Milton Watershed** in Milton, NH, and Lebanon, ME (Milton Watershed includes all of the Milton Three Ponds—Northeast Pond, Milton Pond and Townhouse Pond, beginning at the dam in Milton to the influx of the Branch River and the Salmon Falls River).
- **Lower Kimball Pond** in Chatham, NH, and Fryeburg, ME.
- **Spaulding Pond** in Milton, NH, and Lebanon, ME.
- **Salmon Falls River** in Wakefield, Milton, Rochester, Somersworth and Rollinsford, NH, and Acton, Berwick and South Berwick, ME, including the upper reach of the Salmon Falls River beginning at the outlet dam of Great East Lake, also known as State Line Canal, to a point downstream marked by signage delineating the northern terminus of Horn Pond.

### Dates

Whenever a period of time is named during which an act is permitted or prohibited, both the first and second dates named are included within such period.

### Ice Fishing Restrictions (NH • ME)

Fish may only be taken through the ice from January 1 through March 31 in lakes and ponds (except cusk and salmon).

It is unlawful to:

- Use more than five (5) lines; except on Great East Lake where no more than two (2) lines can be used.
- Take, sell or possess for use as bait any of the following fish, dead or living—pickerel, goldfish, yellow perch, white perch, bass, sunfish, crappie, horned pout, carp or any spiny-finned fish.

### Ice Fishing Shacks

No person who owns any shack or temporary structure used for ice fishing shall place, or allow to be placed, the shack or structure on the ice more than 3 days before the waters on which shack or structure is located are open to ice fishing.

All ice fishing shacks, while on the ice, must have the name and address of the owner on the outside in 2-inch letters.

Ice fishing shacks shall be removed from the ice within 3 days after those waters close to ice fishing.

### Open Water Restrictions (NH • ME)

It is unlawful to:

- Have more than two (2) lines in use;
- Take, sell or possess for use as bait any of the following fish, dead or living—pickerel, goldfish, yellow perch, white perch, bass, sunfish, crappie, horned pout, carp or any spiny finned fish;

## New Hampshire - Maine General Interstate Rules

SPECIES	SEASON	BAG LIMITS AND MINIMUM LENGTHS	IMPORTANT NOTES
Black Bass (Largemouth and Smallmouth Bass)	January 1 – March 31	2-fish daily limit; only 1 fish more than 14 inches	Artificial lures and flies only
	April 1 – May 14	2-fish daily limit; only 1 fish more than 14 inches	
	May 15 – June 30	Catch and release only	
	July 1 – December 31	2-fish daily limit; only 1 fish more than 14 inches	
Brook Trout	January 1 – September 30	2 fish daily limit; Minimum length 6 inches	Catch and release only October 1 – December 31
Rainbow Trout	January 1 – September 30	2 fish daily limit; Minimum length 10 inches in lakes and ponds and 6 inches in rivers and streams	Catch and release only October 1 – December 31
Brown Trout	January 1 – September 30	2 fish daily limit; Minimum length 10 inches in lakes and ponds and 6 inches in rivers and streams	Catch and release only October 1 – December 31
Lake Trout	January 1 – September 30	2 fish daily limit; Minimum length 18 inches	Catch and release only October 1 – December 31
Landlocked Salmon	April 1 – September 30	2 fish daily limit; Minimum length 14 inches	Catch and release only October 1 – December 31
Chain Pickerel	Open year round	10 fish daily limit; no length limit	
Smelt	Open year round	2 quart daily limit	Angling only
Cusk	April 1 – December 31	None	
All other species	Open year round	None	

## Exceptions to New Hampshire - Maine General Interstate Rules

WATERBODY	EXCEPTIONS
Great East Lake	No more than 2 lines during ice fishing season; lake trout minimum length is 16 inches; No smelt may be taken in tributaries
Lower Kimball Pond	Use of dip nets not over 18 inches in diameter shall be permitted between sunset and 12 midnight during the open water season for smelt
Salmon Falls River	Open year round, except closed to taking fish through the ice
Umbagog Lake	That portion of Umbagog Lake north of a straight line between Molls Rock, Errol, New Hampshire and the red post between Spillman and Glassby Coves, Magalloway Plantation, Maine shall be closed to ice fishing; brook trout minimum length is 18 inches; brook trout daily limit is 1 fish



## NEW HAMPSHIRE • VERMONT

### Connecticut River Regulations

For that portion of the river between New Hampshire and Vermont. "Connecticut River" means all waters of the river including the bays, set backs and tributaries, only to the first highway bridge crossing said tributaries on the Vermont and New Hampshire sides.

### Licenses

All New Hampshire resident and Vermont resident fishing licenses are valid for the taking of fish from the Connecticut River as defined above. All other nonresidents with a N.H. nonresident fishing license shall only take fish east of the Vermont low water mark while on the Connecticut River.

### Season

Open to fishing all year, except no fishing Oct. 16 – Dec. 31 from the confluence of the Upper Ammonoosuc River and the Connecticut River in Northumberland, NH, to the northern boundary of the town of Canaan, VT.

### Devices

No more than 6 ice fishing devices are allowed. When fishing in open water, no more than 2 lines may be used.

### Species Rules

The rules below apply during the open season for fishing.

- **American Shad:** Catch and release only.
- **Atlantic Salmon:** No open season for Atlantic salmon until declared by the Connecticut River Atlantic Salmon Commission.
- **Black Bass (Largemouth and Smallmouth Bass):** The daily bag limit for black bass is 2 fish, of which only one may be greater than 16 inches, from January 1 through March 31.
  - » The daily limit for black bass from April 1 through May 14 and June 16 to June 30 is 2 fish.
  - » Between May 15 and June 15, all black bass shall be immediately released unharmed,

at the site of catch, to the waters from which taken.

- » The daily limit for black bass from July 1 through December 31 is 5 fish.
- » During the period beginning May 15 and ending June 15, black bass shall be taken only by artificial lures and flies.
- **Black Crappie, Yellow and White Perch, Sunfish, Horned Pout (Bullhead):** The daily bag limit for each species shall be 25 fish and the aggregate daily limit shall not exceed 50 fish.
- **Brook, Brown and Rainbow Trout:** The season for taking brook, brown or rainbow trout by all legal methods shall open on January 1 and close October 15.
  - » Through open water, the daily limit is 5 fish or 5 pounds (whichever limit is first reached), except the daily limit is 1 fish from the Samuel Moore Dam downstream to the Rte. 18 bridge.
  - » Through the ice, the daily limit is 2 fish, except the daily limit is 1 fish from the Samuel Moore Dam downstream to the Rte. 18 bridge.
  - » From the Pittsburg, NH-Canaan, VT boundary downstream to the bridge that crosses the Connecticut River from West Stewartstown to Canaan, VT, from January 1 through March 31, all trout and salmon shall be immediately released unharmed and fishing will be permitted with barbless, single hook lures and flies only.
- **Carp:** May be taken by any legal method and by bow and arrow with cord attached, in that part of the river beginning at the point on the northern boundary of Grafton County in New Hampshire which is directly opposite the town of Concord, VT, south to the Massachusetts border.
- **Chain Pickerel:** The daily limit is 10 fish.
- **Northern Pike:** The daily limit is 1 fish; minimum total length 28 inches.

- **Round Whitefish:** Round whitefish (*Prosopium cylindraceum*) taken by any method shall be immediately released back into the waters from which it was taken.
- **Walleye:** No person shall take walleye 16 to 18 inches; the daily limit is 4 fish, of which only 1 can be larger than 18 inches.

### Special Exceptions

From a point 1,600 feet upstream from the bridge in North Stratford upstream to a point 250 feet below the Lyman Falls Dam in North Stratford, and marked by a sign, the following restrictions apply: Fishing shall be permitted by artificial lures and flies only. All lures and flies shall have barbless hooks or shall have all barbs pinched so they will not interfere with removal of the hook from the fish. All fish are to be immediately released unharmed.

### Fishways Closed

Vernon Dam in Vernon, VT., and Hinsdale, N.H., shall be closed to all fishing to a point 150 feet below the dam. Wilder Dam in Wilder, VT., and Lebanon, N.H., shall be closed to all fishing to a point 150 feet below the dam.



**Share your love of fishing with others — Become a "Let's Go Fishing" Instructor!**

**Volunteer instructors needed.**

Learn more: Call (603) 271-3212 or visit [fishnh.com/fishing/lets-go-fishing.html](http://fishnh.com/fishing/lets-go-fishing.html)

Aquatic Resources Education  
N.H. Fish and Game Department



## NEW HAMPSHIRE • MASSACHUSETTS

### Licenses

All New Hampshire and Massachusetts fishing licenses are valid for the taking of fish from NH-MA interstate waters listed below.

### Waters Include:

- **Bent Pond** in Winchester, NH, and Warwick, MA.
- **Long Pond** in Pelham, NH, and Dracut, MA.
- **Lake Monomac** in Rindge, NH, and Winchendon, MA.

- **Robbins Pond** in Rindge, NH, and Winchendon, MA.
- **Tuxbury Pond** in South Hampton, NH, and Amesbury, MA.

### Seasons

There are no closed seasons for taking any species, by all legal methods.

### Species

For all species: see *Lakes and Ponds: General Fishing Rules* on page 13.

# FISH CONSUMPTION GUIDELINES

## Is it Safe to Eat the Fish?

### Fish Consumption Guidelines

Fish can be an important part of a healthy diet, but some fish contain varying levels of pollutants including mercury. Because of this, the N.H. Department of Environmental Services recommends the following guidelines for eating freshwater fish that you catch in New Hampshire:

- Pregnant and nursing women, and women who may become pregnant, can safely eat **ONE**, 8-ounce meal of freshwater fish per month.
- Children under age 7 can safely eat **ONE**, 4-ounce meal of freshwater fish per month.
- All other adults and children age 7 and older can safely eat **FOUR** 8-ounce meals of freshwater fish per month.
- When eating bass, pickerel, white perch, or yellow perch, limit consumption to fish 12 inches or less in length while following the above guidelines.

Stocked trout contains relatively low levels of mercury. For rainbow and brown trout, women of childbearing age and children under age 7 can safely eat **ONE** 4-ounce meal per week; others can eat **SIX** 8-ounce meals per week. Brook trout could be either stocked or from a native population, and therefore should be consumed at the rate of the general freshwater advisory above.

Fish from a number of waterbodies in New Hampshire have been shown to have higher than average concentrations of mercury or other contaminants. For a complete list of water bodies with restrictions, go to [des.nh.gov](http://des.nh.gov) (search "fish consumption" in the A to Z list).

Additional consumption guidelines have been issued because of the concern for PCB (polychlorinated biphenyls) contamination in several locations.

- Country Pond in Kingston
- Squam Lake in Holderness, Center Harbor, Sandwich & Moultonboro

- For the Souhegan River from the Goldman Dam to one mile upriver near Riverway East located off of Elm Street in Milford it is recommended that anglers not eat, but catch and release unharmed, any fish caught in that section of river.

In addition, **NO** fish should be consumed from the Androscoggin River from Berlin south to the Maine border due to potential dioxin and mercury contaminations.

For more information on freshwater and saltwater guidelines, contact: N.H. Department of Environmental Services, Environmental Health Program (603) 271-1370, [des.nh.gov](http://des.nh.gov) (search "fish consumption" in the A to Z list).

## ANGLER'S SHOWPLACE

### Retailers



### Morse Sporting Goods

85 Contoocook Falls Road  
Hillsboro, NH 03244

Archery Pro Shop ■ 3D Course  
Hand-tied flies ■ Live Bait ■ St.Croix, TFO rods  
Hunting and Fishing Supplies ■ Ammo  
New/Used Guns ■ Clothing/Boots  
Deer and Turkey Weigh Station

**603-464-3444**  
9-6 Monday-Saturday ■ 9-noon Sunday  
[www.morsesportinggoods.com](http://www.morsesportinggoods.com)

### DUCRET'S Sporting Goods

HUNTING • FISHING • SPORTING GOODS  
RECREATION • CABOT STAINS • PPG PAINTS

133 Main Street • Colebrook, NH **603.237.4900**

### Newfound Sales Trading Post Inc.

Fishing & Bait • OHRV Reg. & Boat Reg  
Guns & Ammo • Licenses • Tools  
Radios & phones • Toys • Clothes

*NH Hunting & Fishing Licenses and much much more*

**(603) 744-8658**  
**381 Lake St. • Bristol, NH 03222**

### Conservation



Preserve, Protect, & Conserve wildlife habitat  
and resources. Join TODAY! [www.NHWF.org](http://www.NHWF.org)



### Buildings

## RAISE CHICKENS?

We have a wide selection of the  
*finest handcrafted coops*  
to fit anyone's budget.



### SHEDS STUFF

Call Us Now for  
Pricing & Information!  
**1.866.411.SHED**

The most up-to-date  
regulations online.



 **eRegulations.com**



# 2021 SUNRISE-SUNSET TABLES

Please note that the N.H. Sunrise and Sunset times may be several minutes before or after the times shown below, which are for Concord, NH. Check local media for exact sunrise/sunset times. Daylight Savings Time has been incorporated into this chart (in red).

Eastern Standard Time—Concord, NH

Lunar Phases: ○ = Full    ● = Last Quarter  
● = New    ○ = First Quarter

JAN.				FEB.				MAR.			
Day	Rise A.M.	Set P.M.	Lunar Phase	Rise A.M.	Set P.M.	Lunar Phase		Rise A.M.	Set P.M.	Lunar Phase	
1	7:18	4:21		7:02	4:58			6:21	5:36		
2	7:18	4:22		7:01	4:59			6:20	5:37		
3	7:18	4:23		7:00	5:00			6:18	5:38		
4	7:18	4:24		6:59	5:02	●		6:16	5:40		●
5	7:18	4:25	○	6:58	5:03			6:15	5:41		
6	7:18	4:26	○	6:57	5:04			6:13	5:42		
7	7:18	4:27		6:55	5:06			6:11	5:43		
8	7:18	4:28		6:54	5:07			6:10	5:45		
9	7:18	4:29		6:53	5:08			6:08	5:46		
10	7:17	4:30		6:52	5:10			6:06	5:47		
11	7:17	4:31		6:50	5:11	●		6:04	5:48		
12	7:17	4:32		6:49	5:12			6:03	5:50		
13	7:16	4:33	●	6:47	5:14			6:01	5:51		●
14	7:16	4:35		6:46	5:15			6:59	6:52		
15	7:15	4:36		6:45	5:16			6:57	6:53		
16	7:15	4:37		6:43	5:18			6:56	6:54		
17	7:14	4:38		6:42	5:19			6:54	6:56		
18	7:14	4:39		6:40	5:20			6:52	6:57		
19	7:13	4:41		6:39	5:22	●		6:50	6:58		
20	7:13	4:42	○	6:37	5:23			6:49	6:59		
21	7:12	4:43		6:36	5:24			6:47	7:00		○
22	7:11	4:45		6:34	5:26			6:45	7:01		
23	7:10	4:46		6:33	5:27			6:43	7:03		
24	7:10	4:47		6:31	5:28			6:41	7:04		
25	7:09	4:48		6:30	5:30			6:40	7:05		
26	7:08	4:50		6:28	5:31			6:38	7:06		
27	7:07	4:51		6:26	5:32	○		6:36	7:07		
28	7:06	4:52	○	6:25	5:33			6:34	7:09		○
29	7:05	4:54		6:23	5:35			6:33	7:10		
30	7:04	4:55						6:31	7:11		
31	7:03	4:56						6:29	7:12		

APR.				MAY				JUNE			
Day	Rise A.M.	Set P.M.	Lunar Phase	Rise A.M.	Set P.M.	Lunar Phase		Rise A.M.	Set P.M.	Lunar Phase	
1	6:27	7:13		5:40	7:47			5:09	8:20		
2	6:25	7:14		5:38	7:48			5:08	8:21		○
3	6:24	7:16		5:37	7:49	○		5:08	8:21		
4	6:22	7:17	○	5:36	7:50			5:08	8:22		
5	6:20	7:18		5:34	7:52			5:07	8:23		
6	6:18	7:19		5:33	7:53			5:07	8:23		
7	6:17	7:20		5:32	7:54			5:07	8:24		
8	6:15	7:21		5:31	7:55			5:06	8:25		
9	6:13	7:23		5:29	7:56			5:06	8:25		
10	6:12	7:24		5:28	7:57			5:06	8:26		●
11	6:10	7:25	●	5:27	7:58	●		5:06	8:26		
12	6:08	7:26		5:26	7:59			5:06	8:27		
13	6:07	7:27		5:25	8:00			5:06	8:27		
14	6:05	7:28		5:24	8:02			5:06	8:28		
15	6:03	7:30		5:22	8:03			5:06	8:28		
16	6:02	7:31		5:21	8:04			5:06	8:28		
17	6:00	7:32		5:20	8:05			5:06	8:29		○
18	5:58	7:33		5:19	8:06			5:06	8:29		
19	5:57	7:34		5:19	8:07	○		5:06	8:29		
20	5:55	7:36	○	5:18	8:08			5:06	8:30		
21	5:54	7:37		5:17	8:09			5:06	8:30		
22	5:52	7:38		5:16	8:10			5:07	8:30		
23	5:51	7:39		5:15	8:11			5:07	8:30		
24	5:49	7:40		5:14	8:12			5:07	8:30		○
25	5:48	7:41		5:13	8:13			5:08	8:30		
26	5:46	7:43	○	5:13	8:14	○		5:08	8:30		
27	5:45	7:44		5:12	8:15			5:08	8:30		
28	5:43	7:45		5:11	8:16			5:09	8:30		
29	5:42	7:46		5:11	8:16			5:09	8:30		
30	5:40	7:47		5:10	8:17			5:10	8:30		
31				5:10	8:18						

JULY				AUG.				SEPT.			
Day	Rise A.M.	Set P.M.	Lunar Phase	Rise A.M.	Set P.M.	Lunar Phase		Rise A.M.	Set P.M.	Lunar Phase	
1	5:10	8:30	○	5:37	8:07			6:11	7:20		
2	5:11	8:30		5:38	8:06			6:12	7:18		
3	5:12	8:29		5:39	8:05			6:13	7:17		
4	5:12	8:29		5:40	8:03			6:14	7:15		
5	5:13	8:29		5:41	8:02			6:15	7:13		
6	5:13	8:28		5:42	8:01			6:16	7:11		●
7	5:14	8:28		5:43	8:00			6:17	7:10		
8	5:15	8:28		5:45	7:58	●		6:19	7:08		
9	5:16	8:27	●	5:46	7:57			6:20	7:06		
10	5:16	8:27		5:47	7:55			6:21	7:04		
11	5:17	8:26		5:48	7:54			6:22	7:02		
12	5:18	8:25		5:49	7:53			6:23	7:01		
13	5:19	8:25		5:50	7:51			6:24	6:59		○
14	5:20	8:24		5:51	7:50			6:25	6:57		
15	5:20	8:24		5:52	7:48	○		6:26	6:55		
16	5:21	8:23		5:53	7:47			6:27	6:53		
17	5:22	8:22	○	5:54	7:45			6:28	6:52		
18	5:23	8:21		5:56	7:43			6:30	6:50		
19	5:24	8:21		5:57	7:42			6:31	6:48		
20	5:25	8:20		5:58	7:40			6:32	6:46		○
21	5:26	8:19		5:59	7:39			6:33	6:44		
22	5:27	8:18		6:00	7:37	○		6:34	6:43		
23	5:28	8:17	○	6:01	7:35			6:35	6:41		
24	5:29	8:16		6:02	7:34			6:36	6:39		
25	5:30	8:15		6:03	7:32			6:37	6:37		
26	5:31	8:14		6:04	7:30			6:38	6:35		
27	5:32	8:13		6:05	7:29			6:40	6:34		
28	5:33	8:12		6:07	7:27			6:41	6:32		○
29	5:34	8:11		6:08	7:25			6:42	6:30		
30	5:35	8:10		6:09	7:24	○		6:43	6:28		
31	5:36	8:08	○	6:10	7:22						

OCT.				NOV.				DEC.			
Day	Rise A.M.	Set P.M.	Lunar Phase	Rise A.M.	Set P.M.	Lunar Phase		Rise A.M.	Set P.M.	Lunar Phase	
1	6:44	6:26		7:22	5:37			6:59	4:12		
2	6:45	6:25		7:23	5:36			7:00	4:11		
3	6:46	6:23		7:24	5:35			7:01	4:11		
4	6:48	6:21		7:26	5:33	●		7:02	4:11		●
5	6:49	6:19		7:27	5:32			7:03	4:11		
6	6:50	6:18	●	7:28	5:31			7:04	4:11		
7	6:51	6:16		6:29	4:30			7:05	4:11		
8	6:52	6:14		6:31	4:29			7:06	4:11		
9	6:53	6:12		6:32	4:27			7:07	4:11		
10	6:55	6:11		6:33	4:26			7:08	4:11		○
11	6:56	6:09		6:35	4:25	○		7:08	4:11		
12	6:57	6:07	○	6:36	4:24			7:09	4:11		
13	6:58	6:05		6:37	4:23			7:10	4:11		
14	6:59	6:04		6:39	4:22			7:11	4:11		
15	7:01	6:02		6:40	4:21			7:12	4:12		
16	7:02	6:01		6:41	4:21			7:12	4:12		
17	7:03	5:59		6:42	4:20			7:13	4:12		
18	7:04	5:58		6:44	4:19			7:14	4:13		○
19	7:05	5:56		6:45	4:18	○		7:14	4:13		
20	7:07	5:54	○	6:46	4:17			7:15	4:13		
21	7:08	5:53		6:47	4:17			7:15	4:14		
22	7:09	5:51		6:49	4:16			7:16	4:14		
23	7:10	5:50		6:50	4:15			7:16	4:15		
24	7:12	5:48		6:51	4:15			7:16	4:16		
25	7:13	5:47		6:52	4:14			7:17	4:16		
26	7:14	5:45		6:53	4:14			7:17	4:17		○
27	7:15	5:44		6:54	4:13	○		7:17	4:18		
28	7:17	5:43	○	6:56	4:13			7:18	4:18		
29	7:18	5:41		6:57	4:12			7:18	4:19		
30	7:19	5:40		6:58	4:12			7:18	4:20		
31	7:20	5:38						7:18	4:21		

Source: sunrisesunset.com



# Angling Perfection

## TATULA



### **NEW! TATULA 300 BAIT CASTING REELS**

The perfect option for anglers fishing large presentations for even larger fish.

What really makes the Daiwa Tatula 300 so special is the inclusion of the T-Wing System level-wind. When you take the reel out of gear it allows for less resistance on the line, allowing the line to cast further.

### **NEW! PROCYON AL - SPINNING REEL**

For a higher level of performance, the Daiwa Procyon AL spinning reel family is back for the attack whether that means freshwater or inshore applications. From speckled trout, redfish, and snook to bass, walleye, and trout, the Procyon AL offers anglers the perfect reel for the pursuit.

### **TATULA®-XT BASS RODS**

For the experienced bass fisherman that needs quality & value. Tatula XT incorporates High Volume Fiber, a higher modulus carbon graphite construction which gives the Tatula XT series its lightweight, strength & sensitivity. X45® Bias Graphite Construction for virtually zero blank twist.

### **NEW! FUEGO BASS RODS**

All of the high quality features including lightweight graphite construction & comfortable EVA material handles. Slim & powerful lightweight construction, anodized stainless steel hooded reel seat, oxide ring guides, convenient hook keeper

**Save the date! FISHINGFEST® 2021 ~ April 1-4 ~ Freshwater, Saltwater, Fly Fishing Specials & more!**



# KITTERY TRADING POST®

Rte 1 Kittery, ME / 888-587-6246 / [ktp.com](http://ktp.com) / [ktpevents.com](http://ktpevents.com)

