



## SPORT FISHING REGULATIONS SUMMARY

# Northern

# 2021



# Alaska



Share your fishing  
experiences on  
social media using  
#wefishak

*Effective until the 2022 Summary is issued*



[WWW.ADFG.ALASKA.GOV](http://WWW.ADFG.ALASKA.GOV)

LICENSING &  
REGIONAL  
REGULATIONS

KUSKOKWIM  
- GOODNEWS  
DRAINAGES

NORTH SLOPE  
DRAINAGES

NORTHWESTERN  
DRAINAGES

YUKON RIVER  
DRAINAGE

TANANA RIVER  
DRAINAGE

UPPER COPPER -  
UPPER SUSITNA  
DRAINAGES

# Table of Contents

Booklet Instructions . . . . .	3
--------------------------------	---

## **LICENSING & REGIONAL REGULATIONS:**

### **Licensing:**

License Requirements and Fees. . . . .	4-5
King Salmon Stamp Requirements and Fees. . . . .	5
Harvest Records. . . . .	5

### **Regional Regulations:**

Prohibited Acts, Liability for Violations . . . . .	6
Methods and Means . . . . .	6-7
Use of Sport-Caught Fish as Bait . . . . .	7
Possession of Sport-Caught Fish . . . . .	7
Definitions . . . . .	8-9

## **REGULATIONS BY AREA:**

Northern Alaska Waters Index. . . . .	10-11
Kuskokwim-Goodnews Drainages . . . . .	12-15
<i>General Regulations</i> . . . . .	12-13
<i>Special Regulations</i> . . . . .	14-15
North Slope Drainages . . . . .	16-17
Northwestern Drainages . . . . .	18-19
Yukon River Drainage. . . . .	20-21
Tanana River Drainage . . . . .	22-27
<i>General Regulations</i> . . . . .	22-24
<i>Special Regulations</i> . . . . .	25-27
Upper Copper/Upper Susitna Drainages . . . . .	28-36
<i>General Regulations</i> . . . . .	28-29
<i>Special Regulations</i> . . . . .	30-36
Chitina Dipnet Personal Use Salmon Fishery	37-38

## **OTHER INFORMATION:**

Shellfish . . . . .	39-40
Stocked Waters and Species Stocked. . . . .	41-42
Species Information and Identification . . . . .	43-45
Trophy Fish Program. . . . .	46
Transfer of Possession Form . . . . .	47
Regional Offices/Commissioner's Message. . . . .	48

## *Alaska Department of Fish and Game*



### **DIVISION OF SPORT FISH**

1255 W. 8th Street  
P.O. Box 115526  
Juneau, Alaska 99811-5526  
(907) 465-4180

Mike Dunleavy, *Governor*  
Doug Vincent-Lang, *Commissioner*  
Dave Rutz, *Director*

The Department of Fish and Game (ADF&G) is responsible for managing fish and game under statutory authority from the Alaska Legislature. By law, the mission of the Department of Fish and Game is to protect, maintain, and improve the fish, game, and aquatic plant resources of the state, and manage their use and development in the best interest of the economy and the well-being of the people of the state, consistent with the sustained yield principle.

The Division of Sport Fish is one of six divisions in the department. By law, the mission of the Division of Sport Fish is to protect and improve the state's sport fisheries resources. Division of Sport Fish operations are largely funded by anglers and recreational boaters through contributions to Federal Aid in Sport Fish Restoration and Fish and Game license funds. At least 15 percent of the state's federal aid apportionment must be used for improvement of recreational boating facilities and access.

### **ADF&G may change fishing regulations at any time by emergency order.**

Statewide, numerous emergency orders may be issued to open or close seasons or areas, modify bag limits and methods and means in any given year. Most, but not all, affect salmon fishing, as opposed to fishing for resident species. Emergency orders may also be posted at key access points. All emergency orders are widely announced via news media, and are accessible on recorded ADF&G hotlines, at ADF&G offices (see a list on the back cover), and online at [www.adfg.alaska.gov](http://www.adfg.alaska.gov).

## **Alaska Board of Fisheries**

The Alaska Board of Fisheries (Board) adopts Alaska's fishing regulations under statutory authority from the Alaska Legislature. The Board sets fishing seasons, bag limits, and methods and means. It also sets policy and provides direction of the management of the state's fishery resources through regulatory management plans. The Board consists of seven members that are appointed by the governor, confirmed by the Legislature, and serve 3-year terms.

The Board process is one of the more open systems for incorporating public input into state fisheries policy. The Board meets four to six times per year to consider proposed changes to fishing regulations in specific areas of the state. Any individual or organization may submit a proposal to change a fishing regulation. The Board uses biological and socioeconomic information provided by the Alaska Department of Fish and Game, public comment, and guidance from the Alaska Department of Public Safety and Alaska Department of Law when creating regulations.

The Board meets on a 3-year cycle. It most recently addressed Arctic, Yukon, Kuskokwim fishing regulations in January, 2019.

### **Alaska Board of Fisheries Current Members**

Märit Carlson-Van Dort (Chair). Anchorage  
Israel Payton . . . . . Wasilla  
John Jensen . . . . . Petersburg  
John Wood . . . . . Willow  
Gerad Godfrey . . . . . Eagle River  
McKenzie Mitchell . . . . . Fairbanks  
Abe Williams . . . . . Anchorage

For more information on the board process, contact the Alaska Department of Fish and Game, Boards Support Section at: (907) 465-4110.



# How to Use This Book



**Licensing Requirements** - Read licensing and harvest recording requirements on pages 4 and 5.

**Regional Regulations** - These outline allowable sport fishing gear, possession requirements for sport caught fish, and other general regulations, as well as prohibited acts.

**General Regulations** - Read the general regulations for seasons, bag, possession, and size limits, and methods and means for the area in which you intend to fish.

**Special Regulations** - Check the Northern Alaska Waters index on pages 10-11. If a special regulation exists for the species when and where you plan to fish, follow the special regulation; special regulations prevail over the general regulations listed for that area. If the waters you plan to fish DO NOT APPEAR in the index or within the special regulations, follow the general regulations for seasons, bag, possession, and size limits, and methods and means for that area.

This summary of Alaska sport and personal use fishing and shellfish regulations is published by the Division of Sport Fish as a service to anglers. It is not intended to be a complete digest of all fishing regulations.

For a complete list of all sport fishing regulations, see the Alaska Administrative Code, Title 5 at:

<http://www.legis.state.ak.us/basis/folioproxy.asp?url=http://wwwjnu01.legis.state.ak.us/cgi-bin/folioisa.dll/aac>.

**Some regulations in this booklet may be changed by the Alaska Board of Fisheries during its regular meetings, by emergency regulation, or by emergency order at any time.**

## ► **Emergency Orders:** *Inseason changes to regulation*

Regulations in this booklet may be changed by emergency order at any time. If an inseason change has been made by emergency order for the species when and where you plan to fish, follow the inseason regulation; inseason regulatory changes prevail over the regulations listed in this booklet. All such changes can be found by contacting any ADF&G Sport Fish Office or online at the ADF&G website.



**You can sign up to receive emergency order notifications via email.**

**Visit: [www.wefishak.alaska.gov](http://www.wefishak.alaska.gov) for more information.**

## Catching Our Emails?



► Fishing Reports    ► Emergency Orders  
► Advisory Announcements

**Sign Up Today!** visit [www.wefishak.alaska.gov](http://www.wefishak.alaska.gov)

## Got Pics?



We are looking for good quality fishing photos. Pack your camera along with your rod and reel, and capture those memorable images of your family and children fishing in Alaska, and please send us your photos. More information at: [www.wefishak.alaska.gov](http://www.wefishak.alaska.gov).

## Cover Photos

- **Main Image:** Rylen Monzingo with a sheefish.
- **Top Right:** A sea-run Dolly Varden caught on a fly. Photo by Brendan Scanlon.
- **Bottom Right:** Filleting a Klutina River king salmon. Photo by Corey Schwanke.

## An Alaska sport fishing license is required for all resident anglers 18 and older and nonresident anglers 16 and older to fish in all fresh and salt waters of Alaska.

- In accordance with the regulations outlined in this summary booklet, a sport fishing license allows you to take, or attempt to take, finfish or shellfish in the fresh or salt waters of Alaska. Additionally, you may need a King Salmon Stamp or a Harvest Record Card (see page 5).
- Your sport fishing license, PID or DAV must be in your possession while you are sport fishing.
- All persons engaged in sport fishing or in possession of sport caught finfish or shellfish must show their sport fishing license, required harvest record and/or stamp, and their harvest to any representative of ADF&G or any peace officer of the state, upon request.
- No person may alter, loan, or transfer to any other person any sport fishing license; and no person may use any license issued to another person.
- If your sport fishing, hunting, or trapping license is revoked in any state, you may not obtain an Alaska sport fishing license.

### A Resident of Alaska is a Person Who...

For the preceding 12 consecutive months, has maintained a home in Alaska with the intent to stay, and who is not claiming residency (or receiving benefits under a claim of residency) in another state, territory or country. Benefits include but are not limited to, applying for a resident fishing or hunting license in another state, obtaining a driver's license in another state, or receiving benefits or paying taxes as a resident of another state.

### Active Duty Military Personnel and Their Dependents...

- Stationed in Alaska for the preceding 12 months may purchase a resident sport fishing license regardless of benefits received in another state. Resident sport fishing regulations apply.
- Permanently stationed in Alaska for less than 12 months may purchase a nonresident military license and nonresident military annual king salmon stamp at reduced rates and are considered nonresidents. Nonresident sport fishing regulations apply.

If you have questions about your residency, call your local Alaska Wildlife Troopers (telephone numbers listed on page 93).

## License Fees | Alaska Residents

**Annual sport fishing license ..... \$20**

*Alaska residents 18 or older. Valid for the calendar year.*

**ADF&G Permanent (Senior) ID Card (PID)..... Free to qualifying residents**

**Alaska residents** 60 or older may apply for a PID for hunting, fishing, and trapping. For residents only - if you become a nonresident, your PID is no longer valid, requiring you to purchase a nonresident sport fishing license.

**ADF&G Disabled Veteran Card (DAV) ..... Free to qualifying residents**

**Alaska residents** who are disabled veterans (with disability of 50% or greater that was incurred during military service), may apply for a DAV for hunting and fishing. If you become a nonresident, your DAV is no longer valid, requiring you to purchase a nonresident sport fishing license.

**Sport fishing license for the blind ..... \$0.50**

*Affidavit required—available from license vendor or ADF&G.*

**Income restricted..... \$5**

*To be eligible for a low income license, an Alaskan resident must have an annual family or household income equal to or less than the most recent poverty guidelines for the state set by the U.S. Department of Health and Human Services for the year preceding application. A.S. 16.05.340 (a)(6)*

Visit: <http://www.adfg.alaska.gov/index.cfm?adfg=license.lowincome>

## License Fees | Nonresidents

1-day sport fishing license .....\$15

3-day sport fishing license .....\$30

7-day sport fishing license .....\$45

14-day sport fishing license.....\$75

Annual sport fishing license ..... \$100

*Residents of Yukon Territory may purchase nonresident licenses at Alaska resident license fees.*

### Nonresident Military License and Fee

**Nonresident annual military sport fishing license ..... \$20**

*Only for active duty members of military service permanently stationed in Alaska for less than 12 months or for dependent(s) of such.*

## HARVEST RECORD

Harvest records are required by **ALL** anglers when harvesting any species with an annual limit. Species with an annual limit are listed in the General Regulations section.

- Areas to record harvested species with an annual limit are printed on each sport fishing license.
- A harvest record card is required for resident anglers under 18, nonresident anglers under 16, and PID or DAV licensed anglers.
- Immediately upon landing and retaining a fish that has an annual limit, all anglers must enter the species, date, and location, IN INK, on the harvest record form on the back of their sport fishing license or their harvest record card.
- A person obtaining a duplicate or additional license or harvest record card must transfer their harvest records of species with annual limits previously landed during the current year to their new license or harvest record card.

Alaska Department of Fish & Game  
Division of Sport Fish  
**Sport Fishing  
Harvest Record Card**

Fill in the information below. See the back of this card for more instructions, or visit [www.adfg.alaska.gov](http://www.adfg.alaska.gov) for more information.

Name \_\_\_\_\_

Check ONE: ☐ Resident Senior ☐ Resident Disabled Veteran  
☐ Non-resident under 16 ☐ Resident under 18

Senior or DAV license number: \_\_\_\_\_

OR, if youth angler, age & birthday: \_\_\_\_\_

☐ Check here if this is a replacement for a lost card(s). By law, anglers must transfer **ALL** harvest information from the lost card(s) to this card.

DATE of harvest	NAME OF WATER where the fish was harvested	SPECIES OF fish harvested

Harvest Record Card

## LICENSES/STAMPS/HARVEST CARDS

**Sport fishing licenses and King Salmon Stamps** may be purchased online at: [www.adfg.alaska.gov/store](http://www.adfg.alaska.gov/store) or from a license vendor (most sporting goods stores).

**Harvest Record Cards** are available online at: [http://www.adfg.alaska.gov/static/license/sportlicense/pdf/sf\\_harvest\\_record\\_card.pdf](http://www.adfg.alaska.gov/static/license/sportlicense/pdf/sf_harvest_record_card.pdf), from ADF&G offices, and from fishing license vendors.

**PID/DAV licenses** – Apply online at: <http://www.adfg.alaska.gov/index.cfm?adfg=license.proxy>.

## KING SALMON STAMP

Anglers sport fishing for king salmon (except king salmon stocked in landlocked lakes) must purchase a current year's king salmon stamp. Stamps purchased online can be printed immediately. If you purchase a physical stamp, it must be signed across the face of the stamp, in ink, and stuck to the back of your sport fishing license.



**This is an example of a king salmon stamp purchased online.**

## King Salmon Stamp Fees

Resident king salmon stamp .....	\$10
Nonresident 1-day stamp .....	\$15
Nonresident 3-day stamp .....	\$30
Nonresident 7-day stamp .....	\$45
Nonresident 14-day stamp .....	\$75
Nonresident annual stamp .....	\$100
Nonresident military annual stamp .....	\$30
Duplicate stamp .....	\$5

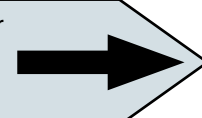
### The following persons do not need a king salmon stamp:

- Resident anglers under 18 and nonresident anglers under 16.
- Residents who possess an ADF&G PID or a DAV card.
- Residents with the \$5 income restricted license.
- Residents with the 50¢ license for the blind.



Use our secure server to buy your licenses, stamps, and tags online!

[www.adfg.alaska.gov/store/](http://www.adfg.alaska.gov/store/)



## HARVEST RECORD REQUIREMENTS

- **Harvest records** are required when angling for any species with an annual limit.
- A harvest record form is printed on the sport fishing license. For anglers who do not require a sport fishing license, free harvest reporting cards are available online at [https://www.adfg.alaska.gov/static/license/sportlicense/pdf/sf\\_harvest\\_record\\_card.pdf](https://www.adfg.alaska.gov/static/license/sportlicense/pdf/sf_harvest_record_card.pdf) or from ADF&G offices and from fishing license vendors.
- Annual limits are listed in the General and Special Regulations for each area.
- Immediately upon landing and retaining a fish that requires harvest recording, anglers must enter the species, date, and location, IN INK, on the back of their sport fishing license or on the harvest record card.

## DATA COLLECTION REQUIREMENTS

- Upon request by a Department representative or state peace officer, anglers must forfeit the heads of any salmon or trout with external or internal tags and all fish that are adipose finclipped along with the date and location of where caught.

## LIABILITY FOR VIOLATIONS

- Unless otherwise provided by regulation or statute, a person who violates a provision of these regulations is strictly liable for the offense, regardless of that person's intent.

## PROHIBITED ACTS

### CLOSED WATERS/WATERS CLOSED TO SPORT FISHING:

- Unless otherwise provided by area regulations: (a) the waters within 300 feet of a fish weir or fish ladder are closed to sport fishing, unless a lesser or greater distance is indicated by Department markers; and (b) it is unlawful to cast, drift, or place by any means a hook, bait, lure, or fly into waters closed to sport fishing.

### SALE OF SPORT-CAUGHT FISH PROHIBITED:

- No person may buy, sell, or barter sport-caught fish or their parts.

### POSSESSION OR MARKING OF LIVE FISH OR LIVE FISH EGGS:

- It is unlawful to possess, transport, release live fish or live fish eggs, or in any way mark any live fish prior to release;
- Except in accordance with the terms of a permit that may be issued by the Commissioner under 5 AAC 41 or AS 16.05.930(a),
- Or in accordance with sport fishing provisions listed on page 7 under "Use of sport-caught fish as bait."

### FELT-SOLED BOOTS PROHIBITED:

- The use of footwear with absorbent felt or other fibrous material on the soles is prohibited while sport fishing in fresh water.

### GAFFS PROHIBITED:

- A gaff may not be used to puncture any fish intended or required to be released.

### MOLESTING OF FISH:

- Molesting or impeding spawning or the natural movement of fish contrary to lawful methods and means of sport fishing is prohibited.

### SNAGGING IN FRESH WATER PROHIBITED:

- It is unlawful to intentionally snag or attempt to snag any fish in fresh water.
- "Snag" means to hook a fish elsewhere than in its mouth. A fish unintentionally hooked elsewhere than its mouth must be released immediately.
- Unless otherwise prohibited under area regulation, snagging is allowed in saltwater.

### WASTE OF FISH:

- The intentional waste or destruction of any species of sport-caught fish is prohibited.

### USE OF EXPLOSIVES OR TOXICANTS:

- The use of any toxicant or explosive is prohibited in the taking of any fish in the waters of Alaska. Except that a shaft tipped with an explosive charge (commonly known as a bangstick or powerhead) or a firearm may be used on board a vessel in saltwater to dispatch a fish caught with legal gear.

## METHODS AND MEANS

### FRESHWATER SPORT FISHING:

Fish may not be taken in fresh water by means of:

- Fixed or weighted hooks and lures (except those of standard manufacture);
- Multiple hooks with gap between point and shank larger than one-half inch;
- Spear, unless permitted by area regulations; or arrow, unless permitted by area regulations.

### SPORT FISHING GEAR:

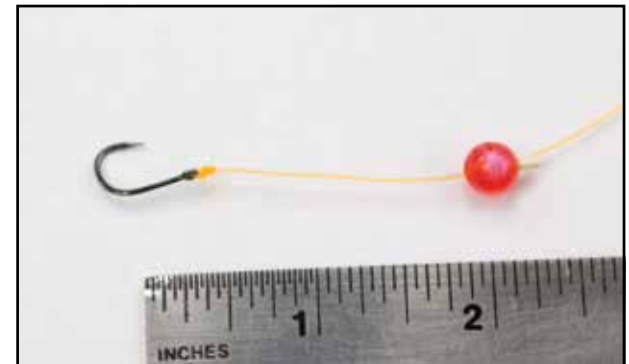
Unless otherwise provided in regulation, sport fishing may be conducted only by use of:

- A closely attended single line attached to not more than one plug; one spoon; one spinner or series of spinners; two artificial flies; or two hooks.
- The line must be closely attended, unless unattended setlines for burbot are allowed per area regulations.

### USE OF ATTRACTOR (BEAD):

An attractor, including a bead, when used with an artificial fly, artificial lure, or bare hook, must be:

- Either fixed within two inches of the bare hook, fly, or lure,
- Or be free sliding on the line or leader.
- A bead fished on the line above a bare single hook is legal gear in waters where only flies may be used.





## METHODS AND MEANS (CONTINUED)

### USE OF UNDERWATER SPEAR (SALTWATER):

- In salt water, spears and spearguns may be used to take fish, subject to applicable seasons and limits, by persons who are completely submerged, provided that the spear or speargun is not tipped with an explosive charge.

### ICE FISHING GEAR:

- Sport fishing through the ice is permitted using two closely attended lines, provided only one hook or artificial lure is used on each line, except that additional gear may be used for northern pike and burbot as specified in statewide or area regulations.
- The maximum number of lines/hooks that an angler may deploy is not cumulative and is equal to the maximum number of lines/hooks allowed for any species. The number of lines/hooks used to target a species may not exceed the number allowed for that species. An example would be in a lake where regulations allow 5 set lines for burbot and 2 lines under the ice for lake trout, the maximum number of lines you may fish is 5 (3 set lines and 2 closely attended lines under the ice for lake trout or other species).

### SPORT FISHING GEAR FOR NORTHERN PIKE:

- Unless otherwise provided by the area regulations, northern pike may be taken by spear.

### SPORT FISHING GEAR FOR HERRING AND SMELT:

- In salt water, herring and smelt may be taken with the use of 15 or less unbaited single or multiple hooks attached to a single line.



### SPORT FISHING GEAR FOR BURBOT:

Unless otherwise provided by area regulations, burbot may be taken in fresh water with more than one line and hook, provided:

- The total aggregate number of hooks may not exceed 15 or the daily bag limit for burbot in the waters being fished, whichever is less;
- Hooks are single hooks with gap between point and shank larger than  $\frac{3}{4}$  inch;
- Each hook is set to rest on the bottom of the lake or stream;
- Each line is identified with angler's name and address;
- Each line is physically inspected at least once in each 24-hour period.

### POSSESSION OF SPORT-CAUGHT FISH (EXCEPT HALIBUT)

- Sport-caught fish, their parts, and articles manufactured from such fish may be possessed within the state by any person at any time, and may be transported within and exported out of the state by any person at any time, except that no person may possess any unpreserved fish, or part of one, not legally taken by the angler, unless the angler furnishes, upon request of any peace officer of the state, a statement signed by the person taking the fish stating the type of fish, number of fish, location, date taken, and license number. See Transfer of Possession Form on page 47. The statement is unnecessary if the person possessing the fish is accompanied by the person who took the fish. No person may possess fish which were not legally taken.
- A person may possess only the limit of fish allowed for the water on which that person is fishing.
- Upon request by an employee of the Department, or a peace officer of the state, a person must present for inspection any fish taken or possessed by the person in a sport fishery.
- Upon request by an employee of the Department or a peace officer of the state, a person while taking fish must present for inspection any apparatus designed to be or capable of being used to take fish in a sport fishery.

### POSSESSION OF SPORT-CAUGHT HALIBUT

- Pacific halibut fisheries are managed by the federal government under international treaty.
- Federal possession and landing requirements for sport-caught halibut differ from state regulations. Possession includes unpreserved AND preserved fish for halibut.
- Consult federal regulations for: bag, size, and possession limits for guided (charter) anglers; possession and landing requirements.
- Federal halibut regulations are available from: NOAA Fisheries Alaska Region, (907) 586-7228  
<https://alaskafisheries.noaa.gov/fisheries/sport-halibut>

### USE OF SPORT-CAUGHT FISH AS BAIT

- Unless provided for in this section, fish taken under sport fishing regulations may not be used as bait, except:
  - Herring and whitefish may be used as bait,
  - Species for which bag limits, seasons, or other regulatory methods and means are not provided in sport fishing regulations may be used as bait,
  - The head, tail, fins, and viscera of legally taken sport fish, may be used as bait.
- Live herring and other species for which no seasonal or harvest limits are specified in sport fishing regulations may be used as live bait in salt water.
- Live fish may not be used as bait for sport fishing in fresh water.
- Live bait may be possessed, transported, or released only in the salt waters of the regulatory area in which it was taken.

*The following are some of the definitions set forth in AS 16.05.940, 5 AAC 75.020, and 5 AAC 75.995.*

**AREA**—Means a regulatory management area as described in 5 AAC 47-5 AAC 74.

**ARTIFICIAL FLY**—A fly which is constructed by common methods known as fly tying, including a dry fly, wet fly, and nymph, or a bare single hook that is free of bait as defined in 5 AAC 75.995. Materials and chemicals designed and produced primarily to cause flies to float or sink may be used on artificial flies.

**ARTIFICIAL FLY (UNWEIGHTED)**—A fly which weighs less than one-fourth ounce in its entirety.

**ARTIFICIAL LURE**—Any lure which is man-made, free of bait as defined in 5 AAC 75.995, and is used to attract fish. This includes an artificial fly.

**BAG LIMIT**—The maximum legal take of fish per person per day, in the area in which the person is fishing, even if part or all of the fish are immediately preserved; a fish when landed and not immediately released becomes a part of the bag limit of the person who originally hooked it.

- The per person, per day bag limit applies across fisheries. You cannot take a bag limit of fish from one area then move to another area and take another limit there. However, if the bag limit of a specific species is higher in a particular area (for example, 6 fish per day in one area and 3 per day of the same species in another) you can take 3 fish from one area and move to the area with the higher bag limit and take 3 from there. **If you have questions, please call ADF&G at 907-459-7200.**

**BAIT**—Any substance applied to fishing gear for the purpose of attracting fish by scent, including fish eggs in any form, natural or preserved animal, fish, fish oil, shellfish, or insect parts, natural or processed vegetable matter, and natural or synthetic chemicals.

**CHAR**—All char, including Dolly Varden, Arctic char, lake trout (Mackinaw), and eastern brook trout.

**CHARTER VESSEL**—A vessel licensed under AS 16.05.490, used for hire in the sport, personal use, or subsistence taking of fish or shellfish, and not used on the same day for any other commercial fishing purpose; a charter vessel does not include a vessel or skiff without a charter vessel operator.

**CHARTER VESSEL OPERATOR**—A person engaged in carrying passengers on a charter vessel for any valuable consideration that passes directly or indirectly to the vessel's owner, operator, or a person with a financial interest in the vessel, in consideration of the carriage of any person on board.

**CLOSED SEASON**—The time during which fish may not be taken (this includes catch-and-release fishing).

**CLOSED WATERS**—Waters designated by the Board of Fisheries wherein it is illegal to take fish.

**CLOSELY ATTENDED LINE**—That the line or strike indicator is within the view of and is accessible to the angler at all times.

**DRAINAGE**—All of the waters comprising a watershed including tributary rivers, streams, sloughs, ponds, and lakes which contribute to the water supply of the watershed.

**FISHING ROD**—A tapered, flexible rod typically used for sport fishing, equipped with a hand grip and a line guide system that guides the line from the reel to the tip of the rod, and upon which is mounted a fishing reel used to deploy and retrieve the sport fishing line.

**FLOWING WATERS**—Means all fresh waters, excluding lakes and ponds, that have detectable current, including creeks, streams, and rivers draining into, between, and out of all lakes and ponds, and all intertidal waters upstream of the stream mouth.

**FRESH WATER**—All inland waters; inland waters are separated from salt water at the mouths of creeks, streams, and rivers at a line between extremities of the latter's banks at a mean low tide or at a point to be determined and adequately marked by the Department.

**LENGTH OF FISH**—The length from the tip of the snout to the tip of the tail (total length).

**LOCAL REPRESENTATIVE OF THE DEPARTMENT**—

(a) The nearest most accessible professional employee of the Department, (b) a person designated by the Commissioner or by a professional employee of the Department to perform specific functions for the Department, or (c) a law enforcement officer of the Department of Public Safety.

**MARK OR MARKING**—All forms of skin alteration, fin clipping, or other mutilation, or insertion of foreign materials in live fish that permit later identification.

**MESH SIZE (STRETCH MESH SIZE, STRETCH MEASURE)**—The average length of any series of 10 consecutive meshes measured from inside the first knot and including the last knot when wet; the 10 meshes, when being measured, shall be an integral part of the net, as hung, and measured perpendicular to the selvages; measurement shall be made by means of a metal tape measure while the 10 meshes being measured are suspended vertically from a single peg or nail, under five pound weight, except as otherwise provided in this title.

**MOLESTING**—The harassing, disturbing, or interfering with fish by any means, including the use of any missile or object not established as legal gear; molesting includes dragging, kicking, throwing, striking, or otherwise abusing a fish which is intended to be released.

**MULTIPLE HOOK**—A fish hook with two or more points with or without barbs.

**OPEN SEASON**—The time during which fish may lawfully be taken; each period of time prescribed as an open season shall be construed to begin at 12:01 a.m. on the first day and end at midnight of the last day thereof.

**PEACE OFFICER OF THE STATE**—(a) An employee of ADF&G authorized by the Commissioner; (b) a police officer in the state; or (c) any other person authorized by the Commissioner.

**POSSESSION LIMIT**—The maximum number of unpreserved fish a person may have in possession.

**POWER ASSISTED FISHING REEL**—A reel used to deploy and retrieve the sport fishing line that is operated or assisted by any electronic hydraulic, or other mechanical power source other than by hand-cranking a handle attached to the reel.

**PRESERVED FISH**—Fish prepared in such a manner, and in an existing state of preservation, as to be fit for human consumption after a 15-day period, and does not include unfrozen fish temporarily stored in coolers that contain ice, dry ice, or fish that are lightly salted.



## DEFINITIONS (CONTINUED)

**REEL SEAT**—An attachment mechanism that holds the fishing reel to the rod using locking, threading rings, sliding bands, or other attachment devices and is designed to allow the reel to be readily detached from the fishing rod.

**ROCKFISH**—Includes all fish of the genus *Sebastes*, and does not include Irish lords, other sculpins, greenlings or lingcod.

**SALMON**—All salmon, including the five species of Pacific salmon: coho (silver), chum (dog), Chinook (king), pink (humpy), and sockeye (red).

**SALT WATER**—All marine waters; marine waters are separated from fresh water at the mouths of streams, rivers, and creeks.

**SET LINE**—An unattended line or lines that have been set, staked, anchored or otherwise fixed.

**SINGLE HOOK**—A fish hook with only one point with or without a barb.

**SNAG**—To hook a fish elsewhere than in its mouth.

**SPORT FISHING**—The taking of or attempting to take for personal use, and not for sale or barter, any fresh water, marine, or anadromous fish by hook and line held in the hand, or by hook and line attached to a pole or rod which is held in the hand or closely attended, or by other means defined by the Alaska Board of Fisheries.

**SPORT FISHING GUIDE**—A person who is licensed to provide sport fishing guide services to persons who are engaged in sport fishing.

**SPORT FISHING GUIDE SERVICES**—Assistance, for compensation or with the intent to receive compensation, to a sport fisherman to take or attempt to take fish by accompanying or physically directing the sport fisherman in sport fishing activities during any part of a sport fishing trip; however, the term does not include sport fishing services or services provided by an assistant, deckhand, or similar person who works directly under the supervision of and on the same vessel as a sport fishing guide.

**SPORT FISHING SERVICES**—The indirect provision of assistance, for compensation or with the intent to receive compensation, to a person engaged in sport fishing in taking or attempting to take fish or shellfish by a business that employs a sport fishing guide to provide sport fishing guide services to the person during any portion of a sport fishing trip; sport fishing services does not include an activity for which a sport fishing guide license is required, or booking and other ancillary services provided by a tour broker or agent to a sport fishing services operator.

**STREAM MOUTH**—The downstream point defined as a straight line running from the most downstream extremity on one stream bank to the most downstream extremity on the other stream bank, or a point defined and marked by the Department.

**TAKE**—Taking, pursuing, fishing, or in any manner disturbing, capturing, or killing or attempting to take, pursue, fish, or in any manner capture or kill fish or shellfish.

**TOXICANT**—Any material or chemical that upon introduction to the waters of Alaska by direct or indirect means will kill, stun, or drive fish from their natural repose.

**TRANSPORT**—Ship, transport, carry, import, export, or receive or deliver for shipment, transportation, carriage, or export.

**TROUT**—Includes rainbow, steelhead, and cutthroat.

**WATERS OF ALASKA**—Has the same meaning as set out in 5 AAC 39.975(13).

**YEAR**—The calendar year from January 1 through December 31.

*Get the latest fishing info emailed to you.*

Sign up at: [www.wefishak.alaska.gov](http://www.wefishak.alaska.gov)

Fishing Reports ➤ Advisory Announcements ➤ Emergency Orders

## THE FISH & WILDLIFE SAFEGUARD PROGRAM



*Report Violations*

1-800-478-3377

If you witness or suspect that a fish or wildlife violation has occurred, please call our toll-free number. You will not have to reveal your name, testify in court, or sign a deposition. You will remain anonymous, and you may receive a reward.

Local Alaska Wildlife Troopers' office phone numbers are as follows:

Anchorage . . . . .	269-5954
Cantwell . . . . .	768-4050
Delta Junction . . . . .	895-4681
Fairbanks . . . . .	451-5350
Glennallen . . . . .	822-3263
Mat-Su West . . . . .	373-8305
Palmer . . . . .	745-4247
Seward . . . . .	224-3935
Soldotna . . . . .	262-4573
Tok . . . . .	888-4471
Valdez . . . . .	835-4307

## KUSKOKWIM-GOODNEWS DRAINAGES

<b><i>Fresh and Salt Waters Special Regulations</i></b>	<b><i>Page</i></b>
Aniak River drainage .....	14
Holitna River drainage .....	14
Kasigluk River drainage .....	14
Kisaralik River drainage .....	14
Kuskokwim River drainage (downstream of and including Holitna R & Kuskokwim Bay) .....	14
Kwethluk River drainage .....	14
Arolik River drainage .....	15
Goodnews River drainage .....	15
Kanektok River drainage .....	15

## NORTH SLOPE DRAINAGES

<b><i>Fresh and Salt Waters Special Regulations</i></b>	<b><i>Page</i></b>
Trans Alaska Pipeline Corridor .....	17

## NORTHWESTERN DRAINAGES

<b><i>Fresh and Salt Waters Special Regulations</i></b>	<b><i>Page</i></b>
Cripple River drainage .....	19
Kobuk River drainage .....	19
Nome River .....	19
Northern Norton Sound drainages .....	19
Penny River .....	19
Pilgrim River drainage .....	19
Salmon Lake .....	19
Selawik River drainage .....	19
Snake River drainage .....	19
Solomon River .....	19
Unalakleet River drainage .....	19

## YUKON RIVER DRAINAGE

<b><i>Fresh and Salt Waters Special Regulations</i></b>	<b><i>Page</i></b>
Dall River area .....	21
Innoko River drainage .....	21
Little Dall River drainage .....	21
Nome Creek (Beaver Creek drainage) .....	21
Nowitna River drainage .....	21
Trans-Alaska Pipeline Corridor .....	21
Yukon River drainage (Tanana R to Hodzana R) .....	21

## TANANA RIVER DRAINAGE

<b><i>Special Regulations</i></b>	<b><i>Page</i></b>
Badger/Chena Slough .....	25
Chatanika River drainage .....	25
Chena River drainage .....	25
Clearwater Lake drainage .....	25
Delta River drainage .....	25
Delta Clearwater River .....	25
Fielding Lake .....	25
Five-Mile Clearwater Creek .....	26
George Lake .....	26
Goodpaster River drainage .....	26
Grizzly Lake .....	26
Harding Lake .....	26
Jack Lake .....	26
Kantishna River drainage .....	26
Piledriver Slough .....	26
Rainbow Lake .....	26
Richardson Clearwater River drainage .....	26
Salcha River drainage .....	26

## Tanana River Drainage Continued...

	<b><i>Page</i></b>
Shaw Creek drainage .....	26
Stocked lakes .....	26
T Lake .....	27
Tanana River .....	27
Tangle Lakes drainage .....	27
Toklat River drainage .....	27
Tok River drainage .....	27
Tolovana River drainage .....	27
Volkmar Lake .....	27

## UPPERCOPPER-UPPERSUSITNADRAINAGES

<b><i>Special Regulations</i></b>	<b><i>Page</i></b>
Chitina River drainage .....	30
Chokosna River .....	30
Copper River drainage .....	30
Copper River mainstem .....	30
Fish Creek (Mentasta Lake tributary) .....	30
Gakona River drainage .....	30
Gilahina River .....	30
Hanagita River drainage .....	30
Hudson Lake .....	30
Indian Creek (Copper River drainage) .....	30
Lake Louise .....	30
Lakina River .....	30
Mendeltna Creek drainage .....	30

## Upper Copper-Upper Susitna Continued...

	Page
Mendeltna Creek drainage lakes.....	30
Moose Creek (Tazlina River drainage) .....	30
Moose Lake (Tazlina River drainage).....	31
Our Creek (Moose Lake tributary) .....	31
Sinona Creek.....	31
Slana River.....	31
Slana River drainage .....	31
Stocked lakes .....	31
Summit Lake & Bridge Creek .....	31
Susitna Lake.....	31
Susitna River drainage (upstream of Oshetna River) .	31
Tazlina Lake tributaries.....	31
Tebay River .....	31
Tolsona Lake .....	31
Tyone Lake.....	31
Tyone River drainage flowing waters .....	31
Tyone River drainage lakes.....	31

## Gulkana River Drainage Special Regulations

Crosswind Lake .....	34
Dickey Lake .....	33
Fish Creek and Fish Lake (Gulkana River drainage)..	33
Gulkana River drainage .....	32
Gulkana River – East Fork.....	33
Gulkana River mainstem – lower river .....	34
Gulkana River mainstem – upper river .....	34
Gulkana River – Middle Fork.....	34
Gulkana River – West Fork.....	34
Gunn Creek drainage .....	33
Hungry Hollow Creek (Gulkana River drainage).....	33
Paxson Lake .....	33

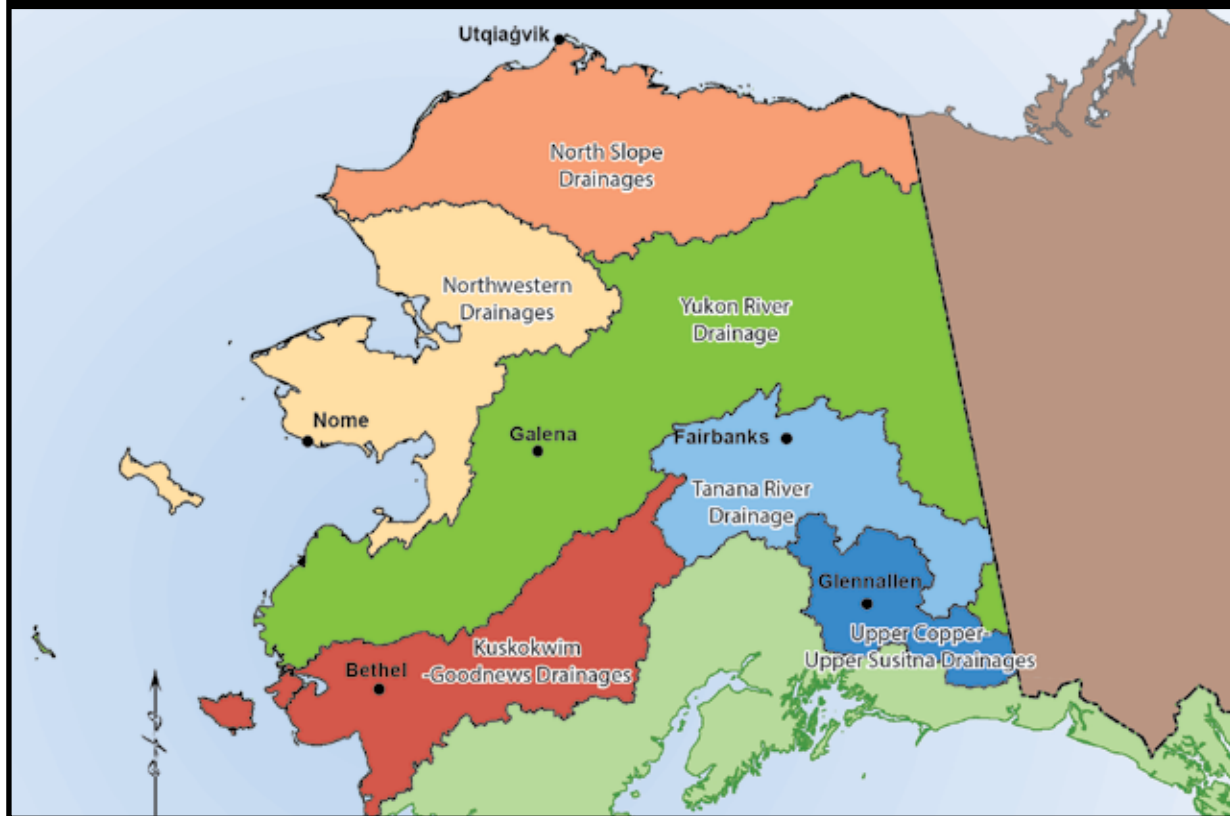
Paxson Lake Outlet stream .....	33
Summit Lake (Gulkana River drainage).....	33
Tenmile Lake (Gulkana River drainage).....	34
Twelvemile Creek (Gulkana River drainage) .....	33

## Klutina & Tonsina River Drainages Special Regulations

Bernard Creek .....	36
Klutina Lake and tributaries.....	36
Klutina River drainage.....	36

Klutina River drainage lakes.....	36
Little Tonsina River .....	36
Manker Creek (Klutina River drainage) .....	36
Tonsina Lake tributaries.....	36
Tonsina River drainage .....	36
Tonsina River drainage – downstream of lake.....	36
Tonsina River drainage – downstream of pipeline.....	36
Tonsina River tributaries.....	36

## NORTHERN ALASKA MANAGEMENT AREAS



LICENSING &  
REGIONAL  
REGULATIONS

KUSKOKWIM  
- GOODNEWS  
DRAINAGES

NORTH SLOPE  
DRAINAGES

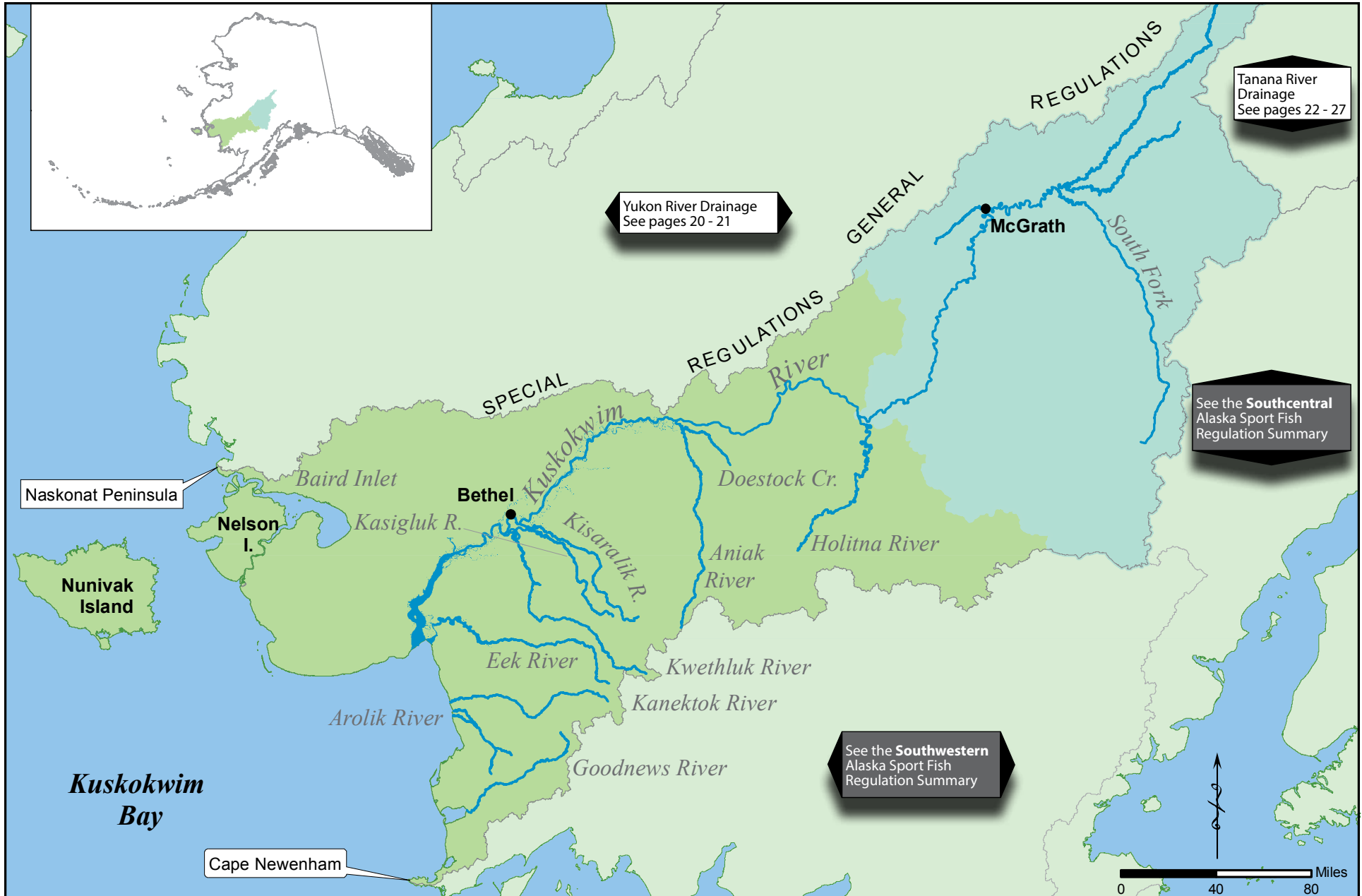
NORTHWESTERN  
DRAINAGES

YUKON RIVER  
DRAINAGE

TANANA RIVER  
DRAINAGE

UPPER COPPER -  
UPPER SUSITNA  
DRAINAGES





## General Regulations - Kuskokwim

**Inclusive waters:** The Kuskokwim - Goodnews Area consists of all waters of the Kuskokwim River drainage, and all waters draining into, and including, the Bering Sea and Kuskokwim Bay south of the westernmost point of the Naskonat Peninsula and north of Cape Newenham.

**Fishing for all species is open year-round unless otherwise noted below or in Special Regulations.**

### **KING SALMON**

- 20 inches or longer—3 per day, 3 in possession—only 2 of which may be 28 inches or longer.
- Less than 20 inches—10 per day, 10 in possession.

### **OTHER SALMON**

- 5 per day, 5 in possession, no size limit.

### **ARCTIC CHAR, DOLLY VARDEN & LAKE TROUT**

- All lakes:
  - 2 per day, 2 in possession—in combination, no size limit.
- Flowing and salt waters:
  - 10 per day, 10 in possession—only 2 of which may be 20 inches or longer and only 2 may be lake trout.

### **RAINBOW TROUT**

- 2 per day, 2 in possession—only 1 of which may be 20 inches or longer.

### **ARCTIC GRAYLING**

- 5 per day, 5 in possession, no size limit.

### **SHEEFISH**

- 10 per day, 10 in possession, no size limit.

### **NORTHERN PIKE**

- 10 per day, 10 in possession, no size limit.

### **BURBOT**

- 15 per day, 15 in possession, no size limit.

## **OTHER FINFISH**

- No limit.

## **SHELLFISH**

- See pages 39-40.

## **HALIBUT**

Pacific halibut fisheries are managed by the federal government under international treaty. See page 7 for federal contact information.

- **Season:** February 1 - December 31.
- **Unguided anglers:** 2 per day, 4 in possession.
- **Consult federal regulations for the following:**
  - 1) Bag, size, and possession limits for guided (charter) anglers.
  - 2) Possession and landing requirements.
  - 3) Inseason changes to the regulations.
- **Filleting requirements for fish cleaned at sea:** No person shall possess on board a vessel, including charter vessels and pleasure craft used for fishing, Pacific halibut that have been filleted, mutilated, or otherwise disfigured in any manner, except that each Pacific halibut may be cut into no more than 2 ventral pieces, 2 dorsal pieces, and 2 cheek pieces, with a patch of skin on each piece, naturally attached.

## Methods and Means - Kuskokwim

### **Hook Size:**

- Multiple hooks with a gap between point and shank larger than ½ inch may be used for taking fish other than salmon, except where noted.

### **Use of spears or bow and arrows:**

- Suckers and burbot may be taken with spear or bow and arrow the entire year.
- **September 1–April 30:** Northern pike or whitefish (excluding sheefish) may be taken by spear or bow and arrow during any open season for northern pike or whitefish, or may be speared by persons completely submerged during any open season for northern pike or whitefish.

*Get the latest fishing info  
emailed to you.*

Sign up at: [www.wefishak.alaska.gov](http://www.wefishak.alaska.gov)

Fishing Reports ➤ Advisory Announcements ➤ Emergency Orders



Rafters on the Kisaralik.

## Special Regulations - Kuskokwim

**Aniak River drainage:**

- Open to fishing year-round.
- Salmon limits (all species): In the Aniak River drainage, the per day *aggregate bag limit* for salmon is 3 fish (combination of king, sockeye, chum, coho, and pink salmon), of which no more than 2 may be king salmon.
- King salmon limits: 20 inches or longer—2 per day, 2 in possession.
  - **There is an annual limit of 2 king salmon 20 inches or longer. Immediately upon landing and retaining a king salmon 20 inches or longer, you must fill out a harvest record; see page 5.**
- Sockeye, chum, coho, and pink salmon (in combination) limits: 3 per day, 3 in possession.
- Arctic char/Dolly Varden limits: In flowing waters, 3 per day, 3 in possession no size limit.
- Rainbow trout: Rainbow trout retention prohibited. All rainbow trout must be released immediately.
- Arctic grayling limits: 2 per day, 2 in possession, no size limit.
- Sheefish limits: 2 per day, 2 in possession, no size limit.
- **In all flowing waters upstream of Doestock Creek:**
  - Only 1 unbaited, single hook, artificial lure or fly may be used year-round.

**Holitna River drainage:**

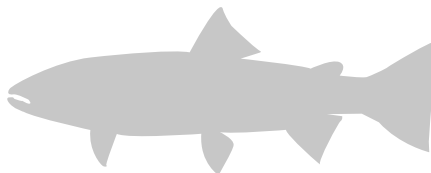
- Open to fishing year-round.
- Arctic char/Dolly Varden limits: In flowing waters, 3 per day, 3 in possession, no size limit.
- Arctic grayling limits: 2 per day, 2 in possession, no size limit.
- Sheefish limits: 2 per day, 2 in possession, no size limit.

**Kasigluk River drainage:**

- Open to fishing year-round.
- Rainbow trout limits: 2 per day, 2 in possession, only 1 of which may be 20 inches or longer.
  - **There is an annual limit of 2 rainbow trout 20 inches or longer. Immediately upon landing and retaining a rainbow trout 20 inches or longer, you must fill out a harvest record; see page 5.**
- **In all flowing waters:**
  - Only 1 unbaited, single hook, artificial lure or fly may be used year-round.

**Kisaralik River drainage:**

- Open to fishing year-round.
- Rainbow trout limits:
  - In all flowing waters upstream of the Akiak Village Lodge site (60° 49.5' N, 160° 55.0' W), rainbow trout retention prohibited. All rainbow trout must be released immediately.
  - In all flowing waters downstream of the Akiak Village Lodge site (60° 49.5' N, 160° 55.0' W), 2 per day, 2 in possession, only one of which may be 20 inches or longer.
    - **There is an annual limit of 2 rainbow trout 20 inches or longer. Immediately upon landing and retaining a rainbow trout 20 inches or longer, you must fill out a harvest record; see page 5.**
- **In flowing waters upstream of the Akiak Village Lodge site (60° 49.5' N, 160° 55.0' W):**
  - Only 1 unbaited, single hook, artificial lure or fly may be used year-round.

**Kwethluk River drainage:**

- Open to fishing year-round.
- Rainbow trout limits: 2 per day, 2 in possession, only one of which may be 20 inches or longer.
  - **There is an annual limit of 2 rainbow trout 20 inches or longer. Immediately upon landing and retaining a rainbow trout 20 inches or longer, you must fill out a harvest record; see page 5.**
- **In flowing waters upstream of the confluence of the Kwethluk River and Pulamaneq (Pocahontas) Creek (60° 31.96' N, 161° 05.47' W):**
  - Only 1 unbaited, single hook, artificial lure or fly may be used year-round.

**Kuskokwim River drainage** (*downstream of a point located ¼ mile upstream of the confluence of the Kuskokwim River with the Holitna River, and all waters draining into Kuskokwim Bay south of the Kuskokwim River*):

- King salmon: Open to fishing year-round. However, king salmon may only be retained **May 1–July 25**.
- Arctic char/Dolly Varden limits: In flowing waters, 5 per day, 5 in possession, only 2 of which may be 20 inches or longer.
- Sheefish limits: 5 per day, 5 in possession, no size limit.
- Northern pike limits: 5 per day, 5 in possession, only 1 of which may be 30 inches or longer.



Camping on the Kwethluk.



### Arolik River drainage:

- Open to fishing year-round.
- Arctic char/Dolly Varden limits: In flowing waters, 3 per day, 3 in possession, no size limit.
- Rainbow trout limits: 2 per day, 2 in possession, only one of which may be 20 inches or longer.
  - **There is an annual limit of 2 rainbow trout 20 inches or longer. Immediately upon landing and retaining a rainbow trout 20 inches or longer, you must fill out a harvest record; see page 5.**
- Arctic grayling limits: 2 per day, 2 in possession, no size limit.

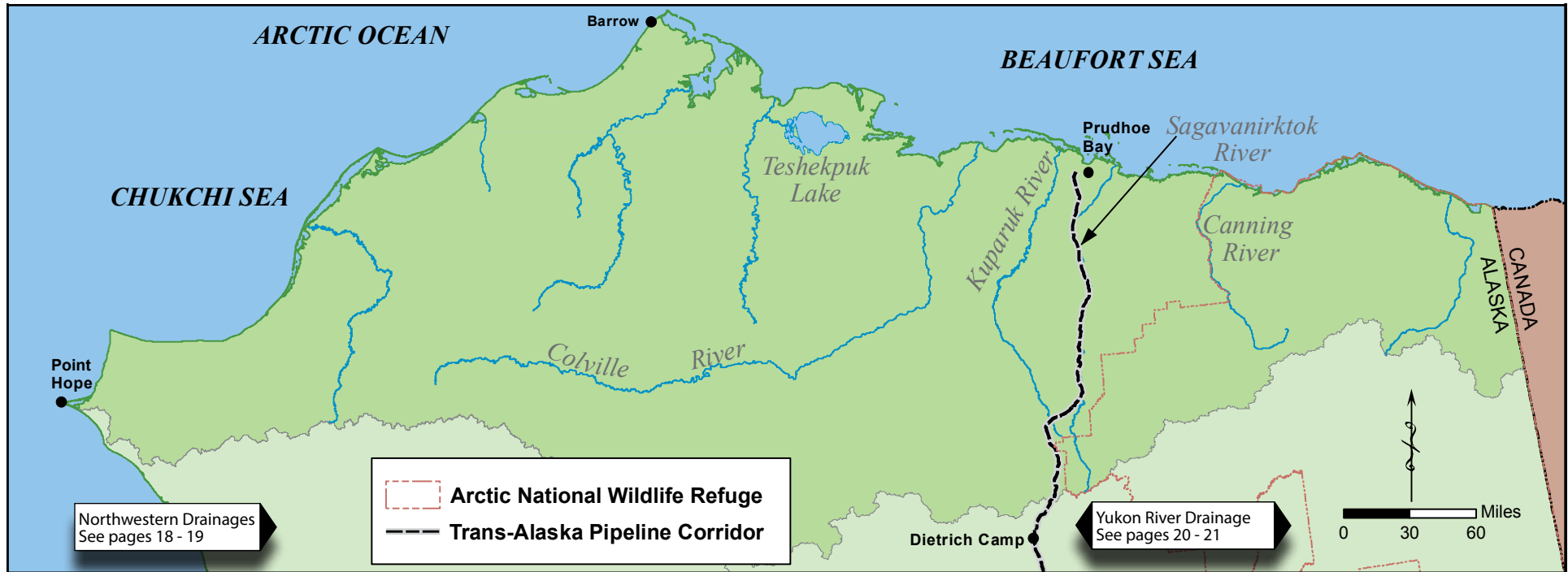
### Goodnews River drainage:

- Open to fishing year-round.
- Arctic char/Dolly Varden limits: In flowing waters, 3 per day, 3 in possession, no size limit.
- Arctic grayling limits: 2 per day, 2 in possession, no size limit.
- **In all flowing waters:**
  - Only 1 unbaited, single hook, artificial lure or fly may be used year-round.
- **In all flowing waters downstream of the Togiak National Wildlife Refuge wilderness boundary:**
  - No person may sport fish from a boat or the river bank within 300 ft of a legally operating subsistence gillnet.

### Kanektok River drainage:

- Open to fishing year-round.
- Rainbow trout limits:
  - **June 8–October 31:** Rainbow trout retention prohibited. All rainbow trout must be released immediately.
  - **November 1–June 7:** 2 per day, 2 in possession—only one of which may be 20 inches or longer.
- Arctic char/Dolly Varden limits: In flowing waters, 3 per day, 3 in possession, no size limit.
- Arctic grayling limits: 2 per day, 2 in possession, no size limit.
- **In all flowing waters:**
  - Only 1 unbaited, single hook, artificial lure or fly may be used year-round.
- **In all flowing waters downstream of the Togiak National Wildlife Refuge wilderness boundary:**
  - No person may sport fish from a boat or the river bank within 300 ft of a legally operating subsistence gillnet.





## General Regulations - North Slope

**Inclusive waters:** The North Slope Area consists of all northerly flowing waters, including lakes, draining into, and including, the Arctic Ocean, the Beaufort Sea, and the Chukchi Sea, west of the Canadian border and east of Point Hope.

**Fishing for all species is open year-round unless otherwise noted below or in Special Regulations.**

### **KING SALMON**

- 20 inches or longer—3 per day, 3 in possession—only two of which may be 28 inches or longer.
- Less than 20 inches—10 per day, 10 in possession.

### **OTHER SALMON**

- 10 per day, 10 in possession, no size limit.

### **ARCTIC GRAYLING**

- 5 per day, 5 in possession, no size limit.

### **SHEEFISH**

- 10 per day, 10 in possession, no size limit.

### **ARCTIC CHAR, DOLLY VARDEN & LAKE TROUT**

- All lakes:
  - 2 per day, 2 in possession—in combination, no size limit.
- Flowing and salt waters:
  - 10 per day, 10 in possession—only 2 of which may be 20 inches or longer and only 2 may be lake trout.

### **NORTHERN PIKE**

- 10 per day, 10 in possession, no size limit.

### **BURBOT**

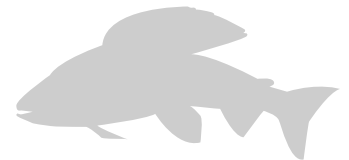
- 15 per day, 15 in possession, no size limit.

### **OTHER FINFISH**

- No limit.

### **SHELLFISH**

- See pages 39-40.



***Get the latest fishing info emailed to you.***

**Sign up at: [www.wefishak.alaska.gov](http://www.wefishak.alaska.gov)**

## Methods and Means - North Slope

### Hook Size:

- Multiple hooks with a gap between point and shank larger than ½ inch may be used for taking fish other than salmon, except where noted.

### Use of spears or bow and arrows:

- Suckers and burbot may be taken with spear or bow and arrow year-round.
- September 1–April 30:** Northern pike or whitefish (excluding sheefish) may be taken by spear or bow and arrow during any open season for northern pike or whitefish, or may be speared by persons completely submerged during any open season for northern pike or whitefish.

## Special Regulations - North Slope

Unless listed below, seasons, bag and possession limits for North Slope drainages appear above under General Regulations.

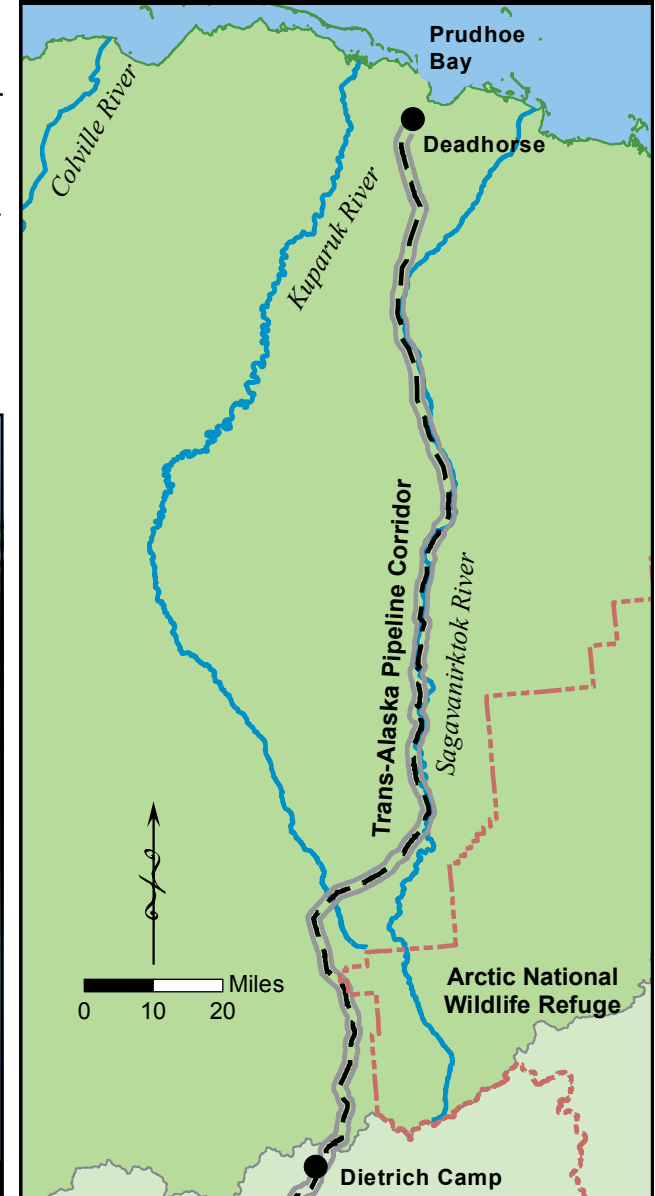
**Trans-Alaska Pipeline corridor** (a corridor the length of the Pipeline north of the Yukon River extending 5 miles on either side of the Dalton Highway):

- Open to fishing year-round for species other than salmon.
- Closed year-round to salmon fishing.** All salmon caught must be released immediately.
- Lake trout: Lake trout retention prohibited. All lake trout caught must be released immediately.
- Northern pike limits: 5 per day, 5 in possession, only 1 of which may be 30 inches or longer.

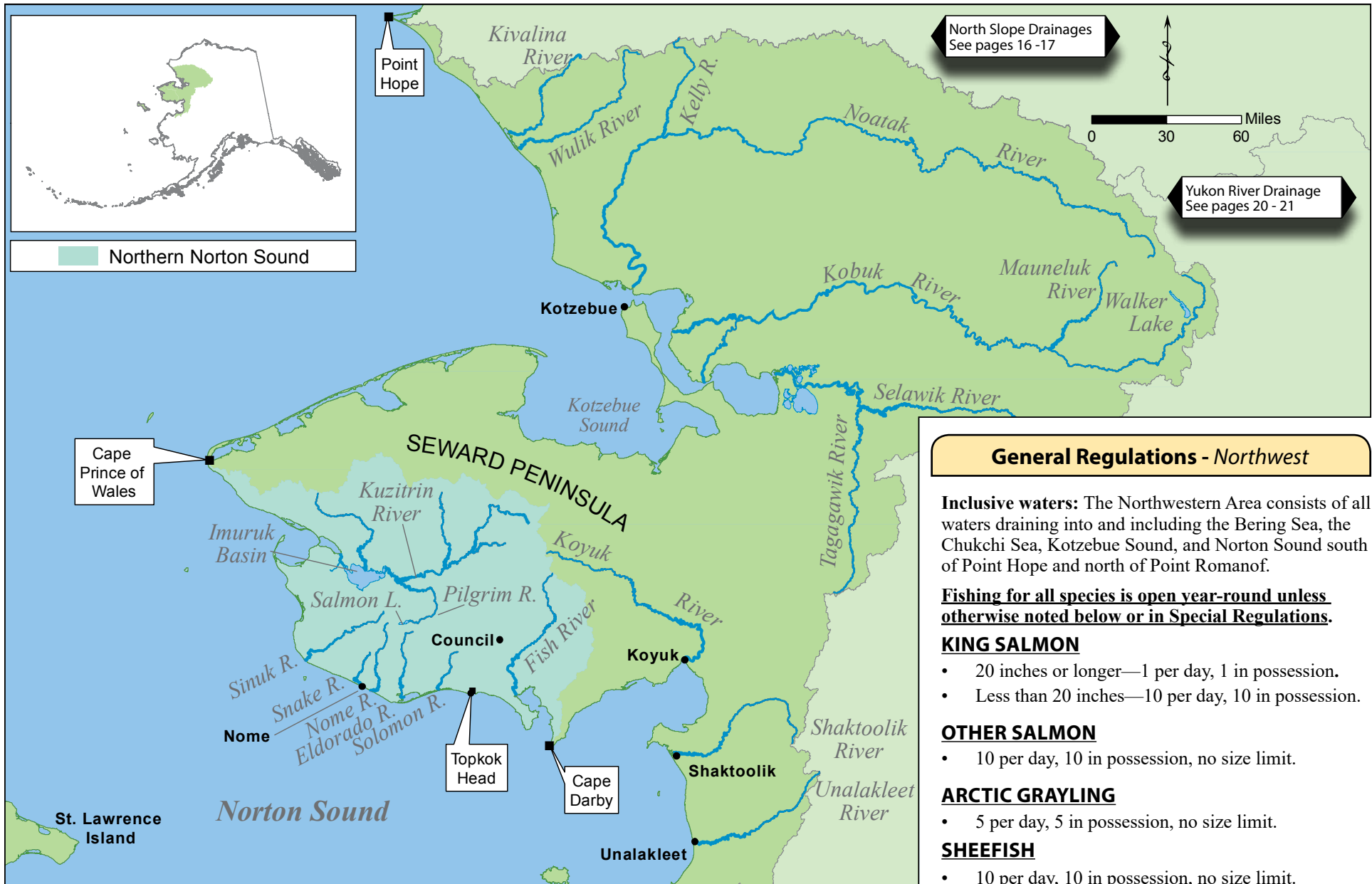


A sheefish from the Kobuk River River.

## Trans-Alaska Pipeline Corridor







## **ARCTIC CHAR, DOLLY VARDEN & LAKE TROUT**

- All lakes:
  - 2 per day, 2 in possession—in combination.
- Flowing and salt waters:
  - 10 per day, 10 in possession—only 2 of which may be 20 inches or longer and only 2 may be lake trout.

## **NORTHERN PIKE**

- 10 per day, 10 in possession, no size limit.

## **BURBOT**

- 15 per day, 15 in possession, no size limit.

## **SHELLFISH**

- See pages 39-40.

## **HALIBUT**

Pacific halibut fisheries are managed by the federal government under international treaty. See page 7 for federal contact information.

- **Season:** February 1 - December 31.
- **Unguided anglers:** 2 per day, 4 in possession.
- **Consult federal regulations for the following:**
  - 1) Bag, size, and possession limits for guided (charter) anglers.
  - 2) Possession and landing requirements.
  - 3) Inseason changes to the regulations.
- **Filleting requirements for fish cleaned at sea:**  
No person shall possess on board a vessel, including charter vessels and pleasure craft used for fishing, Pacific halibut that have been filleted, mutilated, or otherwise disfigured in any manner, except that each Pacific halibut may be cut into no more than 2 ventral pieces, 2 dorsal pieces, and 2 cheek pieces, with a patch of skin on each piece, naturally attached.

## **OTHER FINFISH**

- No limit.

### **Methods and Means - Northwest**

#### **Hook Size:**

- Multiple hooks with a gap between point and shank larger than ½ inch may be used for taking fish other than salmon, except where noted.

## **Use of spears or bow and arrows:**

- Suckers and burbot may be taken with spear or bow and arrow year-round.
- **September 1–April 30:** Northern pike or whitefish (excluding sheefish) may be taken by spear or bow and arrow during any open season for northern pike or whitefish, or may be speared by persons completely submerged during any open season for northern pike or whitefish.

### **Special Regulations - Northwest**

#### **Cripple River:**

- Open to fishing year-round, except for chum salmon.
- **Closed to chum salmon fishing.** All chum salmon caught must be released immediately.

#### **Kobuk River drainage**—upstream of the mouth of the Mauneluk River:

- Open to fishing year-round.
- Sheefish limits: 2 per day, 2 in possession, no size limit.

#### **Nome River:**

- Open to fishing year-round except for Arctic grayling.
- **Closed to Arctic grayling fishing.** All Arctic grayling caught must be released immediately.

#### **Northern Norton Sound**—all waters draining into Norton Sound from Cape Darby to Cape Prince of Wales (see map above):

- Open to fishing year-round.
- Chum salmon limits: 3 per day, 3 in possession.
- Coho salmon limits: 3 per day, 3 in possession.
- Sockeye salmon limits: 3 per day, 3 in possession.
- Pink salmon limits: 10 per day, 10 in possession.
- Arctic grayling limits: 5 per day, 5 in possession, only 1 of which may be 15 inches or longer.

#### **Penny River:**

- **Closed to chum salmon fishing.** All chum salmon caught must be released immediately.

## **Pilgrim River drainage:**

- Open to fishing year-round.
- Arctic grayling limits: 2 per day, 2 in possession, only 1 of which may be 15 inches or longer.

#### **Salmon Lake**—including its tributaries, and the outlet stream (Pilgrim River) 300 ft downstream from the lake outlet:

- Open to fishing year-round, except for salmon.
- **Closed to salmon fishing.** All salmon caught must be released immediately.

#### **Selawik River drainage**—upstream of the mouth of the Tagagawik River:

- Open to fishing year-round.
- Sheefish limits: 2 per day, 2 in possession, no size limit.

## **Snake River drainage:**

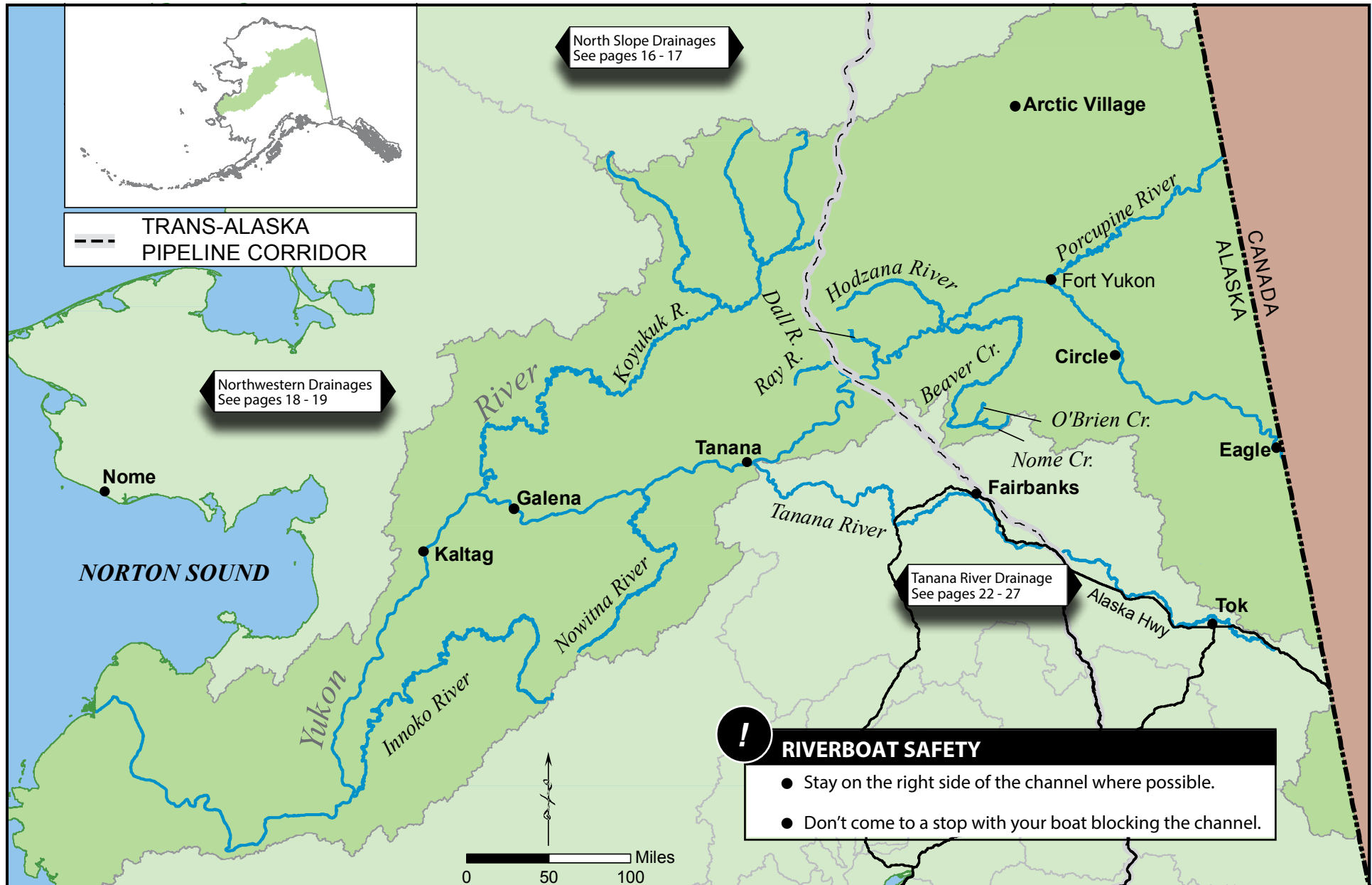
- Open to fishing year-round.
- Arctic grayling limits: 2 per day, 2 in possession, only 1 of which may be 15 inches or longer.

## **Solomon River:**

- Open to fishing year-round, except for Arctic grayling.
- **Closed to Arctic grayling fishing.** All Arctic grayling caught must be released immediately.

## **Unalakleet River drainage:**

- Open to fishing year-round.
- If you remove a salmon from the water, you must retain it. Any salmon removed from the water must be retained and becomes part of the bag limit of the person who originally hooked it. If you intend to release a salmon, you must not remove it from the water before releasing it.
- King salmon limits: 2 per day, 2 in possession, **only 1 of which may be 20 inches or longer.**
  - **There is an annual limit of 2 king salmon 20 inches or longer. Immediately upon landing and retaining a king salmon 20 inches or longer, you must fill out a harvest record; see page 5.**
- Other salmon limits: 10 per day, 10 in possession, of which only 4 in combination may be chum, coho, or sockeye salmon. No size limit.
- Arctic grayling limits: 5 per day, 5 in possession, only 1 of which may be 15 inches or longer.





## General Regulations - Yukon

**Inclusive waters:** The Yukon River Area consists of all waters of the Yukon River drainage, excluding the Tanana River drainage, and all waters draining into, and including, Norton Sound and the Bering Sea south of Point Romanof and north of the westernmost point of Naskonat Peninsula. Includes the headwaters of the White River in Wrangell St. Elias National Park and Preserve.

**Fishing for all species is open year-round unless otherwise noted in Special Regulations.**

### **KING SALMON**

- 20 inches or longer—3 per day, 3 in possession—only 2 of which may be 28 inches or longer.
- Less than 20 inches—10 per day, 10 in possession.

### **OTHER SALMON**

- 10 per day, 10 in possession, no size limit.

### **ARCTIC CHAR, DOLLY VARDEN & LAKE TROUT**

- All lakes:
  - 2 per day, 2 in possession—in combination, no size limit.
- Flowing and salt waters:
  - 10 per day, 10 in possession—only 2 of which may be 20 inches or longer and only 2 may be lake trout.

### **ARCTIC GRAYLING**

- 5 per day, 5 in possession, no size limit.

### **SHEEFISH**

- 10 per day, 10 in possession, no size limit.

### **NORTHERN PIKE**

- 10 per day, 10 in possession, no size limit.

### **BURBOT**

- 15 per day, 15 in possession, no size limit.

### **OTHER FINFISH**

- No limit.

### **SHELLFISH**

- No open season.

## Methods and Means - Yukon

### **Hook Size:**

- Multiple hooks with a gap between point and shank larger than ½ inch may be used for taking fish other than salmon, except where noted.

### **Use of spears or bow and arrows:**

- Suckers and burbot may be taken with spear or bow and arrow year-round.
- **September 1–April 30:** Northern pike or whitefish (excluding sheefish) may be taken by spear or bow and arrow during any open season for northern pike or whitefish, or may be speared by persons completely submerged during any open season for northern pike or whitefish.

## Special Regulations - Yukon

**Dall River area**—all flowing waters and lakes in the Dall River and Little Dall River watersheds:

- Open to fishing year-round except for northern pike.
- Only unbaited, single hook, artificial lures or flies may be used year-round.
- Set lines are prohibited.
- Northern pike limits:
  - **May 20–September 30:** Open to fishing.
  - Fish less than 30 inches: 4 per day, 4 in possession.
  - Fish 48 inches or longer: 1 per day, 1 in possession.
  - **All fish 30 inches or longer and less than 48 inches must be released immediately.**

**Innoko River drainage**—all waters of the Innoko River drainage including Piapiut Slough:

- Open to fishing year-round.
- Northern pike limits: 3 per day, 3 in possession, only one of which may be 30 inches or longer.

**Nome Creek** (of Beaver Creek drainage):

- Open to fishing year-round.
- **April 1–May 31:** Only unbaited, single hook, artificial lures or flies may be used.
- Arctic grayling: Catch-and-release only. All Arctic grayling caught must be released immediately.

### **Nowitna River drainage:**

- Open to fishing year-round.
- Northern pike limits: 5 per day, 5 in possession, only 1 of which may be 30 inches or longer.

**Trans-Alaska Pipeline corridor** (a corridor the length of the Pipeline north of the Yukon River extending 5 miles on either side of the Dalton Highway, excluding the Ray River where General Regulations apply):

- Open to fishing year-round except for salmon.
- **Closed to salmon fishing.** All salmon caught must be released immediately.
- Lake trout: No retention. All lake trout caught must be released immediately.
- Northern pike limits: 5 per day, 5 in possession, only 1 of which may be 30 inches or longer.

**Yukon River drainage**—from the mouth of the Tanana River upstream to and including the Hodzana River:

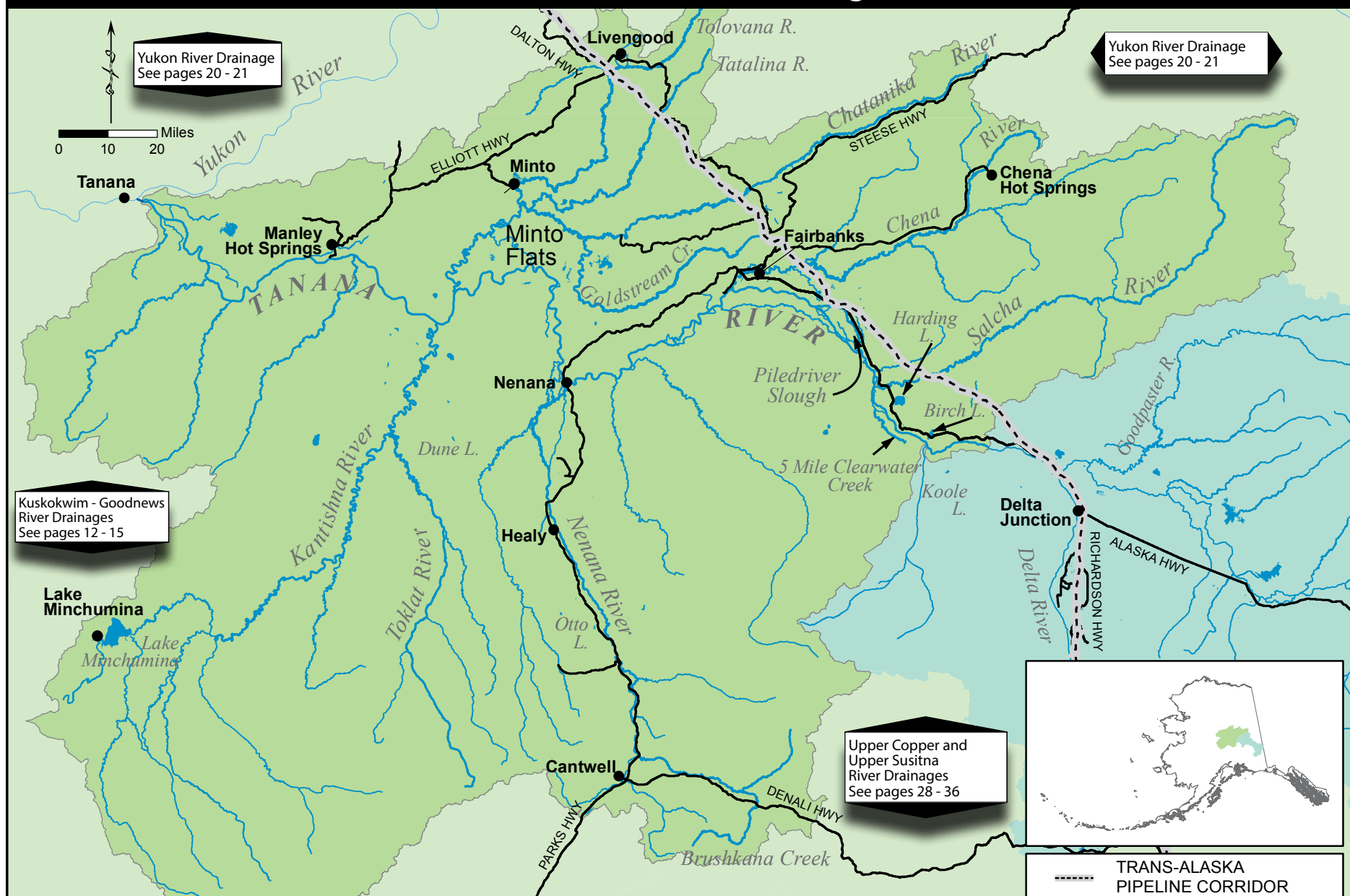
- Open to fishing year-round.
- Northern pike limits: 5 per day, 5 in possession, only 1 of which may be 30 inches or longer.

*Get the latest fishing info  
emailed to you.*

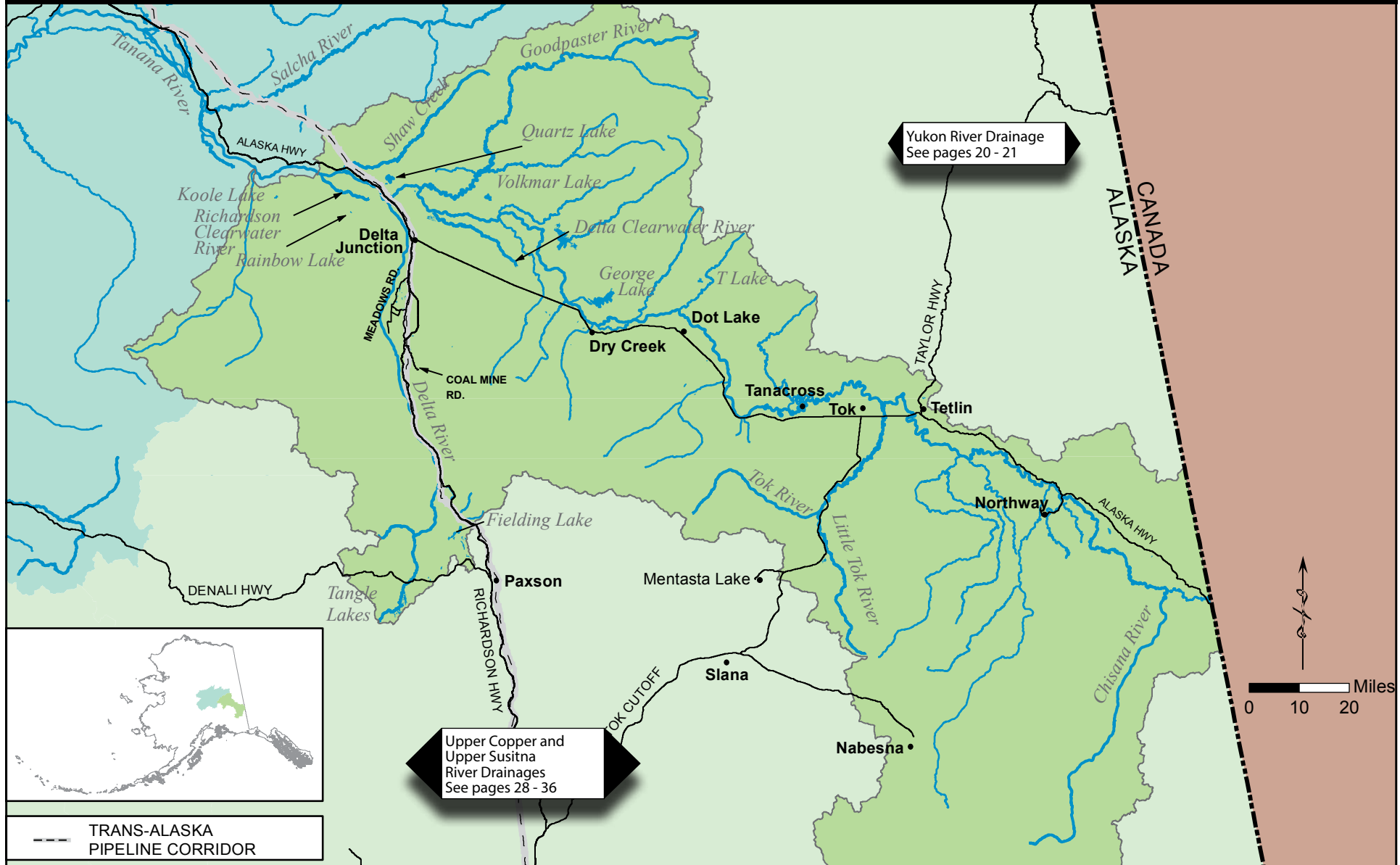
Sign up at: [www.wefishak.alaska.gov](http://www.wefishak.alaska.gov)

Fishing Reports ➤ Advisory Announcements ➤ Emergency Orders

## Lower Tanana River drainage



# Upper Tanana River drainage



### General Regulations - Tanana

**Inclusive waters:** The Tanana River Area consists of all waters of the Tanana River drainage.

**Fishing for all species is open year-round unless otherwise noted below or in Special Regulations.**

#### **KING SALMON**

- 20 inches or longer—1 per day, 1 in possession.
- Less than 20 inches—10 per day, 10 in possession.

#### **CHUM & COHO SALMON**

- 3 per day, 3 in possession—in combination, no size limit.

#### **ARCTIC CHAR & DOLLY VARDEN**

- 10 per day, 10 in possession, no size limit.

#### **LAKE TROUT**

- 2 per day, 2 in possession, no size limit.

#### **ARCTIC GRAYLING**

- 5 per day, 5 in possession, no size limit.

#### **NORTHERN PIKE**

- **Season:** Fishing for northern pike is open year-round in **flowing waters and lakes** of the Tanana River drainage, excluding the Tolovana River drainage and those lakes listed below:
  - See the special regulations for northern pike fishing seasons in Harding Lake, the Tolovana River drainage (including Minto Flats), Goldstream Creek, and the Chatanika River.
  - Northern Pike stocks in the lakes and flowing waters of Minto Flats support both subsistence and sport users. Therefore, sport fish regulations in Minto Flats may be changed in season by emergency order.
- 5 per day, 5 in possession—only 1 of which may be 30 inches or longer.
- When fishing for northern pike through the ice, only 2 closely attended lines may be used, regardless of the bag limit.

#### **WHITEFISH**

- 15 per day, 15 in possession, no size limit.

#### **SHEEFISH**

- 2 per day, 2 in possession, no size limit.

#### **BURBOT**

- All lakes:
  - 5 per day, 5 in possession, no size limit.
- Flowing waters:
  - 15 per day, 15 in possession, no size limit.
- **Burbot Set Line Regulations:** (see page 7 "Sport Fishing Gear for Burbot"):
  - **Tanana River drainage—lakes:**
    - Burbot set lines **may not** be used in Clearwater, Fielding, Grizzly, Jack, Harding, "T", or Tangle lakes (including Landmark Gap and Glacier Gap lakes).
    - In all other lakes in the Tanana River drainage, burbot set lines may only be used **October 15–May 15**.
  - **Tanana River drainage—rivers and streams:**
    - Set lines may be used year-round to catch burbot in all flowing waters of the Tanana River drainage.
    - Hooks are single hooks with gap between point and shank larger than  $\frac{3}{4}$  inch.

#### **OTHER FINFISH**

- No limit.

#### **STOCKED WATERS**

- 10 in combination of stocked species—only 1 of which may be 18 inches or longer; see pages 41-42.

**MILITARY LANDS:** The Northern Alaska Region encompasses four military bases. Civilians are allowed to sport fish on some of these military lands, but a permit from the military is required, and some areas may be closed periodically. Please call for more information BEFORE entering military lands to sport fish:

<b>Clear AFS</b> 907-585-6592 or 907-585-6293	<b>Donnelly Training Area</b> 907-361-9684
<b>Eielson AFB</b> 907-377-5182	<b>Ft. Wainwright</b> 907-361-9684 or <a href="http://usartrak.isportsman.net">http://usartrak.isportsman.net</a>

### Methods and Means - Tanana

#### **Hook Size:**

- Multiple hooks with a gap between point and shank larger than  $\frac{1}{2}$  inch may be used for taking fish other than salmon, except where noted.

#### **Ice Houses:**

- All ice houses not removed from the ice at the end of a day's fishing must be registered and a permit obtained from ADF&G.
- Each registered ice house must have its permit number displayed on its side and roof in distinguishable numbers at least 12 inches in height.
- Ice houses must be removed from all water bodies by April 30.

#### **Use of Spears or Bow and Arrows:**

- Suckers and burbot may be taken with spear or bow and arrow year-round.
- **Northern pike** may be taken by spear or bow and arrow.
  - Only in waters for which there is an open season.
  - **May 1–August 31:** Spear fishing is only allowed if you are completely submerged underwater.
  - **September 1–April 30:** You may be submerged or above the water or ice when spearing or using a bow and arrow.
- **Whitefish (excluding sheefish)** may be taken by spear or bow and arrow under one of the following conditions:
  - **May 1–August 31:** Spear fishing is only allowed if you are completely submerged underwater.
  - **September 1–April 30:** You may be submerged or above the water or ice when spearing or using a bow and arrow.
  - In the Chatanika River drainage, whitefish may only be taken by spear under the authority of a Personal Use permit. Household permits will be issued by an online lottery. Instructions and lottery dates will be announced by August 1. The household limit is 10 whitefish. The specific open fishing dates and regulations are provided on the permit.



## Special Regulations - Tanana

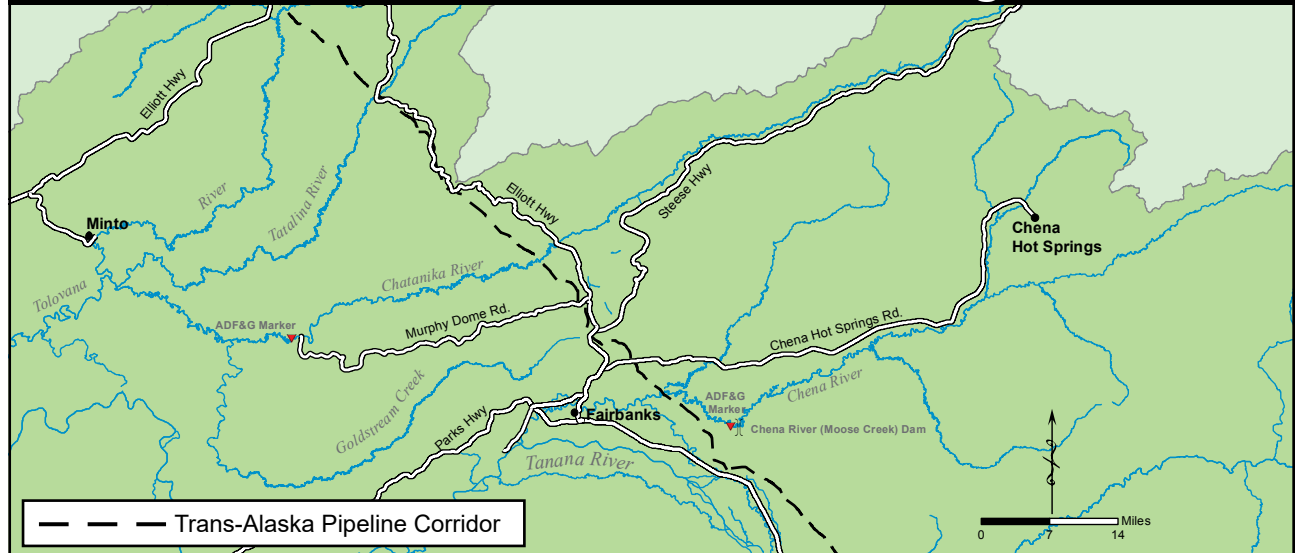
### Chatanika River and its tributaries:

- Open to fishing year-round except for northern pike (see below).
- Only unbaited, artificial lures or flies may be used, except that bait may be used only on hooks with a gap between point and shank larger than  $\frac{3}{4}$  inch.
- Whitefish:
  - Whitefish may not be taken by spear or bow and arrow. Contact Fairbanks ADF&G for information on the Chatanika River personal use whitefish spear fishery. See page 24 for whitefish bag limits.
- Northern pike:
  - **June 1–October 14:** Open to fishing.
- **Upstream of the upstream edge of the Elliott Highway bridge:**
  - **Closed to salmon fishing.** All salmon caught must be released immediately.
- **Upstream from the mouth of Goldstream Creek to the boundary of the Fairbanks Nonsubsistence Use area (identified by an ADF&G marker located approximately 1 mile downstream of the Murphy Dome Road):**
  - Only single hooks may be used.

### Chena River and its tributaries, including Badger or Chena Slough:

- Open to fishing year-round.
- Only 1 unbaited, single hook, artificial lure or fly may be used, except that an artificial lure with a single treble hook with a gap between point and shank larger than  $\frac{1}{2}$  inch may be used when fishing for species other than salmon. Treble hooks may not be used when fishing for salmon.
- Bait may only be used on a single hook with a gap between point and shank larger than  $\frac{3}{4}$  inch.
- Arctic grayling: No retention. All Arctic grayling caught must be released immediately. See exception under Youth-Only Fishery.
- **Upstream from the ADF&G marker located 300 ft downstream of the Chena River dam:**
  - **Closed to salmon fishing.** All salmon caught must be released immediately.

## Chatanika and Chena River drainages



### Chena River Youth-Only Fishery:

- **Downstream from a regulatory marker 300 feet downstream of the Chena River Flood Control Project:**
  - Anglers who are 15 years of age or younger may retain 1 Arctic grayling of any size per day on the dates listed below. Arctic grayling must not be retained outside of the Youth-Only Fishery dates by anglers of any age.
- **Youth-Only Fishery dates in 2021:** June 19-20, June 26-27, July 3-4, July 10-11.

### Delta River and its tributaries:

- Open to fishing year-round except for salmon.
- **Closed to salmon fishing.** All salmon caught must be released immediately.
- **From the mouth of the Delta River to an ADF&G marker 2 miles upstream:**
  - **Closed to sport fishing.**

### Delta Clearwater River—including the Clearwater Lake drainage:

- Open to fishing year-round.
- **January 1–August 31:** Only 1 unbaited, single hook, artificial lure or fly may be used.
- **September 1–December 31:** Only unbaited, artificial lures or flies may be used.
- Set lines may not be used in Clearwater Lake.
- Arctic grayling:
  - Open to fishing.
  - 1 per day, 1 in possession, which must be 12 inches or less.

### Fielding Lake:

- **Closed to burbot and lake trout fishing Sept. 1-30.**
- Only 1 unbaited, single hook, artificial lure or fly may be used.
- Set lines may not be used.
- Burbot limits: 1 per day, 1 in possession, no size limit.
- Lake trout limits: 1 per day, 1 in possession, which must be 26 inches or longer.

**Special Regulations - Tanana****Five Mile Clearwater Creek:**

- Open to fishing year-round.
- **January 1–August 31:** Only one unbaited, single hook, artificial lure or fly may be used.
- **September 1–December 31:** Only unbaited, artificial lures or flies may be used.
- Arctic grayling limits:
  - 2 per day, 2 in possession, only 1 of which may be 12 inches or longer.

**George Lake:**

- Open to fishing year-round.
- Northern pike: Open to fishing year-round.
  - 5 per day, 5 in possession - only 1 of which may be longer than 30 inches.
- **George Lake/George Lake outlet stream:**
  - **October 15–May 15:** Set lines may be used.

**Goodpaster River drainage:**

- **Closed to fishing for salmon other than king salmon.**
- **June 1–August 31:** Only one unbaited, single hook, artificial lure or fly may be used.
- **From the confluence of the Tanana River to an ADF&G marker located approximately 25 miles upstream:**
  - King salmon:
    - **June 1–August 31:** Open to fishing. No retention. All king salmon caught may not be removed from the water and must be released immediately.

**Grizzly Lake (of the Nabesna River drainage):**

- Open to fishing year-round.
- Set lines may not be used.

**Harding Lake:**

- Open to fishing year-round except for northern pike.
- **Closed to fishing for northern pike**, this includes spearing, and bow and arrow fishing. All northern pike must be released immediately.
- Only one single hook or one single hook, artificial lure or fly may be used.
- Set lines may not be used.
- Burbot limits:
  - 2 per day, 2 in possession, no size limit.
- Lake trout limits:
  - 1 per day, 1 in possession, which must be 30 inches or longer.
- Arctic char/Dolly Varden, rainbow trout and landlocked salmon limits:
  - 10 per day, 10 in possession in combination, only one of which may be 18 inches or longer.

**Jack Lake (of the Nabesna River drainage):**

- Open to fishing year-round.
- Set lines may not be used.

**Little Harding Lake:**

- Open to fishing year-round.
- Northern pike:
  - 5 per day, 5 in possession - only 1 of which may be longer than 30 inches.

**Piledriver Slough—upstream from its confluence with Moose Creek:**

- Open to fishing year-round.
- Only one unbaited, single hook, artificial lure or fly may be used.
- Arctic grayling: Arctic grayling retention prohibited. All Arctic grayling must be released immediately.

**Rainbow Lake (west of Delta Junction):**

- Open to fishing year-round.
- Rainbow trout limits:
  - 5 per day, 5 in possession, only one of which may be 18 inches or longer.

**Richardson Clearwater River drainage:**

- Only unbaited, artificial lures or flies may be used.

**Salcha River and its tributaries:**

- Open to fishing year-round.
- **Fishing from the Richardson Highway bridge over the Salcha River is prohibited.**
- Only unbaited, artificial lures or flies may be used, except that bait may be used only on hooks with a gap between point and shank larger than ¾ inch.
- **Upstream from the ADF&G marker located about 2½ miles upstream of the Richardson Hwy bridge:**
  - **Closed to salmon fishing.** All salmon must be released immediately.

**Shaw Creek and its tributaries:**

- Open to fishing year-round.
- Only 1 unbaited, single hook, artificial lure or fly may be used.
- Arctic grayling:
  - **April 1–May 31:** No retention. All Arctic grayling must be released immediately.
- **Downstream of the Richardson Hwy bridge:**
  - Bait may be used only on single hooks with a gap between point and shank larger than ¾ inch.

**Stocked Lakes (listed on pages 41-42):**

- Open to fishing year-round.
- Bait and artificial lures are permitted, including treble hooks.
- Rainbow trout, Arctic char/Dolly Varden, Arctic grayling, landlocked salmon limits:
  - 10 per day, 10 in possession, in combination of stocked species, only 1 of which may be 18 inches or longer.
- Lake trout limits:
  - 2 per day, 2 in possession, no size limit.

### **"T" Lake:**

- Open to fishing year-round.
- Set lines may not be used.
- Burbot limits: 2 per day, 2 in possession, no size limit.

### **Tanana River** (2 miles below and above Shaw Creek):

- Open to fishing year-round.
- Bait may be used only on single hooks with a gap between point and shank larger than  $\frac{3}{4}$  inch.
- Arctic grayling:
  - **April 1–May 31:** No retention. All Arctic grayling must be released immediately.

### **Tangle Lakes system** (all waters of the Delta River drainage upstream of Wildhorse Creek - this includes Landmark Gap and Glacier Lakes):

- Open to fishing year-round.
- Set lines may not be used.
- Lake trout limits: 1 per day, 1 in possession, no size limit.
- Burbot limits: 2 per day, 2 in possession, no size limit.

### **Toklat River drainage:**

- Open to fishing year-round (see exception below).
- August 15–May 15: the Toklat River drainage is closed approximately one mile upstream and two miles downstream of the Kobi-McGrath trail crossing, enclosed by the following four points: 64° 08.21' N. lat., 150° 01.16' long., to 64° 08.21' N. lat., 149° 58.38' W. long., to 64° 10.66' N. lat., 150° 02.09' W. long., to 64° 10.66' N. lat., 149° 59.72' W. long.

### **Tok River** (and its tributaries):

- Only 1 unbaited, single hook, artificial lure may be used year-round.
- **Closed to salmon fishing.** All salmon caught must be released immediately.
- Arctic char/Dolly Varden: Arctic char/Dolly Varden retention prohibited. All Arctic char/Dolly Varden caught must be released immediately.
- Arctic grayling limits:
  - **May 15–October 31:** Open to fishing.
    - 2 per day, 2 in possession, no size limit.

### **Tolovana River drainage** (including Minto Flats, Minto Lakes, Tatalina River, and Goldstream Creek):

- Open to fishing year-round except for northern pike.
- Northern pike:
  - **June 1–October 14:** Open to fishing.

### **Volkmar Lake:**

- Open to fishing year-round.
- Northern pike limits: 2 per day, 2 in possession, only 1 of which may be 30 inches or longer.

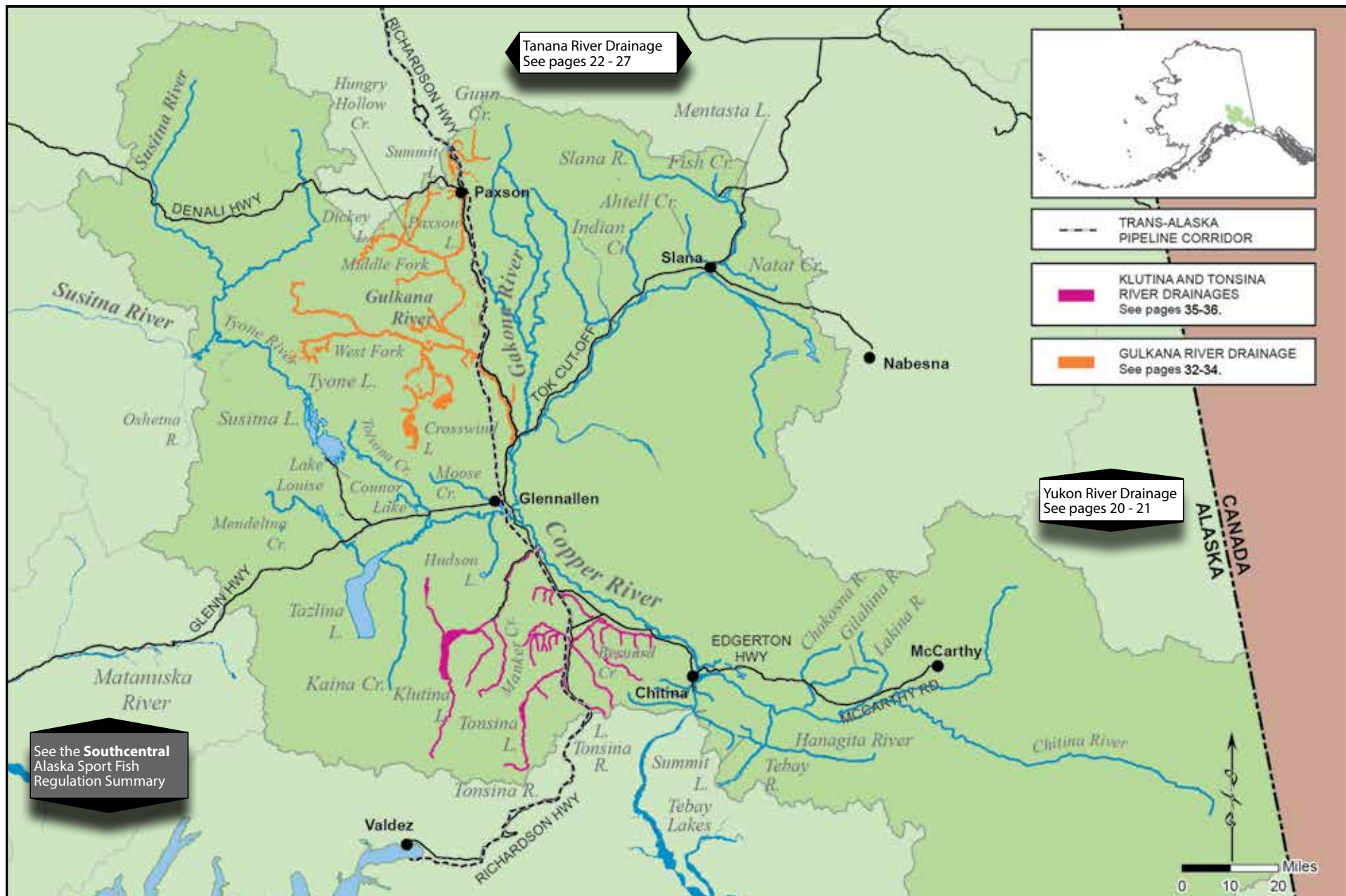
## The Tangle Lakes area



***Get the latest fishing info emailed to you.***

**Sign up at: [www.wefishak.alaska.gov](http://www.wefishak.alaska.gov)**







## General Regulations - Upper Copper and Upper Susitna

**Inclusive waters:** All waters and tributaries of the Copper River upstream from a line between the south bank of Haley Creek and the south bank of Canyon Creek in Wood Canyon, and all waters and tributaries of the upper Susitna River drainage upstream from the confluence of the Oshetna River, but *excluding* the Oshetna River.

**Fishing for all species is open year-round unless otherwise noted below or in Special Regulations.**

### KING SALMON

- **Season:** January 1–July 19.
- **20 inches or longer, annual limit of 4 fish—1 per day, 1 in possession. Immediately upon landing and retaining a king salmon 20 inches or longer, you must fill out a harvest record; see page 5.**
- Less than 20 inches—10 per day, 10 in possession.
- If you remove a king salmon from the water, you must retain it. Any king salmon removed from the water must be retained and becomes a part of the bag limit of the person that originally hooked the fish. **You must not remove a king salmon from the water if you intend to release it.**
- Anyone who is engaged in freshwater sport fish guiding is allowed to sport fish in the Copper River or its tributaries while a client is present or within the guide's control or responsibility, *but that guide may not retain a king salmon while guiding.*

### OTHER SALMON

- 16 inches or longer—3 per day, 3 in possession.
- Less than 16 inches—10 per day, 10 in possession.
- If you remove a salmon from the water, you must retain it. Any salmon removed from the water must be retained and becomes a part of the bag limit of the person that originally hooked the fish. **You must not remove a salmon from the water if you intend to release it.**

### ARCTIC CHAR & DOLLY VARDEN

- 10 per day, 10 in possession, no size limit.

### LAKE TROUT

- 2 per day, 2 in possession, no size limit.

### RAINBOW/STEELHEAD TROUT

- 2 per day, 2 in possession—only one of which may be 20 inches or longer.

### ARCTIC GRAYLING

- 5 per day, 5 in possession, no size limit.

### BURBOT

- 5 per day, 5 in possession, no size limit.
- Set lines are prohibited in lakes and flowing waters of the Upper Copper/Upper Susitna river drainages, except those waters of the Copper River drainage as described on page 30.

### OTHER FINFISH *(including northern pike)*

- No limit.

### STOCKED WATERS

- 10 in combination of stocked species—only 1 of which may be 18 inches or longer; see pages 41-42.

## Methods and Means - Upper Copper and Upper Susitna

### **Bait and gear restrictions:**

- Only unbaited, single hook, artificial lures or flies may be used in flowing waters of the Upper Copper River drainage, except as specified by special regulations in the Klutina, Gulkana, Tazlina, Tonsina, and mainstem Copper River drainages.
- In the Upper Susitna River drainage, bait and treble hooks are allowed except as specified by special regulations in the Tyone River drainage.

### **Ice houses:**

- All ice houses not removed from the ice at the end of a day's fishing must be registered and a permit obtained from ADF&G.
- Each registered ice house must have its permit number displayed on one side and on its roof in distinguishable numbers at least 12 inches high.
- Ice houses must be removed from all water bodies by April 30.

### **Use of spears or bow and arrows for whitefish and suckers:**

- **October 1–March 31:** Whitefish: Unless otherwise provided, whitefish may be taken with spears or bow and arrow.
- Suckers: Unless otherwise provided, suckers may be taken with spears or bow and arrow year-round. Arrows must have a barbed tip and be attached by a line to the bow ('bow' means a long bow, recurve bow, compound bow, or crossbow).

### Special Regulations - Upper Copper and Upper Susitna

#### **Chitina River drainage:**

- Open to fishing year-round for species other than king salmon.
- King salmon:
  - **July 1–August 10:** Open to fishing.

#### **Chokosna River** (*Chitina River drainage*):

- Open to fishing year-round for species other than king salmon.
- **Closed to king salmon fishing.** All king salmon caught must be released immediately.

#### **Copper River drainage:**

- Open to fishing year-round for species other than king salmon.
- **Downstream of the upstream bank of the Klutina River** (see specific regulations for Klutina and Tonsina rivers on page 35):
  - King salmon:
    - **July 1–August 10:** Open to fishing.
- **Mainstem only**—downstream of the confluence of the Slana River:
  - Bait and artificial lures or flies permitted, including treble hooks.
- **Mainstem and flowing waters of east bank Copper River tributaries, and in flowing waters of west bank Copper River tributaries downstream of the Richardson Highway and Glenn Highway (Tok Cutoff), excluding the Gulkana River** (see pages 32-34):
  - Burbot may be taken with more than one line and hook, as specified on page 7 under “Sport fishing gear for burbot.”

#### **Fish Creek** (*tributary to Mentasta Lake*)

- **Closed to salmon fishing.** All salmon caught must be released immediately.

**Gakona River**—clearwater tributaries, including all flowing waters within ¼-mile radius of their confluence with the Gakona River:

- Open to fishing year-round for species other than king salmon.
- **Closed to king salmon fishing.** All king salmon caught must be released immediately.

**Gilahina River** (*Chitina River drainage*)—including all flowing waters within ¼-mile radius of its confluence with the Chitina River:

- Open to fishing year-round for species other than king salmon.
- **Closed to king salmon fishing.** All king salmon caught must be released immediately.

**Gulkana River** (see pages 32-34):

#### **Hanagita River drainage:**

- Open to fishing year-round.
- Rainbow/steelhead trout: Rainbow trout retention prohibited. All rainbow/steelhead trout caught must be released immediately.

#### **Hudson Lake:**

- Open to fishing year-round.
- Burbot limits: 2 per day, 2 in possession, no size limit.

**Indian Creek** (*Copper River drainage*)—including all flowing waters within ¼-mile radius of the confluence with the Copper River:

- Open to fishing year-round for species other than king salmon.
- **Closed to king salmon fishing.** All king salmon caught must be released immediately.

**Klutina River drainage** (see page 36):

**Lake Louise** (*Tyone River drainage*):

- Open to fishing year-round.
- **April 16–October 31:** Only unbaited, single hook, artificial lures or flies may be used.
- **November 1–April 15:** Single hooks only; bait may be used.
- Burbot limits: 1 per day, 1 in possession, no size limit.
- Lake trout limits: 1 per day, 1 in possession, no size limit.

**Lakina River** (*Chitina River drainage*)—including all flowing waters within ¼-mile radius of its confluence with the Chitina River:

- Open to fishing year-round for species other than king salmon.
- **Closed to king salmon fishing.** All king salmon caught must be released immediately.

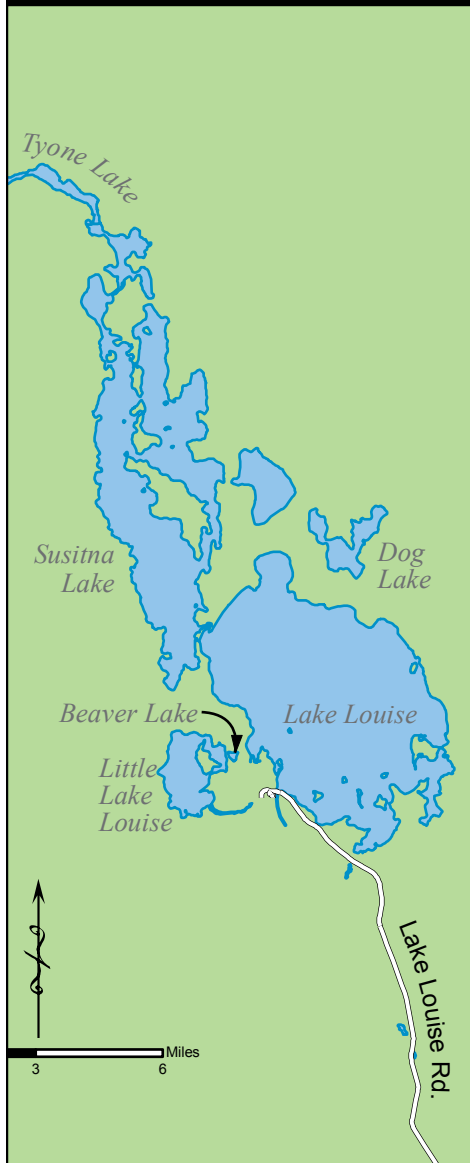
#### **Mendeltna Creek drainage:**

- Open to fishing year-round for species other than salmon and Arctic grayling.
- **All flowing waters, including all waters within ¼ mile of the Mendeltna Creek confluence with Tazlina Lake:**
  - **Closed to salmon fishing.** All salmon caught must be released immediately.
  - Arctic grayling limits:
    - **June 1–March 31:** Open to fishing.
    - 2 per day, 2 in possession, 12 inch minimum. All Arctic grayling 12 inches or less must be released immediately.
- **All lakes:**
  - Open to fishing year-round except for salmon.
  - **Closed to salmon fishing.** All salmon caught must be released immediately.

**Moose Creek** (*Tazlina River drainage*):

- Bait and artificial lures or flies are permitted year-round, including treble hooks (see Methods and Means on pages 6-7).

## Tyone River drainage



**Moose Lake** (*Tazlina River drainage*)—including *Our Creek* (a tributary to Moose Lake):

- Open to fishing year-round except for Arctic grayling.
- Burbot limits: 2 per day, 2 in possession, no size limit.
- Arctic grayling limits:
  - **June 1–March 31:** Open to fishing.
    - 2 per day, 2 in possession, no size limit.

**Sinona Creek**—including all flowing waters within ¼-mile radius of its confluence with the Copper River:

- **Closed to king salmon fishing.** All king salmon caught must be released immediately.

**Slana River drainage**—including all flowing waters within ¼-mile radius of the confluence of the Slana and Copper rivers (including Ahtell and Natat creeks):

- Open to fishing year-round for species other than king salmon.
- **Closed to king salmon fishing.** All king salmon caught must be released immediately.
- Whitefish: whitefish may be taken by spear or bow and arrow year-round.

**Stocked lakes** (listed in tables on pages 41-42):

- Open to fishing year-round.
- Bait and artificial lures or flies are permitted, including treble hooks.
- Rainbow/steelhead trout, Arctic char/Dolly Varden, Arctic grayling, landlocked salmon limits:
  - 10 per day, 10 in possession (in combination), only one of which may be 18 inches or longer.

**Summit Lake and Bridge Creek** (outlet stream of Summit Lake)—*Tebay River drainage*:

- Open to fishing year-round.
- Rainbow/steelhead trout limits: 10 per day, 10 in possession, only one of which may be 18 inches or longer.

**Susitna Lake** (*Tyone River drainage*):

- Open to fishing year-round.
- **April 16–October 31:** Only unbaited, single hook, artificial lures or flies may be used.
- **November 1–April 15:** Single hooks only; bait may be used.
- Burbot limits: 2 per day, 2 in possession, no size limit.
- Lake trout limits: 1 per day, 1 in possession, no size limit.

- **Susitna River drainage**—upstream from the Oshetna River:
  - **Closed to salmon fishing.** All salmon caught must be released immediately.

**Upper Tazlina River drainage**—all flowing waters entering Tazlina Lake—except a ¼-mile radius around the mouth of Kaina Creek:

- Open to fishing year-round for species other than king salmon.
- **Closed to king salmon fishing.** All king salmon caught must be released immediately.

**Tebay River drainage**—downstream from its confluence with the Hanagita River:

- Open to fishing year-round for species other than king salmon.
- King salmon:
  - **July 1–August 10:** Open to fishing.
- Rainbow/steelhead trout: No retention. All rainbow/steelhead trout caught must be released immediately.

**Tolsona Lake:**

- Open to fishing year-round.
- Burbot limits: 2 per day, 2 in possession, no size limit.

**Tonsina River drainage** (see page 35).

**Tyone Lake:**

- Open to fishing year-round.
- **April 16–October 31:** Only unbaited, single hook, artificial lures or flies may be used.
- **Nov. 1–April 15:** Single hooks only; bait may be used.
- Burbot limits: 2 per day, 2 in possession, no size limit.
- Lake trout limits: 1 per day, 1 in possession, no size limit.

**Tyone River drainage** (see map at left):

- Open to fishing year-round.
- **All flowing waters:**
  - Burbot limits: 2 per day, 2 in possession, no size limit.
- **All lakes (except Louise, Susitna and Tyone lakes):**
  - Burbot limits: 2 per day, 2 in possession, no size limit.

## Special Regulations - Gulkana River Drainage

**Gulkana River drainage:**

The following regulations apply to **all waters** of the Gulkana River drainage, unless specified otherwise below.

- **Entire year (in flowing waters):** Only unbaited, single hook, artificial lures or flies may be used.
- Rainbow/steelhead trout: No retention. All rainbow/steelhead trout caught must be released immediately.
- Arctic grayling limits: 5 per day, 5 in possession, only 1 of which may be 14 inches or longer.
- See special regulations for waters upstream of the confluence of the Gulkana and Middle Fork Gulkana (including: Paxson Lake; waters of Paxson Lake within a 100 yard radius of the mouth of the East Fork; and waters of the East Fork Gulkana River, Summit Lake, and the Gunn and Fish Creek Drainages).

Refer to map on the next page for colored sections and corresponding numbers. If you have any questions about the Gulkana River drainage, please contact the Glennallen ADF&G office at 907-822-3309.

**Gulkana River drainage—Upstream of Paxson Lake, including East Fork Gulkana, Summit Lake, and Gunn and Fish Creek Drainages:**
**All waters:**

- Closed to all salmon fishing. Salmon may not be targeted. Any salmon caught incidentally must remain in the water and must be released immediately.
- Arctic grayling limits: 2 per day, 2 in possession, only 1 of which may be 14 inches or longer.
- Lake trout limits: 1 per day, 1 in possession.

**Summit Lake:**

- **April 16–October 31:** Only unbaited, single hook, artificial lures or flies may be used.
- **November 1–April 15:** Single hooks only; bait may be used.

**Summit Lake and Gunn Creek drainage:**

- Burbot limits: 2 per day, 2 in possession, no size limit.

**Paxson Lake****All waters:**

- Closed to all salmon fishing. Salmon may not be targeted. Any salmon caught incidentally must remain in the water and must be released immediately.
- **April 16–October 31:** Only unbaited, single hook, artificial lures or flies may be used.
- **November 1–April 15:** Single hooks only; bait may be used.
- Lake trout limits: 1 per day, 1 in possession.

**Waters within a 100 yard radius of the mouth of the East Fork:**

- Arctic grayling: 2 per day, 2 in possession, only 1 of which may be 14 inches or longer.

**Gulkana River—All flowing waters from 100 yards upstream from the narrows at the outlet of Paxson Lake, downstream to the confluence of the Middle Fork:**
**All waters:**

- Closed to salmon fishing. Salmon may not be targeted. Any salmon caught incidentally must remain in the water and must be released immediately.

**Middle Fork—Waters of the Middle Fork of the Gulkana River:****All waters:**

- Closed to king salmon fishing. King salmon may not be targeted. Any king salmon caught incidentally must remain in the water and must be released immediately.

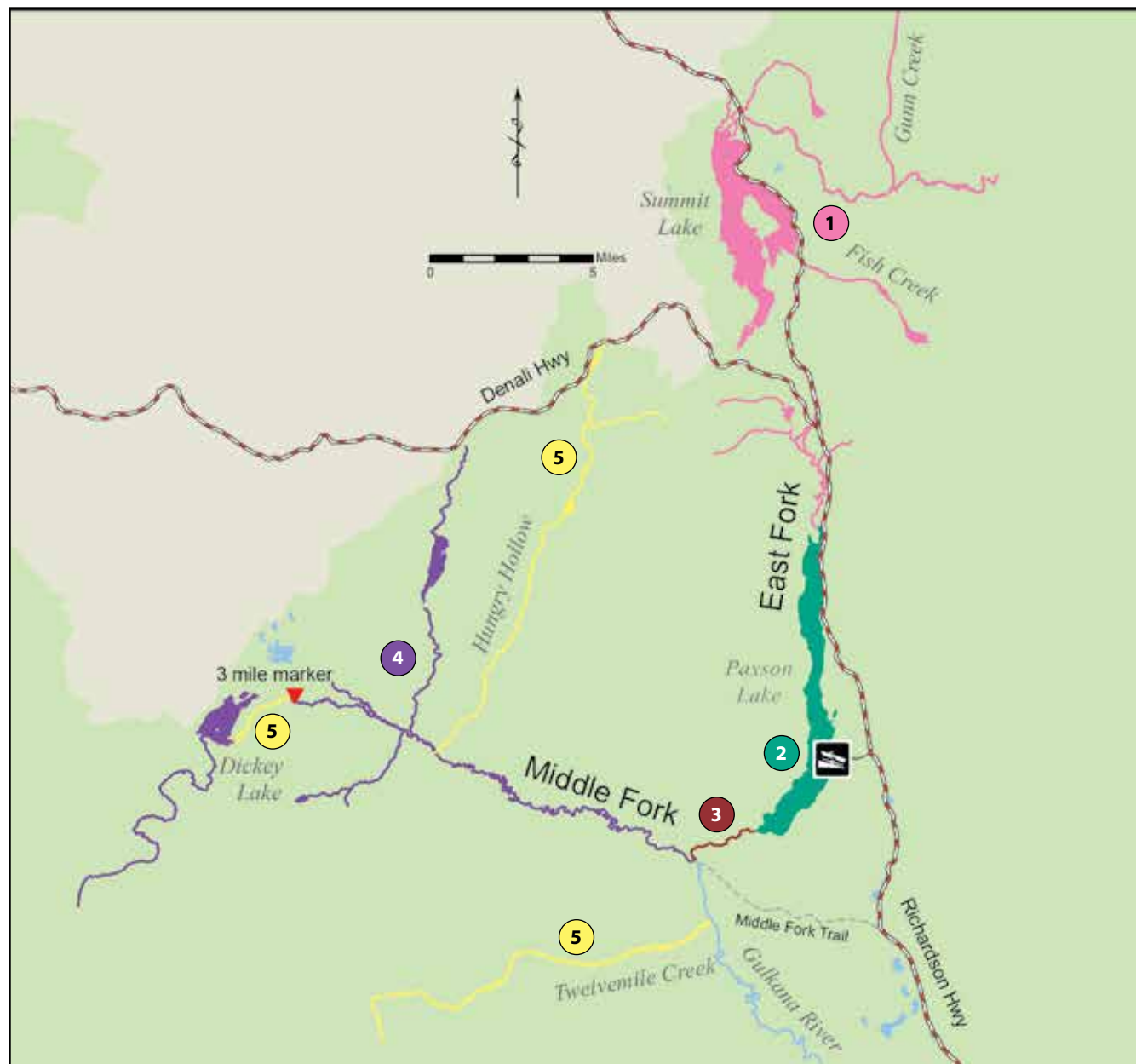
**Middle Fork, Hungry Hollow Creek and Twelve Mile Creek—All waters of Twelvemile Creek, Hungry Hollow (including Tenmile Lake) and the Middle Fork of the Gulkana River from the outlet of Dickey Lake to an ADF&G marker three miles downstream:**
**All waters:**

- Closed to salmon fishing. Salmon may not be targeted. Any salmon caught incidentally must remain in the water and must be released immediately.
- **Closed to all sport fishing April 15–June 14.**

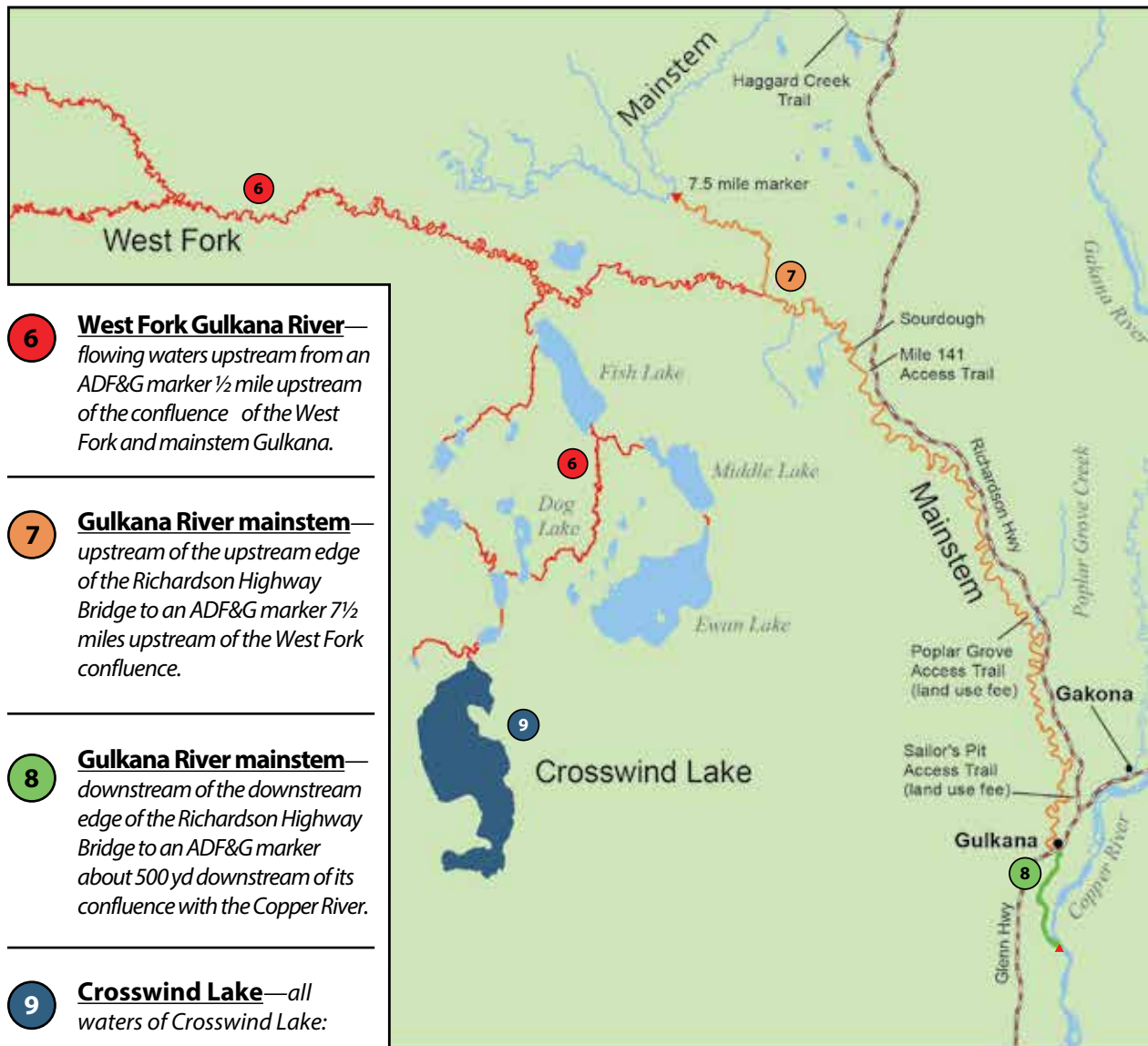


# Upper Gulkana

- 1 Gulkana River drainage**—Upstream of Paxson Lake, including East Fork Gulkana, Summit Lake, and Gunn and Fish Creek Drainages.
- 2 Paxson Lake**—All waters of Paxson Lake.
- 3 Gulkana River**—All flowing waters from 100 yards upstream from the narrows at the outlet of Paxson Lake, downstream to the confluence of the Middle Fork:
- 4 Middle Fork**—Waters of the Middle Fork of the Gulkana River.
- 5 Middle Fork, Hungry Hollow Creek and Twelve Mile Creek**—All waters of Twelvemile Creek, Hungry Hollow (including Tenmile Lake) and the Middle Fork of the Gulkana River from the outlet of Dickey Lake to an ADF&G marker three miles downstream:



## Lower Gulkana River



**6 West Fork Gulkana River**—flowing waters upstream from an ADF&G marker ½ mile upstream of the confluence of the West Fork and mainstem Gulkana.

**7 Gulkana River mainstem**—upstream of the upstream edge of the Richardson Highway Bridge to an ADF&G marker 7½ miles upstream of the West Fork confluence.

**8 Gulkana River mainstem**—downstream of the downstream edge of the Richardson Highway Bridge to an ADF&G marker about 500 yd downstream of its confluence with the Copper River.

**9 Crosswind Lake**—all waters of Crosswind Lake:

**West Fork Gulkana River**—flowing waters upstream from an ADF&G marker ½ mile upstream of the confluence of the West Fork and mainstem Gulkana:

- Sockeye salmon limits:
- **January 1–July 31:** 3 per day, 3 in possession.
- **August 1–December 31:** 6 per day, 6 in possession.

**Gulkana River mainstem**—upstream of the upstream edge of the Richardson Highway Bridge to an ADF&G marker 7½ miles upstream of the West Fork confluence:

- **June 1–July 19:** Bait and artificial lures or flies are permitted, including treble hooks.
- **July 20–May 31:** Only unbaited, single hook, artificial lures or flies may be used.

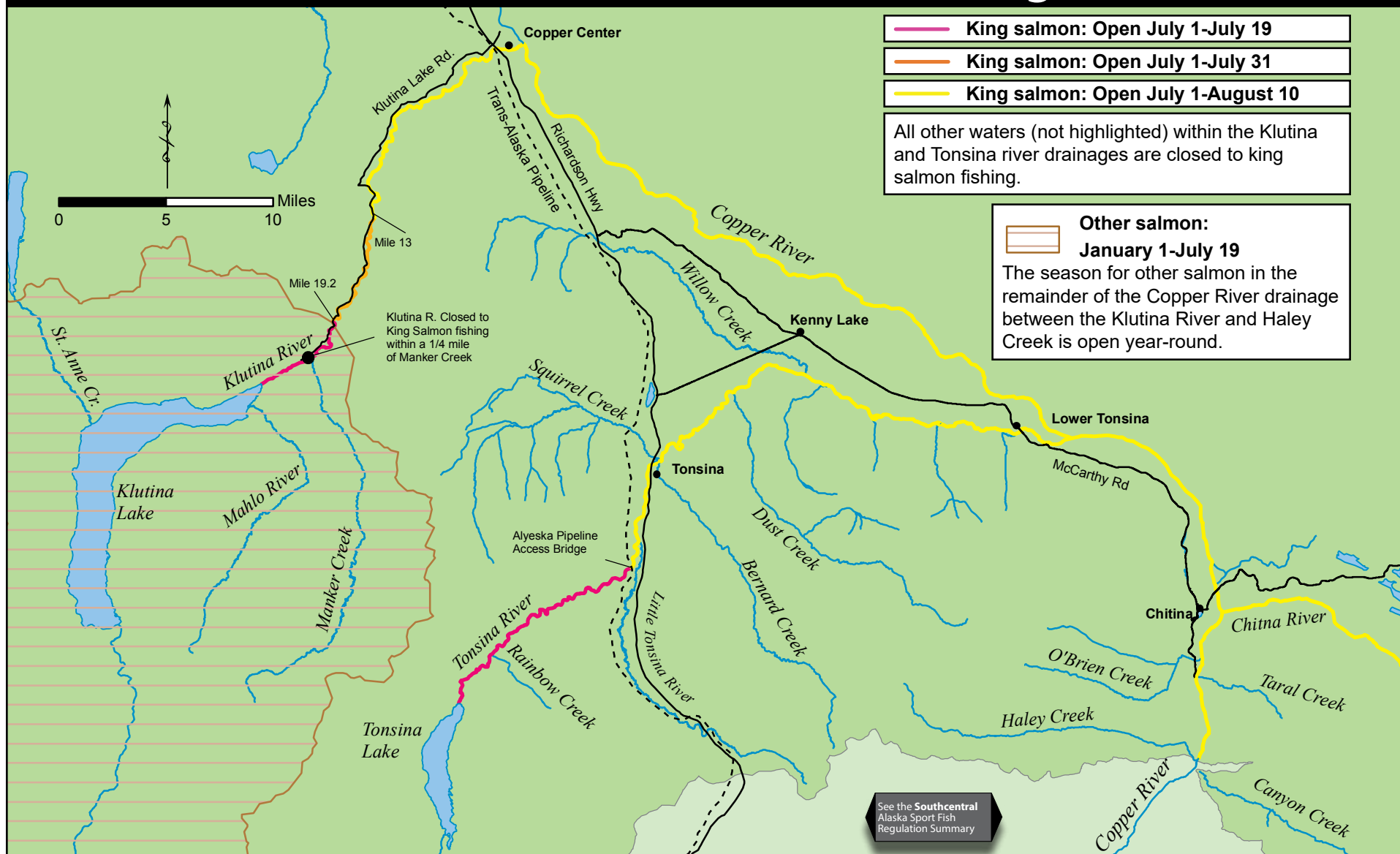
**Gulkana River mainstem**—downstream of the downstream edge of the Richardson Highway Bridge to an ADF&G marker about 500 yd downstream of its confluence with the Copper River:

- **June 1–July 31:** Only unbaited, single hook, artificial flies allowed, with gap between point and shank ¾ inch or less. Additional weight may only be used 18 inches or more ahead of fly.
- A bead fished on the line above a bare hook or a single bare hook is not an artificial fly.
- **August 1–May 31:** Only unbaited, single hook, artificial lures may be used.

**Crosswind Lake**—all waters of Crosswind Lake:

- **April 16–October 31:** Only unbaited, single hook, artificial lures or flies may be used.
- **November 1–April 15:** Single hooks only; bait may be used.
- Lake trout: 1 per day, 1 in possession, no size limit.

# Klutina and Tonsina River drainages



**Klutina River drainage:**

- **Entire year:** Bait and artificial lures or flies are permitted, including treble hooks (see Methods and Means on page 6).
- **All flowing waters upstream of ADF&G marker at Mile 19.2 Klutina Lake Road, to Klutina Lake:**
  - King salmon:
    - **July 1–July 19:** Open to fishing.
  - Other salmon:
    - **January 1–July 19:** Open to fishing.
- **All flowing waters downstream of the ADF&G marker at Mile 19.2 Klutina Lake Road, to the ADF&G marker at Mile 13.0 Klutina Lake Road:**
  - King salmon:
    - **July 1–July 31:** Open to fishing.
- **All flowing waters downstream of ADF&G marker at Mile 13.0 Klutina Lake Road:**
  - King salmon:
    - **July 1–August 10:** Open to fishing.
- **Klutina Lake—including all flowing waters entering Klutina Lake:**
  - Open to fishing year-round for species other than king salmon.
  - **Closed to king salmon fishing.** All king salmon caught must be released immediately.
  - Salmon (other than king salmon):
    - **January 1–July 19:** Open to fishing.
- **Manker Creek—including all flowing waters within ¼-mile radius of its confluence with the Klutina River:**
  - Open to fishing year-round for species other than king salmon.
  - **Closed to king salmon fishing.** All king salmon caught must be released immediately.
  - Salmon (other than king salmon):
    - **January 1–July 19:** Open to fishing.
- **All other lakes in the Klutina River drainage:**
  - Open to fishing year-round for species other than king salmon.
  - Salmon (other than king salmon):
    - **January 1–July 19:** Open to fishing.



Fresh salmon fillets cooked over an open fire. Can it get any better?

**Tonsina River drainage:**

- Open to fishing year-round for species other than king salmon.
- In the flowing waters of the Tonsina River drainage upstream of Tonsina Lake, only unbaited, single hook, artificial lures or flies may be used year-round.
- In all flowing waters of the Tonsina River drainage downstream from the outlet of Tonsina Lake, bait and artificial lures or flies are permitted, including treble hooks year-round.
- **All flowing waters downstream of Tonsina Lake to the downstream edge of the Alyeska Pipeline access bridge:**
  - King salmon:
    - **July 1–July 19:** Open to fishing.
- **All flowing waters downstream of the downstream edge of the Alyeska Pipeline access bridge:**
  - King salmon:
    - **July 1–August 10:** Open to fishing.
- **All tributaries of the Tonsina River, including the Little Tonsina River and Bernard Creek, and all flowing waters within a ¼-mile radius of their confluence with the Tonsina River:**
  - Open to fishing year-round for species other than king salmon.
  - **Closed to king salmon fishing.** All king salmon caught must be released immediately.
- **Tonsina Lake—including all flowing waters entering Tonsina Lake:**
  - Open to fishing year-round for species other than king salmon.
  - **Closed to king salmon fishing.** All king salmon caught must be released immediately.



# CHITINA PERSONAL USE DIP NET FISHERY

**Only Alaska residents, as defined on page 4, are eligible to participate in personal use fisheries.**

**Nonresidents may not participate in personal use fisheries.** For example, nonresidents may not handle or clean fish harvested in a PU fishery and nonresidents may not handle any of the gear that is being used for personal use fishing, or have in their possession fish harvested in a personal use fishery.

- **“Personal use” is taking, fishing for, or possession of finfish, shellfish, or other fishery resources, by Alaska residents for personal use and not for sale or barter, with gill or dip net, seine, fish wheel, long line, or other means defined by the Board of Fisheries.**
- **In all personal use fisheries, a sport fishing license is required (unless the angler is under 18):**
  - For resident anglers aged 18 to 59, a resident Alaska sport fishing license must be in possession of the person who is personal use fishing.
  - For Alaska resident anglers 60 or older and for Alaska resident disabled veterans, the ADF&G PID card or DAV card must be in possession of the person who is personal use fishing.
- **A \$15 permit is required in addition to a sport fishing license. Personal use permits are available online at: [www.adfg.alaska.gov/store](http://www.adfg.alaska.gov/store)**
- **Salmon sport fishing bag and possession limits are in addition to those allowed under personal use fishing regulations.**

**Permits are available online at:**  
**[www.adfg.alaska.gov/store](http://www.adfg.alaska.gov/store)**



**A person may not possess salmon taken under a personal use salmon fishing permit unless both tips of the tail fin have been immediately removed from the salmon.**

- Both tips of the tail fin must be clipped immediately upon harvesting the fish.
- All fish harvested must be recorded on the permit, in ink, immediately upon harvesting the fish.
- **When fishing from shore:** *Immediately* means before concealing the salmon from plain view or before transporting the salmon from the shoreline or streambank adjacent to the waters open to personal use fishing where the salmon was removed from the water.
- **When fishing from a boat:** *Immediately* means before concealing the salmon from plain view or before transporting the salmon from the waters open to personal use fishing where the salmon was removed from the water.
- This definition of immediately applies only to the personal use fishery and **DOES NOT** apply to recording king salmon (or other fish) taken in the sport fishery on the sport fishing license or harvest record.

## **Dip net: Statewide Definition for all Personal Use Fisheries**

By regulation, a dip net is defined as a bag-shaped net supported on all sides by a rigid frame. The maximum straight-line distance between any two points on the net frame, as measured through the net opening, may not exceed 5 feet. The depth of the bag must be at least one-half the greatest straight-line distance as measured through the net opening. No portion of the bag may be constructed of webbing that exceeds a stretched measurement of 4½ inches. The frame must be attached to a single rigid handle and be operated by hand.

## A household may not obtain both a Glennallen Subdistrict subsistence salmon permit and a Chitina Subdistrict personal use salmon permit in the same year.

**Notice of fishery openings and general information are available 24 hours a day by calling:**

**Glennallen** at (907) 822-5224

**Fairbanks** at (907) 459-7382

**Anchorage** at (907) 267-2511



Be sure to call the recorded message **before** leaving for Chitina. The numbers are listed above.

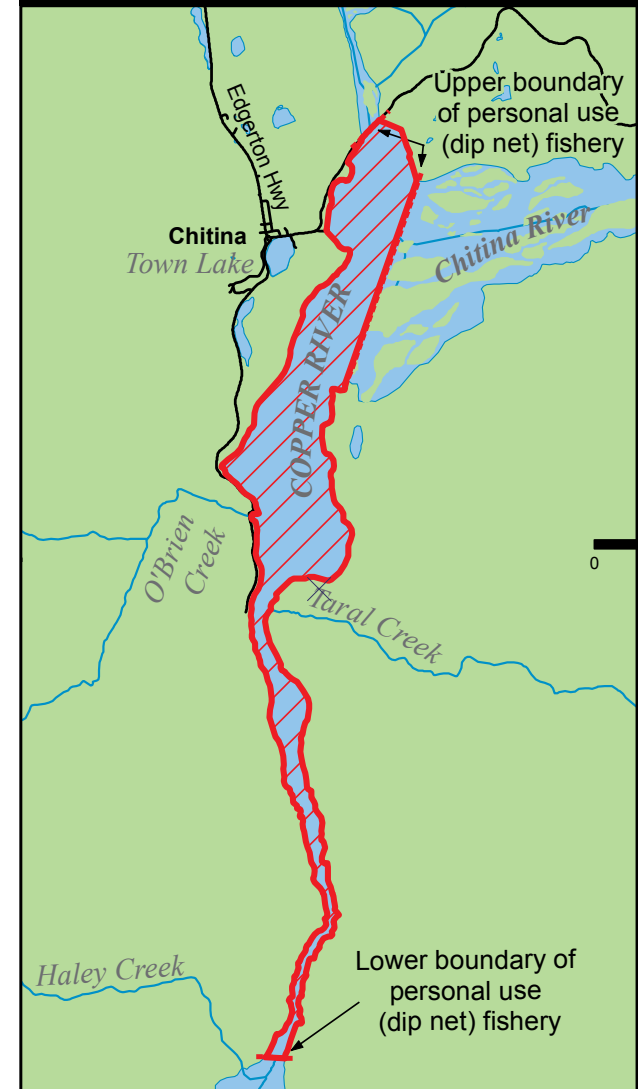
Most land in the Chitina area is privately owned by the Chitina Village Corporation or the Ahtna Regional Corporation. Please respect the rights of landowners in the area, and obey all regulatory signs concerning access, parking, and other subjects.

The *Regulation Summary & Access for the Chitina Subdistrict Personal Use Salmon Fishery* is available at your local ADF&G office and online on the Chitina pages at <http://fish.alaska.gov/PU>

The first open fishing period will occur between June 7 and June 15, depending upon strength and timing of the salmon run. Permits will be available at all locations no later than June 1.

- A permit is required and must be in your possession while taking or transporting fish. All salmon must be recorded on your permit **before** leaving the fishing site.
- Permits can be obtained online at [www.adfg.alaska.gov/store](http://www.adfg.alaska.gov/store), and at ADF&G offices in Anchorage, Fairbanks, Palmer, and Glennallen.
- Permits are also available at some private vendors, for a list see the Chitina pages at <http://fish.alaska.gov/PU> or call any of the ADF&G offices listed above.
- **Only one Chitina Subdistrict personal use salmon permit will be issued to a household per year.**
- **Permits are \$15.** Funds from permit sales are used to provide sanitation and trail maintenance at the fishery.
- The annual limit is 25 salmon for the head of household and 10 salmon for each dependent of the permit holder, per permit, per year.
- Only one (1) king salmon is allowed per permit per year, and it is included in the annual household limit.
- King salmon retention may be closed by emergency order at any time. Always check current regulations before harvesting a king salmon.
- Rainbow/steelhead trout may not be kept.
- **You must report for each permit by October 15th**, even if you did not fish or did not harvest any fish. **Reporting MUST be done ONLINE at: <http://fish.alaska.gov/PU>**. Failure to report ONLINE by the October 15th deadline will result in you being ineligible to receive a Chitina Subdistrict personal use salmon permit the following fishing season.

## Chitina Dip Net Fishery Boundaries





# SHELLFISH REGULATIONS



## North Slope, Northwestern and Kuskokwim-Goodnews Areas

### **Shellfish may be taken as follows:**

1. Shrimp may be taken with pots and ring nets.
2. Crab may only be taken with pots, ring nets, diving gear, dip nets, hooked or hookless lines either operated by hand or attached to a pole, or by hand.
3. Clams may only be taken with rakes, shovels, manually operated clam guns, or by hand.
4. No more than 5 pots per person, and a maximum of 10 pots per vessel, regardless of type, may be used to take shellfish at any time.
5. All sport anglers shall plainly and legibly inscribe their first initial, last name, and home address on a keg or buoy attached to each pot. A keg or buoy attached to a pot must also be inscribed with the name or the Division of Motor Vehicles registration number (AK number) of the vessel used to operate the pot.
6. Escape mechanisms, as described in 5 AAC 39.145, must be provided for each pot.
7. The bag and possession limits for shellfish are not in addition to those allowed under either subsistence fishing regulations, or under personal use fishing regulations.
8. No person may mutilate or otherwise disfigure any crab in any manner which prevents the determination that the crab is of legal size until the crab has been processed for human consumption. No person may take or possess shellfish smaller than the minimum legal size limits.
9. In the waters south of 60°N. lat., male king crab may be taken only from June 1 through January 1.

**Harvest record form:** A person must obtain a harvest record form from the ADF&G office in Nome prior to fishing for king crab in the Norton Sound section of the Northern District.

### ***Daily bag and Possession Limits:***

#### **RED KING CRAB**

- Males only—6 per day, 6 in possession—4¾ inches or more.

#### **BLUE KING CRAB**

- Males only—6 per day, 6 in possession, 5½ inches or more (5 inches or more in the Northwestern Area).

#### **DUNGNESS CRAB**

- Males only—12 per day, 12 in possession, 6½ inches or more.

#### **TANNER CRAB**

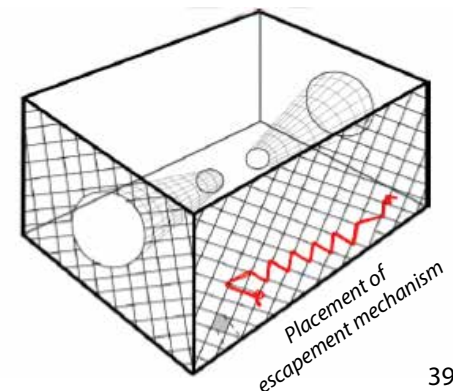
- Males only:
  - *C. bairdi*, 5½ inches or more
  - *C. opilio*, 3⅞ inches or more
  - 12 per day, 12 in possession (in combination).

### **Shellfish Pot Gear Escape Mechanisms**

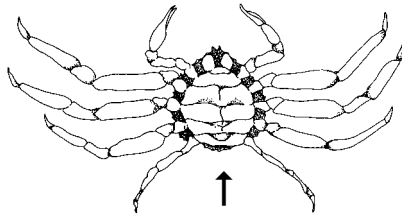
- Pot gear must include escape mechanisms in order to avoid waste of the resource in case the pot is lost.
- A sidewall, which may include the tunnel, must contain an opening at least 18 inches long (6 inches long for shrimp pots). The opening must be within 6 inches of the bottom of the pot, and must be parallel to the bottom of the pot.
- The opening must be laced, sewn, or secured together by a single length of untreated, 100 percent cotton twine no larger than 30-thread. The cotton twine may be knotted at each end only. The cotton twine may not be looped around or tied to the web bars.

An owner, operator, or employee of a lodge, charter vessel, or other enterprise that furnishes food, lodging, or sport fishing guide services may not furnish to a client or guest of that enterprise, subsistence-, sport-, or personal use-caught shellfish, unless the shellfish:

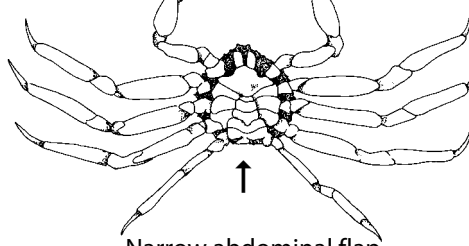
- 1) Has been taken with gear deployed and retrieved by the client or guest;
- 2) Has been taken with gear that has been marked with the client's or guest's name and address; and
- 3) Is to be consumed by the client or guest or is consumed in the presence of the client or guest. The captain and crew members of a charter vessel may not deploy, set, or retrieve their own gear in a subsistence, sport, or personal use fishery when that vessel is being chartered.



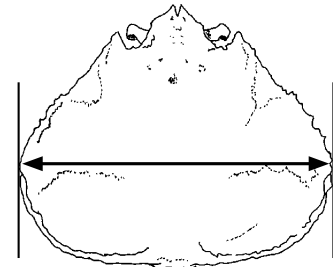
**TANNER CRAB** (*Chionoecetes bairdi* - minimum size 5½ inches / *Chionoecetes opilio* - minimum size 3⅛ inches)

**Female - NO HARVEST ALLOWED**


Wide abdominal flap covers most of underside (females usually smaller than 5½")

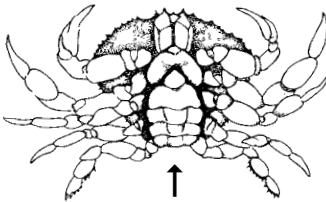
**Male**


Narrow abdominal flap

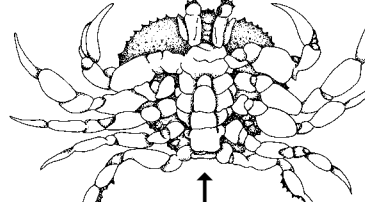


Width measurement of Tanner crab is the straight-line distance across the carapace, **including** spines.

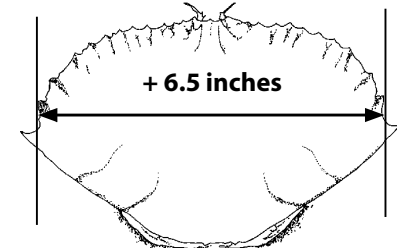
**DUNGENESS CRAB** (minimum size 6½ inches)

**Female - NO HARVEST ALLOWED**


Wide abdominal flap covers most of underside

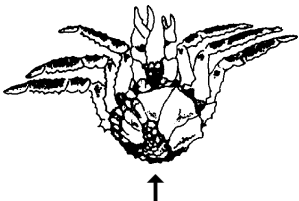
**Male**


Narrow abdominal flap

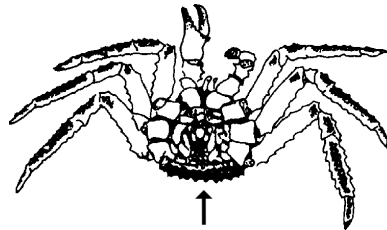


Width measurement of Dungeness crab is the straight-line distance across the carapace, **NOT** including spines.

**KING CRAB** (Red King - minimum size 4¾ inches / Blue King - minimum size 5½ inches; 5 inches Northwestern area)

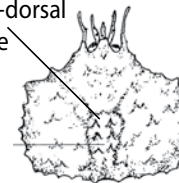
**Female - NO HARVEST ALLOWED**


Wide abdominal flap covers most of underside

**Male**


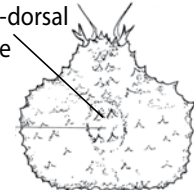
narrow abdominal flap

6 prominent spines on mid-dorsal plate



**RED KING CRAB**  
(minimum size 4¾ inches)

4 prominent spines on mid-dorsal plate



**BLUE KING CRAB**  
(minimum size 5½ inches;  
5 inches Northwestern Area)

# CRAB IDENTIFICATION AND MEASUREMENT



# NORTHERN ALASKA STOCKED WATERS

## Tanana River Drainage

<b>Alaska Highway</b>	RT	LS	AG	AC	LT
Craig Lake	*				*
Donna Lake <sup>a</sup>	*				
Forrest Lake <sup>a</sup>	*				
Four Mile Lake	*			*	
Hidden Lake	*				
Jan Lake	*	*			
Lisa Lake	*	*			
Little Donna Lake <sup>a</sup>	*				
Monte Lake <sup>a</sup>	*				
<b>Chena HS Road</b>	RT	LS	AG	AC	LT
Chena HS 25.0 Mi. Pit	*		*		
Chena HS 30.0 Mi. Pit	*		*		
Chena HS 45.5 Mi. Pit	*		*		
Chena HS 47.9 Mi. Pit	*		*		
Chena HS 56.0 Mi. Pit	*				
<b>Coal Mine Road</b>	RT	LS	AG	AC	LT
Backdown Lake	*			*	
Brodie Lake			*	*	
Coal Mine #5	*			*	*
Dick's Pond	*			*	
Ken's Pond	*			*	
Last Lake	*				
Paul's Pond	*		*		
Rangeview Lake			*	*	
<b>Denali Highway</b>	RT	LS	AG	AC	LT
Fourteen Mile Lake <sup>a</sup>	*				

<b>Eielson AFB</b>	RT	LS	AG	AC	LT
Grayling Lake	*		*	*	
Hidden Lake	*		*	*	
Horseshoe Lake	*				
Manchu Lake	*		*		
Mullins Pit	*		*		
<b>Elliott Highway</b>	RT	LS	AG	AC	LT
Olmes Pond	*		*		
<b>Fairbanks</b>	RT	LS	AG	AC	LT
Ballaine Lake	*		*		
Cushman Lake	*		*		
<b>Fort Wainwright</b>	RT	LS	AG	AC	LT
Lundgren Pond	*				
Monterey Lake	*				
Wainwright #6	*		*		
<b>Meadows Road</b>	RT	LS	AG	AC	LT
Bolio Lake	*		*		
Bullwinkle Lake	*				

**RT** – Rainbow Trout      **AC** – Arctic Char  
**LS** – Landlocked Salmon      **LT** – Lake Trout  
**AG** – Arctic Grayling

### Stocked waters bag and possession limits:

- For RT, LS, AG and AC: 10 in combination - only 1 of which may be over 18 inches.
- Lake trout limits: 2 per day, 2 in possession, no size limit.

Species listed have been recently stocked and are likely present in the lake. Refer to drainage or waterbody specific regulations for bag and possession limits for species not listed in these tables. Visit the Alaska Lake Database (ALDAT) by scanning the QR code for current fish releases near you.



<b>Meadows Road</b>	RT	LS	AG	AC	LT
Chet Lake	*		*	*	
Doc Lake	*				
Ghost Lake	*			*	
J Lake		*	*	*	
Mark Lake	*		*		
Nickel Lake	*			*	
North Twin Lake	*				*
Sheefish Lake			*	*	
South Twin Lake	*				
Weasel Lake	*				
<b>Nenana</b>	RT	LS	AG	AC	LT
Dune Lake <sup>a</sup>	*	*			
Geskakmina Lake <sup>a</sup>	*	*			
Nenana City Pond	*				
Triangle Lake <sup>a</sup>	*				
West Iksgiza Lake <sup>a</sup>	*				
<b>North Pole</b>	RT	LS	AG	AC	LT
Chena Lake	*		*	*	
Nordale #2	*		*		
North Chena Pond	*		*		
North Pole Pond	*		*		
Pyrite Pond	*				
Sirlin Dr Pond	*				
Weigh Station #1	*				
Weigh Station #2	*				
Z Pit	*		*		

<sup>a</sup> Lake is more than 2 miles from road system.



<b>Parks Highway</b>	RT	LS	AG	AC	LT
Parks Highway 285	*				
Otto Lake	*				
Parks Hwy 261	*				
<b>Richardson Hwy.</b>	RT	LS	AG	AC	LT
Big "D" Pond	*		*		
Birch Lake	*		*	*	
Bluff Cabin Lake <sup>a</sup>	*				
Donnelly Lake	*				
Johnson Pit #2	*		*		
Kenna Lake <sup>a</sup>	*				
Koole Lake <sup>a</sup>	*	*	*		
Little Harding Lake	*				
Little Lost Lake	*				
Lost Lake	*		*	*	
Mosquito Creek (Silver) Lake	*				
Quartz Lake	*	*		*	
Rapids Lake	*				*
Rich 28 Mile Pit	*		*		
Rich 31 Mile Pit	*		*		
Rich 81 Mile Pit	*		*		
Shaw Pond	*			*	
Stringer Rd Pond	*				
<b>Steese Highway</b>	RT	LS	AG	AC	LT
Steese Hwy 29.5	*		*		
Steese Hwy 31.6	*		*		
Steese Hwy 33.5	*		*		
Steese Hwy 34.6	*		*		
Steese Hwy 35.8	*		*		
Steese Hwy 36.6	*		*		

<b>Upper Copper and Upper Susitna River Drainages</b>					
<b>Chitina</b>	RT	LS	AG	AC	LT
Three Mile Lake	*		*		
Two Mile Lake	*			*	
<b>Glenn Highway</b>	RT	LS	AG	AC	LT
Arizona Lake			*		
Buffalo Lake	*			*	
DJ Lake	*				
Gergie Lake	*			*	
John Lake <sup>a</sup>				*	
Ryan Lake	*		*	*	
Tex Smith Lake	*			*	
Tolsona Lake	*				
Tolsona Mt. Lake <sup>a</sup>	*				
<b>Lake Louise Road</b>	RT	LS	AG	AC	LT
Connor Lake			*		
Crater Lake	*			*	
Junction Lake	*		*		
North Jans Lake <sup>a</sup>	*				
Old Road Lake	*				
Peanut Lake	*				
Round Lake	*				
South Jans Lake <sup>a</sup>	*	*			
<b>McCarthy Road</b>	RT	LS	AG	AC	LT
Sculpin Lake	*				
Silver Lake	*				
Strelina Lake	*	*			
<b>Richardson Hwy.</b>	RT	LS	AG	AC	LT
Dick Lake				*	
Pippin Lake	*		*		
Squirrel Creek Pit	*		*		

42

# Visit the Tanana Valley Fisheries Center

.....  
At the Ruth Burnett Sport Fish Hatchery

**Located at 1150 Wilbur St., Fairbanks, AK**

## Hours of Operation

..... June through August .....

Monday-Saturday: 8 a.m. to 4 p.m.

..... September through May .....

Monday-Friday: 9 a.m. to 4 p.m.

*Closed on Sunday*

[www.adfg.alaska.gov](http://www.adfg.alaska.gov)

## WHITEFISH



### HUMPBACK WHITEFISH

Silver-gray with greenish yellow back and fleshy, darker fins. Large scales, small inferior mouth, no teeth. Pronounced dorsal hump just behind gills.



### SHEEFISH (INCONNU)

The largest member of the whitefish family. Large jaws with the lower jaw extending beyond the upper. Silvery sides (no spots) and large, prominent, silvery scales. Tail is deeply forked.



### LEAST CISCO

Light silver, slender, herring-like body with small head and small, superior mouth. Gray to olive-green back.

### NORTHERN PIKE



Greenish back and sides with yellowish white irregular-shaped spots. Flattened head with alligator-like jaws containing many large, sharp teeth. Fins are tinged with orange.

## ARCTIC GRAYLING



Light copper to dark purple back fading to bluish gray, with black spots from just behind the gill plate to mid-body. Orange stripes on pelvic fins. Large, sail-like dorsal fin with red and aqua to violet spots—iridescent on large fish. Dorsal fin of mature male extends to or past the adipose fin; female dorsal fin is considerably shorter.



### RAINBOW TROUT

Green to bluish back with silvery to yellowish-green sides. Broad pinkish band along side and black spots on back, sides, and tail. Upper jaw usually does not extend past eye on adult.



### BURBOT

The only freshwater cod in North America. Slim, mottled brownish black body with smooth skin (scales are nearly microscopic). Elongated dorsal and anal fins run from mid-body to tail. Flattened head and wide mouth with many small teeth: a barbel (whisker-like extension) hangs from its lower jaw.

## CHAR



### DOLLY VARDEN CHAR

Bluish gray or silver background with light spots (usually smaller than its pupil). No spots on head or tail. Easily confused with Arctic char, but Dolly Varden occur mainly in rivers, have a more squared-off tail, a more elongated head (especially spawning males), and a wider tail base than Arctic char.

### ARCTIC CHAR



Brown to olive background with light spots (usually larger than its pupil); sides fade to a pale belly. Spawning colors are brilliant orange or gold, and underbody fins have bright white leading edges. Arctic char live in lakes; they have a shorter head than Dolly Varden. Their tail is slightly forked, but not as pronounced as a lake trout, and has a narrower base than the Dolly Varden's.



### LAKE TROUT

The lake trout is a char. It can be distinguished from other char by the many whitish-yellow spots covering its head, entire tail, back and sides. No other Alaskan char species has spots on face and tail. Lake trout also have deeply forked tails, unlike other char, and, although normally lake dwellers, they are sometimes found in northern Alaska rivers.



# PACIFIC SALMON MARINE PHASE IDENTIFICATION

44

Please note, when salmon enter fresh water they undergo significant physical changes including changes in coloration. This chart is intended to help anglers identify salmon by species. However, it is the angler's responsibility to be able to positively identify the species at any point in its life cycle.

## Chinook (king) Salmon



- Spots on back and both lobes of the tail
- Black mouth with a black gumline

## Coho (silver) Salmon



- Spots on back and upper lobe of the tail
- Black mouth with a white gumline

## Sockeye (red) Salmon



- No distinct spots on back or tail
- White mouth with a white gumline
- Large, bright gold eye

## Pink (humpy) Salmon



- Large, oval spots on back and both lobes of tail
- White mouth with a black gumline

## Chum (dog) Salmon



- No spots; calico bands on body (often faint in saltwater)
- White mouth with a white gumline



### Chinook (king) Salmon



- Spawning adults turn maroon or olive brown
- Spots on body and both lobes of the tail remain

### Coho (silver) Salmon



- Males develop pronounced "kype" (hooked-nose)
- Spots on back and upper lobe of the tail remain
- Male and female turn dark maroon and have dark backs

### Sockeye (red) Salmon



- Spawning adults develop dull-green heads
- Males develop hump on back
- Both female and male turn red

### Pink (humpy) Salmon



- Spawners turn dull gray on their backs and upper sides
- Lower sides appear cream color or white
- Large, oval spots on back and both lobes of tail remain

### Chum (dog) Salmon



- Spawners develop pronounced, vertical calico bands on sides
- Males exhibit large, canine-like teeth

Photographs by the Alaska Department of Fish and Game.

## PACIFIC SALMON SPAWNING PHASE IDENTIFICATION

# Angler Recognition Programs

## Trophy Fish Program

The Trophy Fish Program gives special recognition to anglers taking fish that meet minimum weight (trophy certificates) or length standards (catch-and-release certificates) within a species. Trophy fish for both certificates must be legally caught from waters open to the public, in compliance with current ADF&G sport fishing regulations. *There is now a category for Youth anglers.*



Photo courtesy of Chris Cox.

## Five Salmon Family Challenge



The Five Salmon Family certificate program provides recognition to angling families who catch and document the five species of Pacific salmon commonly found in Alaska. Certification in the program requires all salmon must be legally caught in Alaskan waters (fresh or salt water) open to the public and in compliance with current ADF&G sport fishing regulations.

## Stocked Waters Challenge

The Stocked Waters Challenge program awards a certificate of recognition to individuals or groups who successfully complete one or more angling challenges at stocked waters.



# wefishak

Visit our website to find out more!

[www.wefishak.alaska.gov](http://www.wefishak.alaska.gov)

## Alaska Trophy Fish Record Holders

Species	Min. wt.	Lbs/oz	Year	Location	Angler
Arctic char/ Dolly Varden	10 lb	27/6	2002	Wulik River	Mike Curtiss
Brook trout	3 lb	3/4	2012	Green Lake	Kyle Kitka
Burbot	8 lb	24/12	1976	Lake Louise	George R. Howard
King salmon	(see below)	97/4	1985	Kenai River	Lester Anderson
Chum salmon	15 lb	32/0	1985	Caamano Point	Fredrick Thynes
Coho salmon	20 lb	26/11	1976	Icy Strait	Andrew Robbins
Cutthroat trout	3 lb	8/6	1977	Wilson Lake	Robert Denison
Grayling	3 lb	5/1	2008	Fish River	Peter Cockwill
Halibut	250 lb	459/0	1996	Unalaska Bay	Jack Tragis
Lake trout	20 lb	47/0	1970	Clarence Lake	Daniel Thorsness
Lingcod	55 lb	82/9	2007	Gulf of Alaska	Robert Hammond
Northern pike	15 lb	38/8	1991	Innoko River	Jack Wagner
Pink salmon	8 lb	13/7	2016	Kenai River	Robert Dubar
Rainbow/ steelhead trout	15 lb	42/3	1970	Bell Island	David White
Rockfish	18 lb	39/1	2013	Sitka	Henry Liebman
Sheefish	30 lb	53/0	1987	Pah River	Lawrence E. Hudnall
Sockeye salmon	12 lb	16/0	1974	Kenai River	Chuck Leach
Whitefish	4 lb	9/0	1989	Tozitna River	Al Mathews

King salmon minimum weight for the Kenai River is 75 lb. For the rest of the state, it is 50 lb.

Minimum weights for trophy fish certificates are listed on the table above (second column). Entries must be weighed in the presence of witnesses and a Trophy Fish Official, on a scale currently certified by the Division of Weights and Measures.

**For catch-and-release certificates, do not remove your fish from the water.** Hold it just at the water's surface while a photograph is quickly taken, then release it into the current.

### Minimum lengths for catch-and-release honorary certificates:

- Arctic char/Dolly Varden—30 inches
- Arctic grayling—18 inches
- Brook trout—20 inches
- Burbot—32 inches
- Cutthroat trout—20 inches
- Lake trout—36 inches
- Lingcod—53 inches
- Northern pike—40 inches
- Rainbow/steelhead—32 inches
- Sheefish—36 inches



**We've added a Youth Category to our Trophy Fish Program!**  
Check out details at [www.wefishak.alaska.gov](http://www.wefishak.alaska.gov)

5 AAC 75.010(a) states that no person may possess any unpreserved fish not legally taken by himself or herself, unless he or she has a statement signed by the person taking the fish stating the type of fish, number of fish, the location and date taken, and the sport fishing license number. See page 7, "Possession of sport-caught fish."



Alaska Department of Fish and Game  
Division of Sport Fish

## TRANSFER OF POSSESSION FORM

**Anglers must fill out this form and give to recipient, along with fish or shellfish.  
Recipient must carry this form until fish or shellfish are preserved.**

### ANGLER INFORMATION

Name: \_\_\_\_\_ Sport fishing  
license no. \_\_\_\_\_

Address: \_\_\_\_\_

City

State

Zip

SPECIES TAKEN	NUMBER TAKEN	DATE TAKEN	LOCATION

Angler's  
signature: \_\_\_\_\_ Date: \_\_\_\_\_

### RECIPIENT INFORMATION

Name: \_\_\_\_\_

Address: \_\_\_\_\_

City

State

Zip

Recipient's  
signature: \_\_\_\_\_ Date: \_\_\_\_\_

## Sport Fishing by Proxy

Alaska residents may proxy sport fish, proxy personal use fish, and/or proxy subsistence fish for another Alaska resident who is:

- (1) 70% or greater physically disabled (physician's affidavit required);
- (2) 65 years or older;
- (3) Legally blind (physician's affidavit required); or
- (4) Developmentally disabled (physician's affidavit required).

*No person may give or receive payment to be a beneficiary or a proxy.*

### To obtain a "Proxy Information Form":

Go to any Alaska Department of Fish and Game office, or visit:

<http://www.adfg.alaska.gov/index.cfm?adfg=personaluseproxyfishing.main>

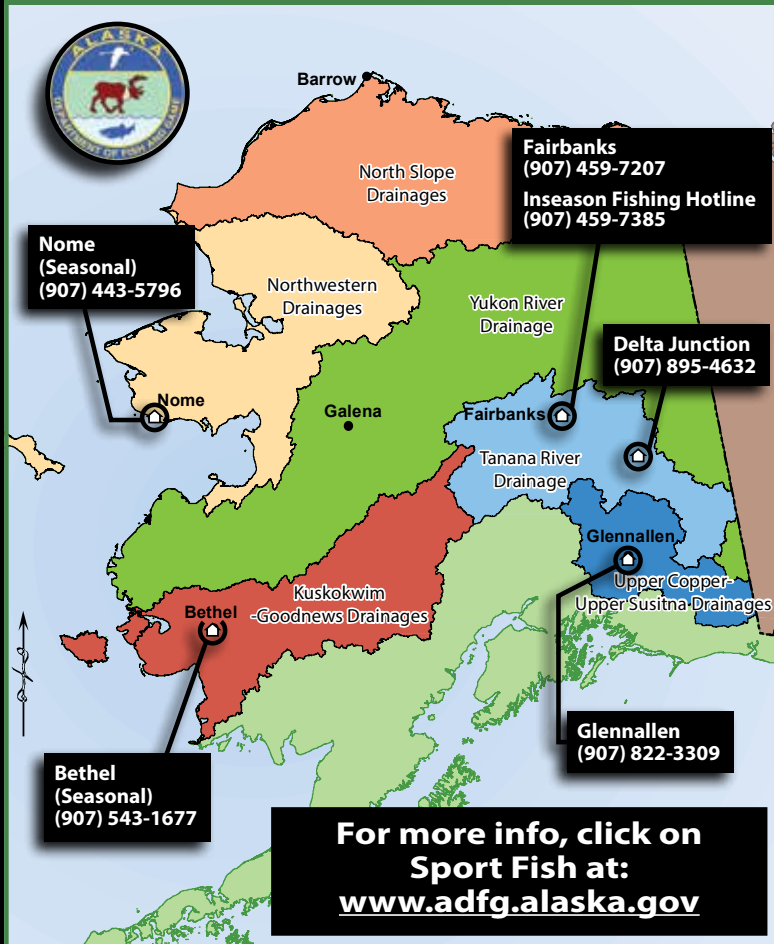
### Once the form has been completed by both parties:

Bring it to an ADF&G office for certification. You must provide: (1) your sport fishing license number, or ADF&G PID/DAV card number, (2) original signatures of both parties, (3) beneficiary's proof of fishing license or ADF&G PID/DAV card; and, if the reason for the proxy is "legally blind" or "developmentally disabled", a physician's affidavit, or if "physically disabled," proof of 70% or greater physical disability.

The Proxy is valid from date of ADF&G certification for the time period shown through the end of the current calendar year. The proxy fishing program allows you to take your own bag limit and one beneficiary's bag limit in the same day. You may not take more than 2 bag and possession limits during any fishing trip, and you may not fish with more than one legal limit of gear. **The beneficiary may not take or attempt to take fish or shellfish at the same time as his/her proxy.** When proxy fishing, you must carry the ADF&G-certified Proxy form, your fishing license or ADF&G PID card, the original fishing license or ADF&G PID card of your beneficiary, and any original permits and harvest record cards (if necessary) for yourself and for your beneficiary. You may not have more than one Proxy in your possession while fishing, and you must deliver the fish and return all licenses, permits, and records to that beneficiary before you proxy fish for another beneficiary.

**Proxy fishing for halibut is not allowed.**

## Alaska Department of Fish & Game Northern Alaska Sport Fish Offices



The Alaska Department of Fish and Game (ADF&G) administers all programs and activities free from discrimination based on race, color, national origin, age, sex, religion, marital status, pregnancy, parenthood, or disability. The department administers all programs and activities in compliance with Title VI of the Civil Rights Act of 1964, Section 504 of the Rehabilitation Act of 1973, Title II of the Americans with Disabilities Act of 1990, the Age Discrimination Act of 1975, and Title IX of the Education Amendments of 1972. If you believe you have been discriminated against in any program, activity, or facility, please write: ADF&G ADA Coordinator, P.O. Box 115526, Juneau, AK 99811-5526; U.S. Fish and Wildlife Service, 4401 N. Fairfax Drive, MS2042, Arlington, VA 22203; Office of Equal Opportunity, U.S. Department of the Interior, 1849 C Street NW, MS 5230, Washington, DC 20240. The department's ADA Coordinator can be reached via phone at the following numbers: (VOICE) 907-465-6077, (Statewide Telecommunication Device for the Deaf) 1-800-478-3648, (Juneau TDD) 907-465-3646, or (FAX) 907-465-6078. For information on alternative formats and questions on this publication, please contact the following: ADF&G, Sport Fish Division, Research and Technical Services, Anchorage, AK 99518, 907-267-2382.

### A Message From the Commissioner



Alaska is blessed with bountiful fishery resources, from salmon and trout, to halibut and rockfish, to grayling and burbot. These resources provide Alaskans an opportunity to feed their families and fill their freezers, or simply to get out and fish as a way to reduce the stress of their everyday lives. And they provide visitors to our state "trips of their lives."

Over the past year we have endured some very difficult and challenging times. The worldwide COVID-19 pandemic has had significant impacts on our daily routines and personal behaviors. We understand the pandemic caused some to put a halt to travel plans and some were not able to make a trip to Alaska in 2020 to enjoy the natural beauty and exceptional resources this great state has to offer. We do hope to see you in 2021! As we look forward to what this year has to offer, we are hopeful to see positive shift toward a "new normal" and to share new experiences on the water with family and friends.

If you're holding this book, or reading it on an electronic device, you clearly are one of the hundreds of thousands of people who go fishing in Alaska each year. We thank you for that! When you purchase a fishing license or king stamp, those dollars go directly toward funding fisheries resource conservation, management, research, and enhancement efforts in Alaska. When you purchase fishing equipment or boat fuel, a portion of those excise tax dollars go into a federal fund designed to distribute monetary resources back to states. These funds, distributed annually, are used for resource management and conservation. Your participation as an angler in Alaska helps the Alaska Department of Fish and Game to maintain and improve the state's fisheries. Again, thank you!

We encourage you to get out and go fishing as a fun and healthy way to spend time with family and friends. Alaska's fish belong to the people. Our fisheries managers and division staff take this responsibility quite seriously.

We're all in this together. We are stronger together. And as anglers, we are unified under a common goal – to get out and fish and to conserve those opportunities for our future generations. With that in mind, please consider taking someone fishing who has never been. If you're active on social media, please share your photos using #wefishak. Let's work together to ensure Alaska's pristine sport fisheries can be enjoyed by everyone now and in the future.

**Doug Vincent-Lang**  
Commissioner, Alaska Department of Fish and Game

### A Message From the Director



Some of the memories I cherish the most are of times spent fishing with my family and friends. I grew up in Minnesota and spent summers and winters chasing all kinds of fish. I've always loved to fish! I joined the Military in 1972, with the guarantee of Alaska as my duty station, once I stepped off that plane, I never looked back. In 1980, I began working for the Alaska Department of Fish and Game as a volunteer and have been lucky enough to remain with ADF&G for 41 years. I've seen a lot of changes during my time, but one thing that hasn't changed is the fact that people just love to get out and go fishing in Alaska.

2020 was a challenging year for everyone. I was one of the millions of people who contracted COVID-19. It was tough. Really tough. But thankfully I'm much better now and ready to get out and go some fishing in 2021. With over 3,000 rivers, over 3 million lakes, and more than 6,000 miles of coastline, I've got plenty of options and it's not hard to practice social distancing with that amount of water to explore!

Maybe you practice catch-and-release fishing, maybe you're one of the many who fish to fill your freezer, or maybe you are considering trying your hand at fishing for the very first time. Either way, fishing is fun and it's about the best outdoor activity you can do in the time of COVID-19. Here's hoping that 2021 is a great year of fishing for you and your family and friends!

If you have questions about fishing or our diverse fisheries in Alaska, please don't hesitate to contact one of our offices. We are here to help you.

Good luck!

**Dave Rutz**  
Director, Alaska Department of Fish and Game –  
Division of Sport Fish



This publication was released by Alaska Department of Fish and Game at a cost of \$0.22 per copy to provide fishing regulations to the public and printed in Anchorage, Alaska.